

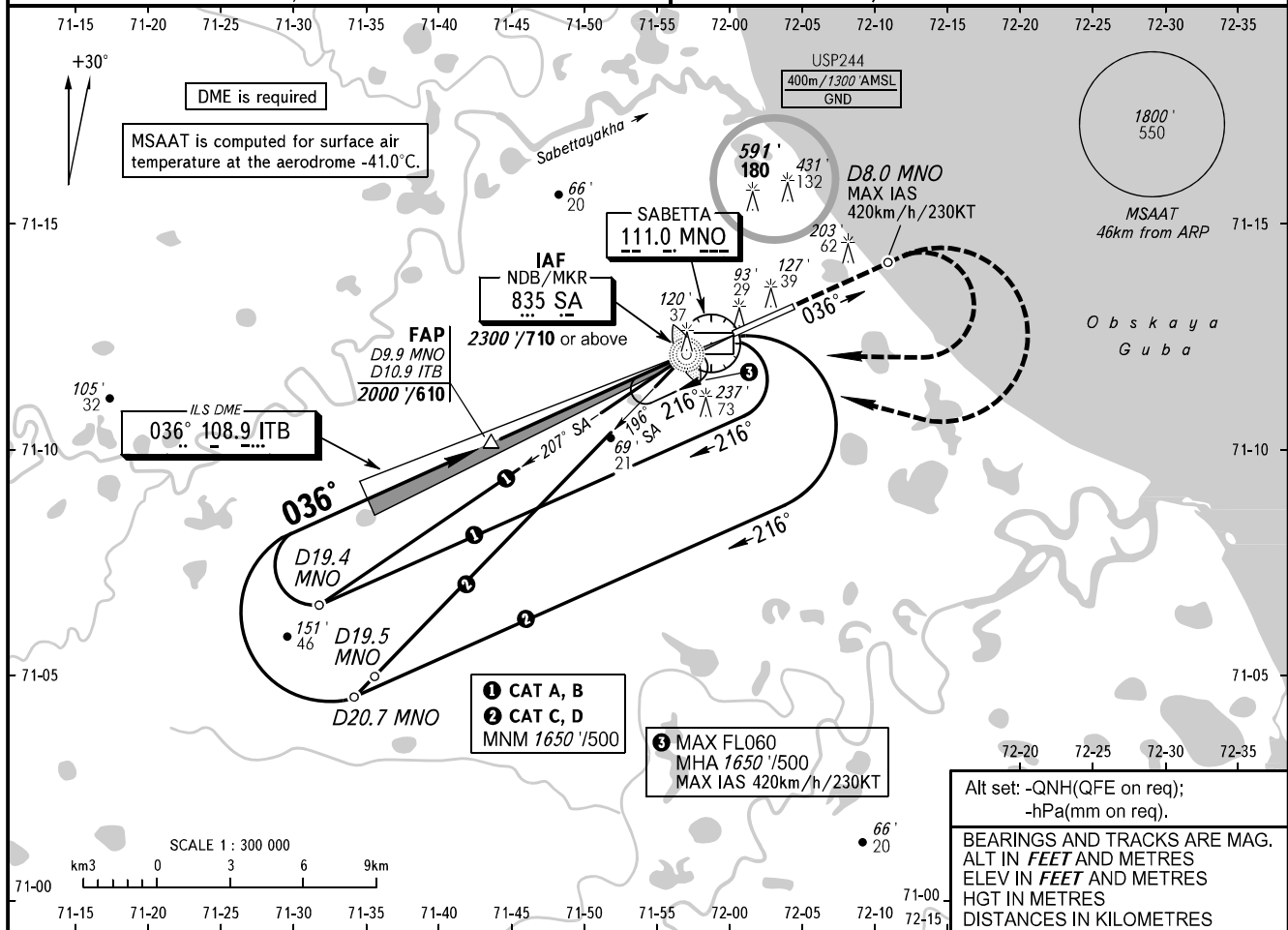
**INSTRUMENT  
APPROACH  
CHART - ICAO**

SABETTA INFORMATION **134.500**

**SABETTA, RUSSIA**  
SABETTA  
ILS W RWY 04

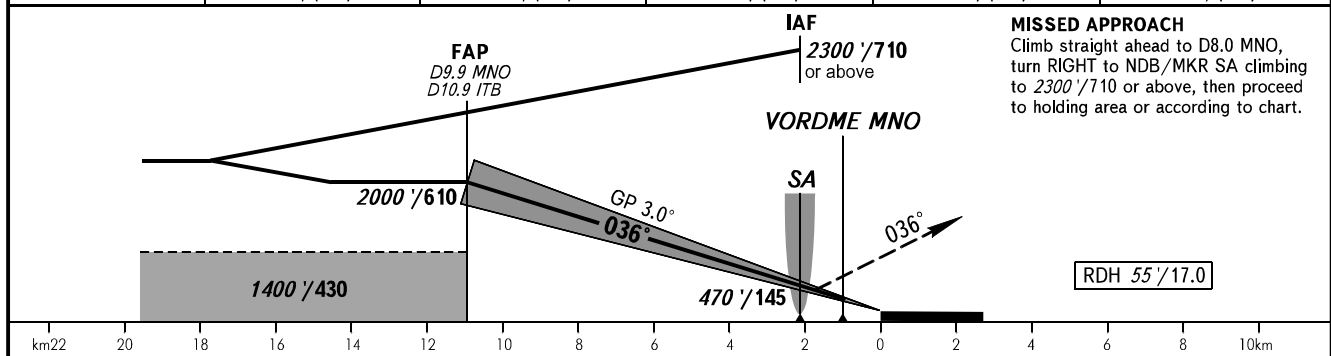
TRANSITION LEVEL: by ATC  
TRANSITION ALT: 5000' / 1500

AD ELEV: 46' / 14m  
THR ELEV: 45' / 14.0m



Alt set: -QNH(QFE on req);  
-hPa(mm on req).  
BEARINGS AND TRACKS ARE MAG.  
ALT IN FEET AND METRES  
ELEV IN FEET AND METRES  
HGT IN METRES  
DISTANCES IN KILOMETRES

DIST to RWY 04 THR	10.0	8.0	6.0	4.0	2.0
DME MNO	9.0	7.0	5.0	3.0	1.0
ALTITUDE/HEIGHT	1820' / (1770')	1480' / (1430')	1130' / (1080')	790' / (740')	450' / (400')
	555 / (540)	450 / (435)	345 / (330)	240 / (225)	135 / (120)



OCA(H)	A	B	C	D	<b>WARNING</b> Zero range of DME ITB is indicated at RWY 04 THR.							
Straight-in Approach	223' (178')	235' (190')	244' (198')	254' (209')								
	68 (55)	72 (58)	75 (61)	78 (64)								
Circling	510' (460')	540' (490')	640' (590')	640' (590')								
	155 (140)	165 (150)	195 (180)	195 (180)								
GROUND SPEED	km/h	150	180	210	240	270	300	330	360	390	420	450
	kt	81	97	113	130	146	162	178	194	211	227	243
RATE OF DESCENT	m/s	2.2	2.6	3.0	3.5	3.9	4.3	4.8	5.2	5.6	6.1	6.5
	ft/min	427	512	597	682	768	853	938	1024	1109	1194	1365

CHANGE: TA; Circling, table showing altitudes/heights