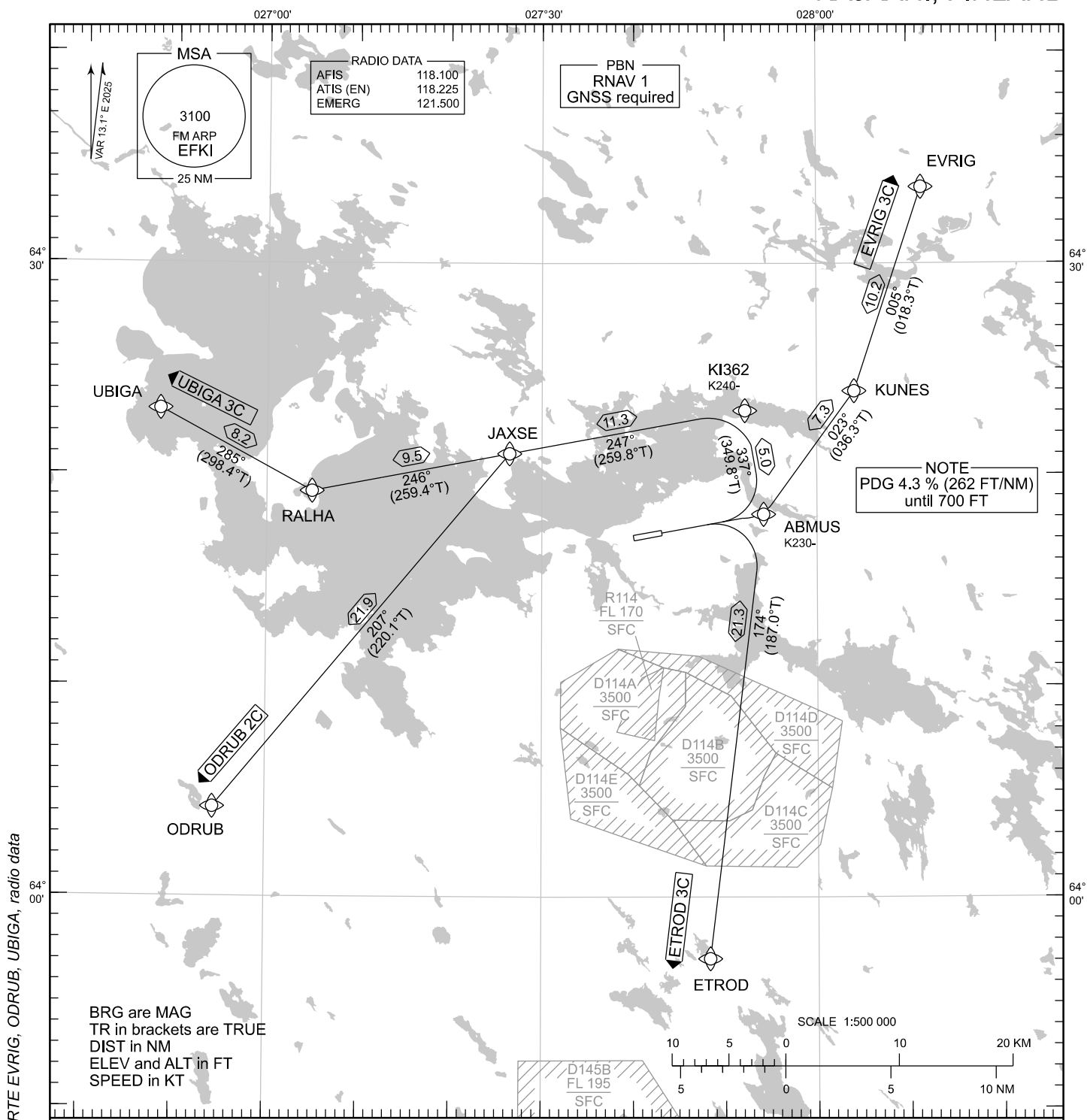


STANDARD DEPARTURE CHART
INSTRUMENT (SID) - ICAO

TRANSITION ALT
5000

RNAV SID RWY 07
KAJAANI AERODROME
KAJAANI, FINLAND



CHG: MAG VAR, PDG, RTE EVRIG, ODRUB, UBIGA, radio data

BRG are MAG
TR in brackets are TRUE
DIST in NM
ELEV and ALT in FT
SPEED in KT

RNAV SID RWY 07

ETROD 3C EVRIG 3C ODRUB 2C UBIGA 3C

DME/DME OPS: NOT SUPPORTED

ROUTES: RNAV PROC CODING ON THE VERSO OF THE CHART

SQUAWK: WHEN LINING UP SQUAWK THE ASSIGNED CODE

INITIAL CLIMB: MNM TURNING ALTITUDE ACCORDING TO RTE CODING.
PDG 4.3 % (262 FT/NM) UNTIL 700 FT.
CLOSE-IN OBSTACLES EXIST, SEE EFKI AD 2.10 - 5

NOISE ABATEMENT: AFTER TAKE-OFF CLIMB AS RAPIDLY AS PRACTICABLE TO AT LEAST 2000 FT ABOVE AD ELEV
PUBLISHED SID ROUTES ARE ALSO MINIMUM NOISE ROUTINGS

AREA MNM ALT: SEE AMA INDEX, AIP ENR 6.1 - 3

EFKI RNAV SID RWY 07										
RTE NAV SPEC	SEQ NR	P/T	WPT		MAG	GEO TR	DIST NM	Turn Direction	Constraints	
			ID	Flyover					LVL	Speed
ETROD 3C RNAV 1	010	CA	-	-	067°	080.1°T	-		A1040+	
	020	DF	ABMUS	-	-	-	-			K230-
	030	TF	ETROD	-	174°	187.0°T	21.3			
EVRIG 3C RNAV 1	010	CA	-	-	067°	080.1°T	-		A1040+	
	020	DF	ABMUS	-	-	-	-			K230-
	030	TF	KUNES	-	023°	036.3°T	7.3			
	040	TF	EVRIG	-	005°	018.3°T	10.2			
ODRUB 2C RNAV 1	010	CA	-	-	067°	080.1°T	-		A1040+	
	020	DF	ABMUS	-	-	-	-			K230-
	030	TF	KI362	-	337°	349.8°T	5.0	L		K240-
	040	TF	JAXSE	-	247°	259.8°T	11.3	L		
	050	TF	ODRUB	-	207°	220.1°T	21.9			
UBIGA 3C RNAV 1	010	CA	-	-	067°	080.1°T	-		A1040+	
	020	DF	ABMUS	-	-	-	-			K230-
	030	TF	KI362	-	337°	349.8°T	5.0	L		K240-
	040	TF	JAXSE	-	247°	259.8°T	11.3			
	050	TF	RALHA	-	246°	259.4°T	9.5	R		
	060	TF	UBIGA	-	285°	298.4°T	8.2			

WPT COORD
SEE PAGE EFKI AD 2.15 - 1