

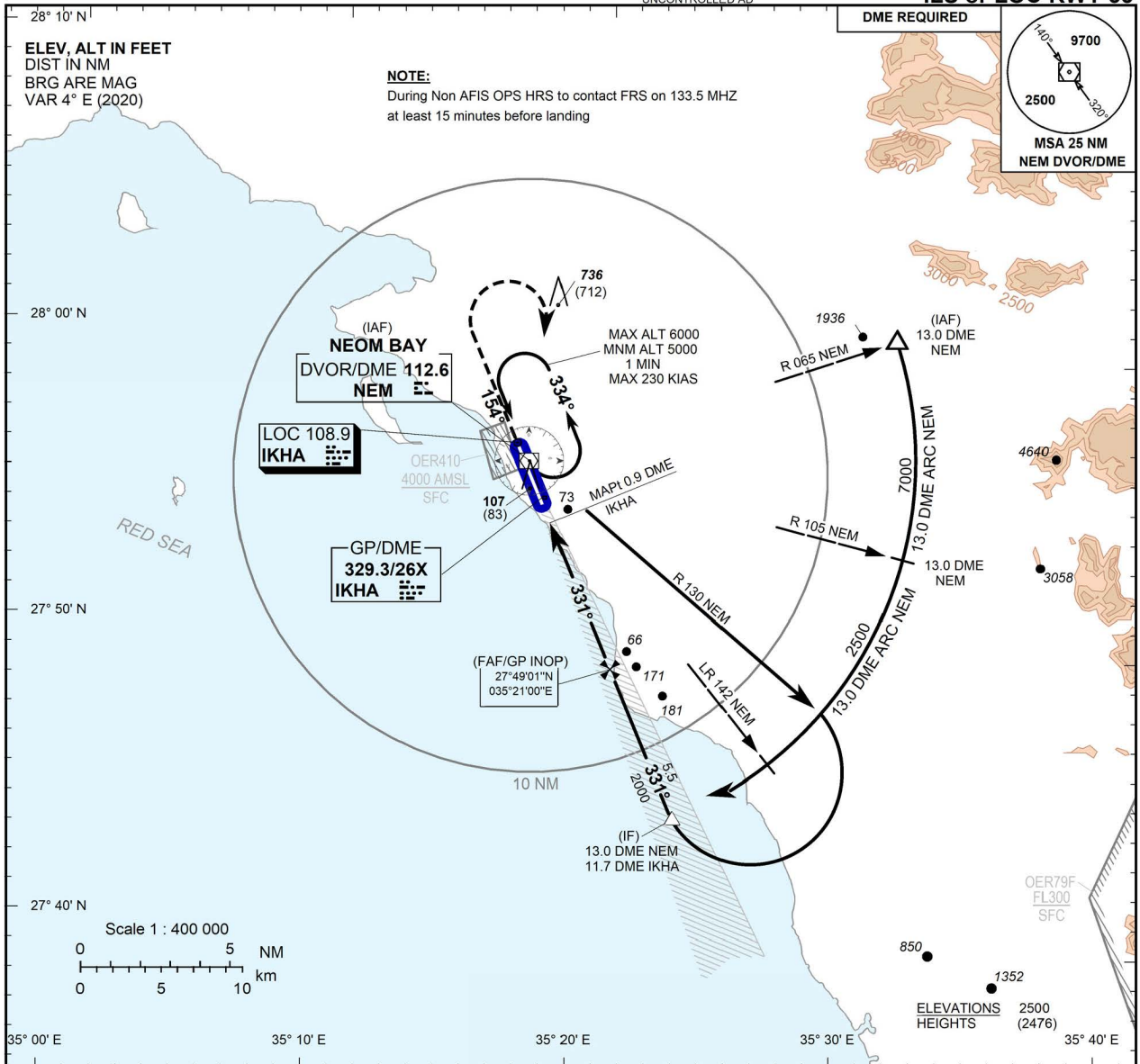
**INSTRUMENT  
APPROACH  
CHART - ICAO**

**AERODROME ELEV 32 FT  
HEIGHTS RELATED TO  
THR RWY 33 - ELEV 24 FT**

AFIS (TWR) 118.15 121.5  
245.9 243.0  
AFIS (GND) 121.775  
TIBA 122.8  
FRS 133.5  
UNCONTROLLED AD

**Neom Bay (OENN)**

**ILS or LOC RWY 33**



**TRANSITION ALT 13000  
TRANSITION LEVEL FL150**

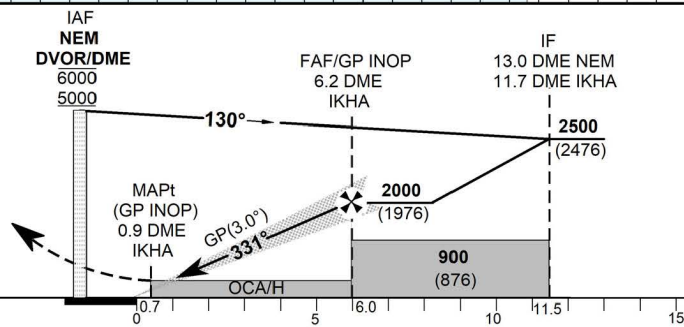
**MISSED APPROACH**

Climb straight ahead to **5000 FT**  
passing **1000 FT** turn right  
direct to **NEM DVOR/DME**  
to **5000 FT** and hold.  
No turn before MAPt.

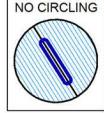
**ILS RDH 52**

**THR ELEV 24**

NM to/from **THR RWY 33**



		ACFT CAT	A	B	C	D									
Straight-in Approach	CAT I	OCA(H)	224 (200)				GND SPEED	Knots	70	90	110	130	150	170	190
		RVR(m)	750					min:s	4:34	3:33	2:54	2:28	2:08	1:53	1:41
	GP INOP	OCA(H)	320 (296)				Rate of Descent	ft/min	371	478	584	690	796	902	1008
		RVR(m)	750												
Circling	OCA(H)	N/A				DME IKHA NM	6	5	4	3	2	1			
	VIS(m)	N/A				ALT (HGT) 3.0° APCH	1932 (1908)	1614 (1590)	1295 (1271)	977 (953)	658 (634)	340 (316)			



CIRCLING NOT AUTHORIZED

CHANGE: AD ELEV Revised

AMDT: Original, 15 AUG 19

ICAO PANS OPS