

STANDARD DEPARTURE CHART-INSTRUMENT

VAR 2.8° W

ATIS 126.65
TWR 118.35(130.0)

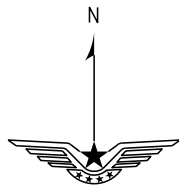
ZLIC YINCHUAN/Hedong

RNAV RWY 21

BEARINGS ARE MAGNETIC
ALTITUDES, ELEVATIONS
AND HEIGHTS IN METERS
DME DISTANCES IN
NAUTICAL MILES
DISTANCES IN KM

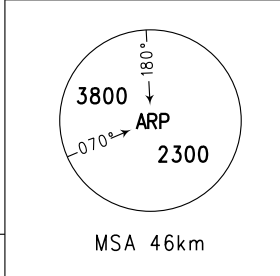
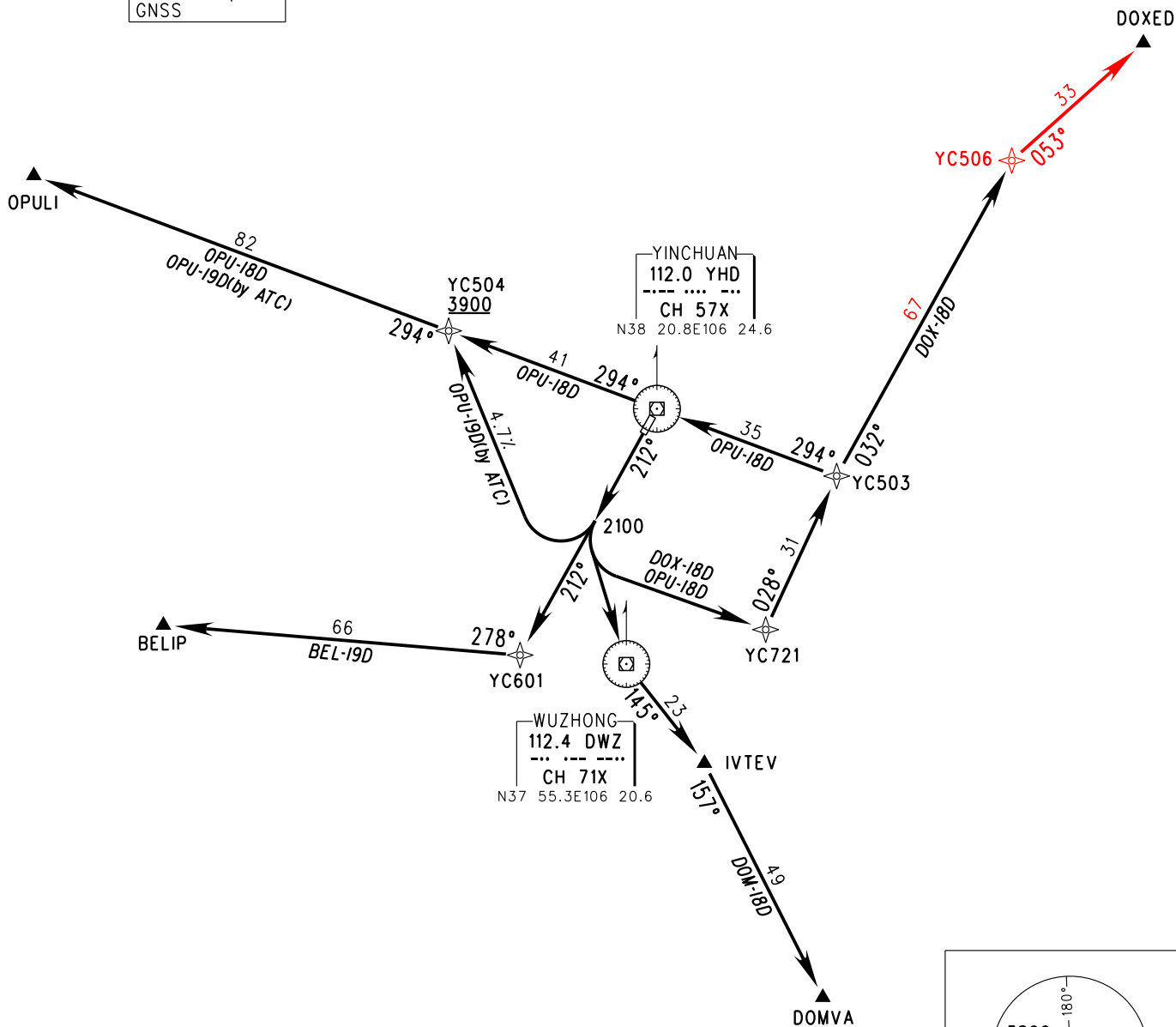
TL 3600
TA 3000
3300 (QNH ≥ 1031hPa)
2700 (QNH ≤ 979hPa)

APP01 124.05(119.1)
APP02 125.6(119.1)
APP03 126.075(119.1)
APP04 119.4(119.1)



NOT TO SCALE

RNAV1
RADAR required
GNSS



Changes: YC506.