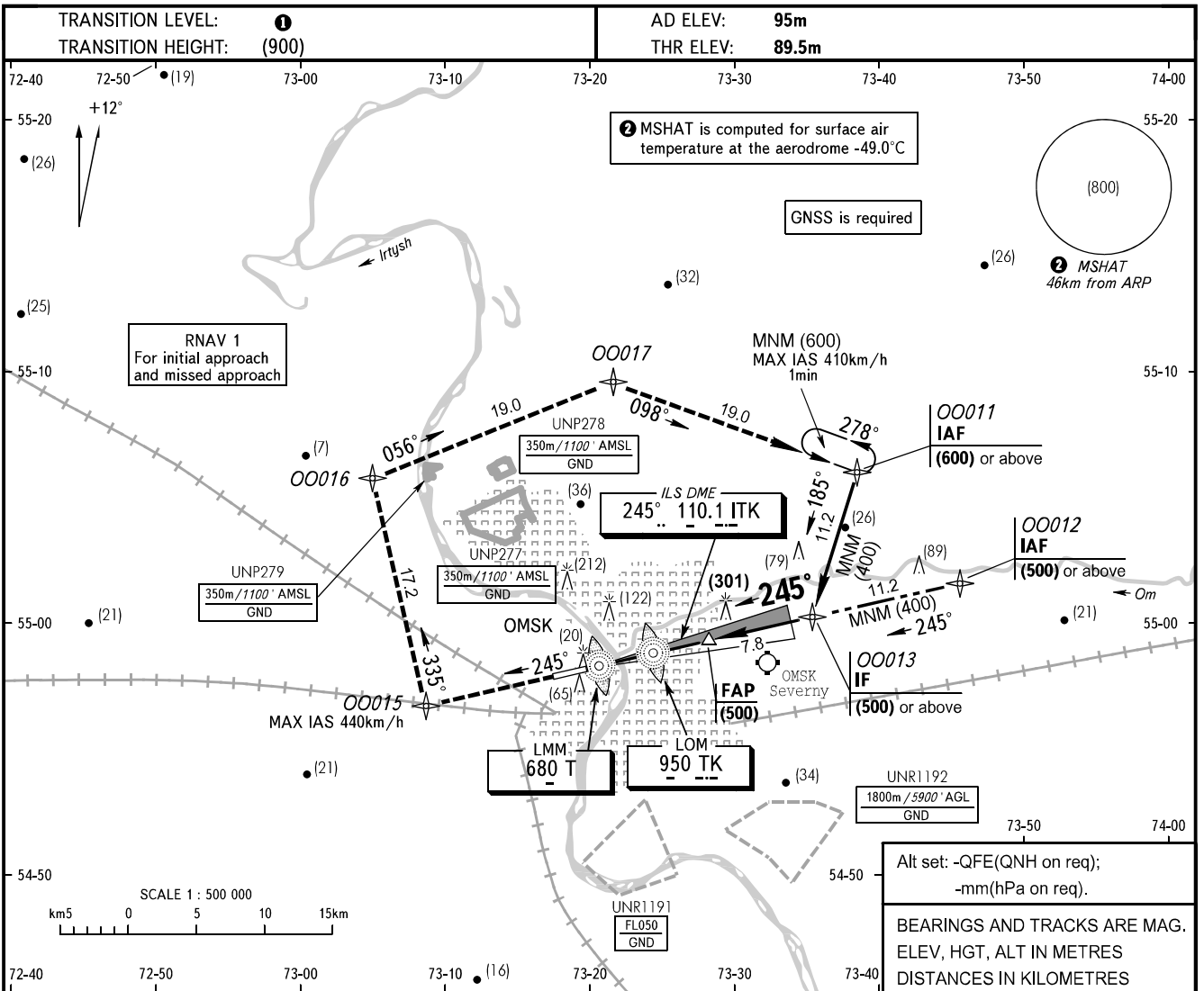


**INSTRUMENT
APPROACH
CHART - ICAO**

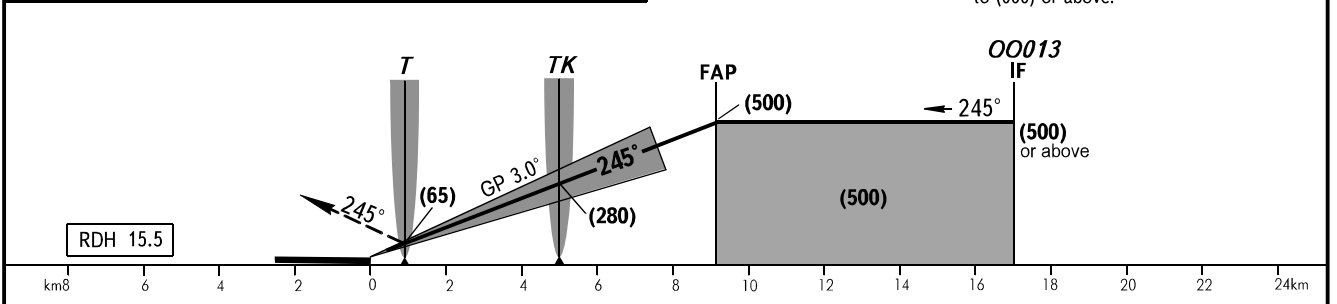
RADAR **119.000**
START **119.000**

OMSK, RUSSIA
TSENTRALNY
ILS Z RWY 25



DIST to THR RWY 25	2.0	4.0	6.0	8.0
HEIGHT	(120)	(225)	(330)	(435)

MISSED APPROACH
Climb straight ahead to OO015, turn RIGHT to OO016, then to OO017, OO011 climbing to (600) or above.



OCA(H)		A	B	C	D
Straight-in	CAT I	149 (59)	152 (62)	155 (65)	158 (68)
	Approach				
Circling		245 (150)	305 (210)	425 (330)	425 (330)

① **TRANSITION LEVEL:**
- FL050 when QFE is 733mm mercury column or above;
- FL060 when QFE is less than 733mm mercury column.

WARNING:

- Turbulence with down-draughts may be experienced on final approach segment.
- Nesting and migration of birds are observed between LMM T and LOM TK in warm season.
- ILS DME ITK reads zero at THR RWY 25.

GROUND SPEED	km/h	150	180	210	240	270	300	330	360	390
RATE OF DESCENT	m/s	2.2	2.6	3.1	3.5	3.9	4.4	4.8	5.2	5.7

CHANGE: New chart