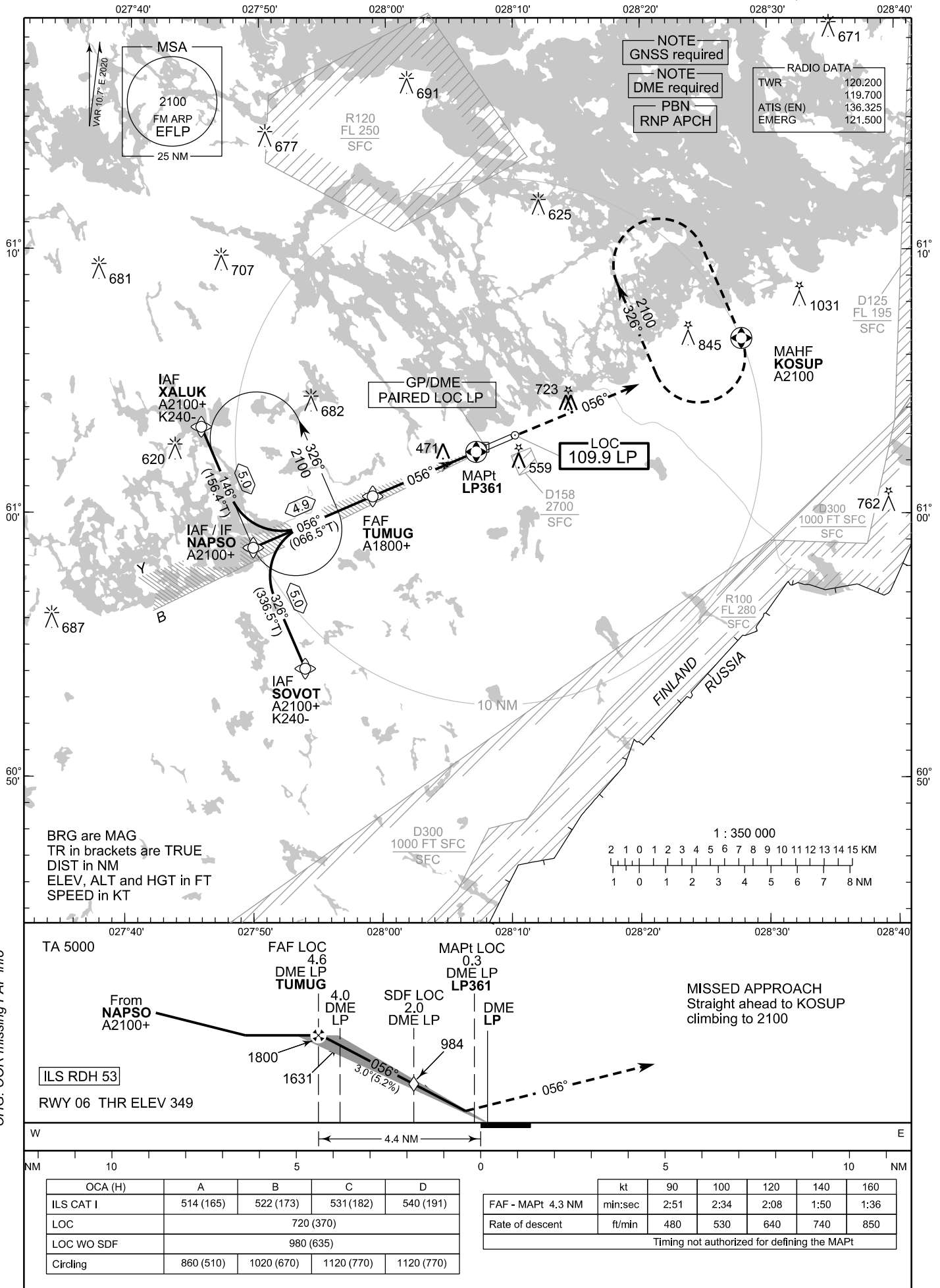


**INSTRUMENT  
APPROACH CHART - ICAO**

ELEV 349 FT  
HEIGHTS RELATED TO  
THR RWY 06 ELEV 349 FT

**ILS or LOC RWY 06  
LAPPEENRANTA AERODROME  
LAPPEENRANTA, FINLAND**



EFLP ILS or LOC RWY 06										
PROC ID NAV SPEC	SEQ NR	P/T	WPT			MAG	GEO TR	DIST NM	Constraints	
			ID	Type	Flyover				LVL	Speed
I06 XALUK RNP APCH	005	IF	XALUK	IAF	-	146°	156.4°T	5.0	A2100+	K240-
	010	TF	NAPSO	IF	-				056°	066.5°T
	020	TF	TUMUG	FAF LOC	-					
	030	TF	LP361	MAPt LOC	Y	056°	066.7°T	-		
	040	CA	-	-	-				A800+	
	050	DF	KOSUP	MAHF	Y	-	-	-	A2100	

EFLP ILS or LOC RWY 06										
PROC ID NAV SPEC	SEQ NR	P/T	WPT			MAG	GEO TR	DIST NM	Constraints	
			ID	Type	Flyover				LVL	Speed
I06 NAPSO RNP APCH	010	IF	NAPSO	IAF/IF	-	056°	066.5°T	4.9	A2100+	
	020	TF	TUMUG	FAF LOC	-					
	030	TF	LP361	MAPt LOC	Y	056°	066.7°T	-		
	040	CA	-	-	-				A800+	
	050	DF	KOSUP	MAHF	Y	-	-	-	A2100	

EFLP ILS or LOC RWY 06										
PROC ID NAV SPEC	SEQ NR	P/T	WPT			MAG	GEO TR	DIST NM	Constraints	
			ID	Type	Flyover				LVL	Speed
I06 SOVOT RNP APCH	005	IF	SOVOT	IAF	-	326°	336.5°T	5.0	A2100+	K240-
	010	TF	NAPSO	IF	-				056°	066.5°T
	020	TF	TUMUG	FAF LOC	-					
	030	TF	LP361	MAPt LOC	Y	056°	066.7°T	-		
	040	CA	-	-	-				A800+	
	050	DF	KOSUP	MAHF	Y	-	-	-	A2100	

RNAV Holdings							
ID	INBD TR	INBD MAG	Turn Direction	Speed	MNM HLDG LVL	TIME	DIST NM
NAPSO	156.4°T	146°	Left	K230-	A2100	1 MIN	-
KOSUP	157.0°T	146°	Right	K230-	A2100	1 MIN	-

WPT COORD
SEE PAGE EFLP AD 2.15 - 1

FINAL APPROACH PARAMETERS			
LOC Gradient	ILS		RDH
	CAT	GPA	
5.24 % (3.00°)	I	3.00°	53 FT