

INSTRUMENT APPROACH CHART - ICAO PLAN VIEW SCALE: 1:350 000

MOLDE

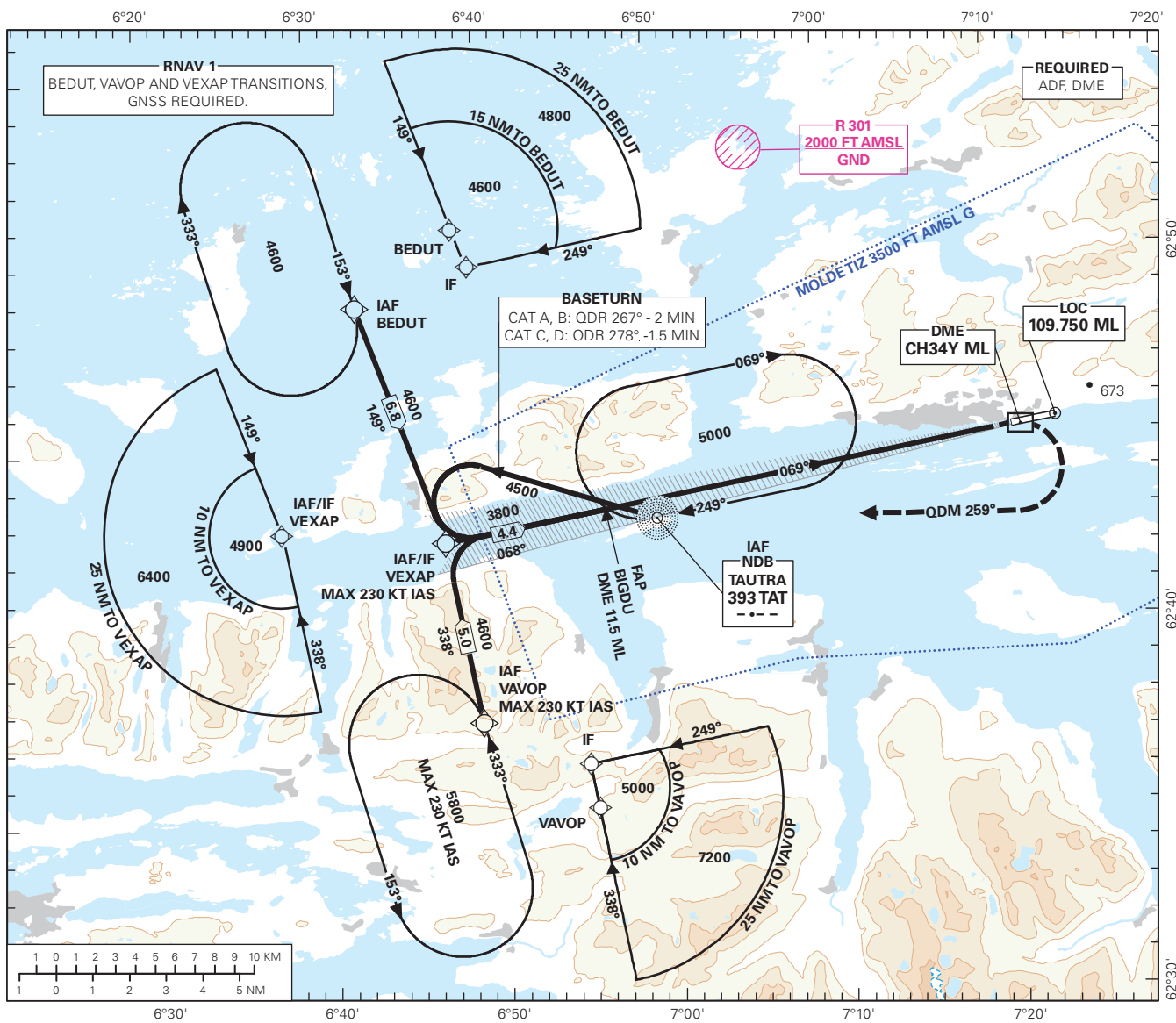
ÅRØ

ILS W RWY 07

**TRANSITION ALTITUDE
7000**

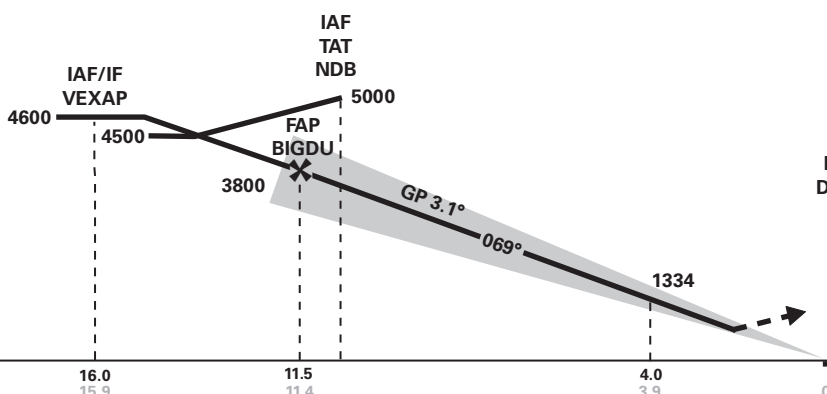
ATS AIRSPACE CLASSIFICATION: REF ENR 1.4.

<p>MSA 25 NM TAT</p>	ATIS: 130.075	AD ELEV: 10	
	APP: 119.350	THR ELEV: 10	DIST IN NM
	AFIS: 119.950	HGT RELATED TO THR RWY 07	ELEV, ALT AND HGT IN FT
	VDF: 119.950	CIRCLING HGT RELATED TO AD ELEV	
	BEARINGS ARE MAGNETIC - VAR 2 ° E (2020)		



DIST TO ML	9	8	7	6	5	4	3	2
ALT (HGT)	3036 (3026)	2692 (2682)	2350 (2340)	2009 (1999)	1671 (1661)	1334 (1324)	999 (989)	666 (656)

ILS RDH 54



MISSED APCH:
CLIMB ON COURSE 069° TO 500. TURN RIGHT TO INTERCEPT AND FOLLOW QDM 259° TO TAT. IF BELOW 4100 AT TAT, CONTINUE CLIMB ON QDR 275°. AT 4100 TURN LEFT DCT TAT. ENTER TAT HLDG CLIMBING TO 5000.

NO TURN BEFORE DME 1.0 BEFORE ML. MAX 185 KT IAS DURING INITIAL TURN.

CAT OF ACFT					FINAL APCH	DIST FAF - THR: 11.4						
	A	B	C	D		KT	70	90	120	150	180	
OCA(H) STRAIGHT - IN	CAT I 2.5%*	990 (980)	1000 (990)	1010 (1000)	1020 (1010)	SPEED	70	90	120	150	180	
	CAT I 4.0%*	425 (415)	435 (425)	445 (435)	455 (445)	TIME	MIN:SEC	-	-	-	-	
CIRCLING		790 (780)	1300 (1290)	1660 (1650)	1710 (1700)	ROD	FT/MIN	385	495	660	825	990

NOTE: CIRCLING S OF AD ONLY. *MMN MISSED APCH CLIMB GRADIENT.

CHANGES: MAGNETIC VARIATION, EDITORIALS.