

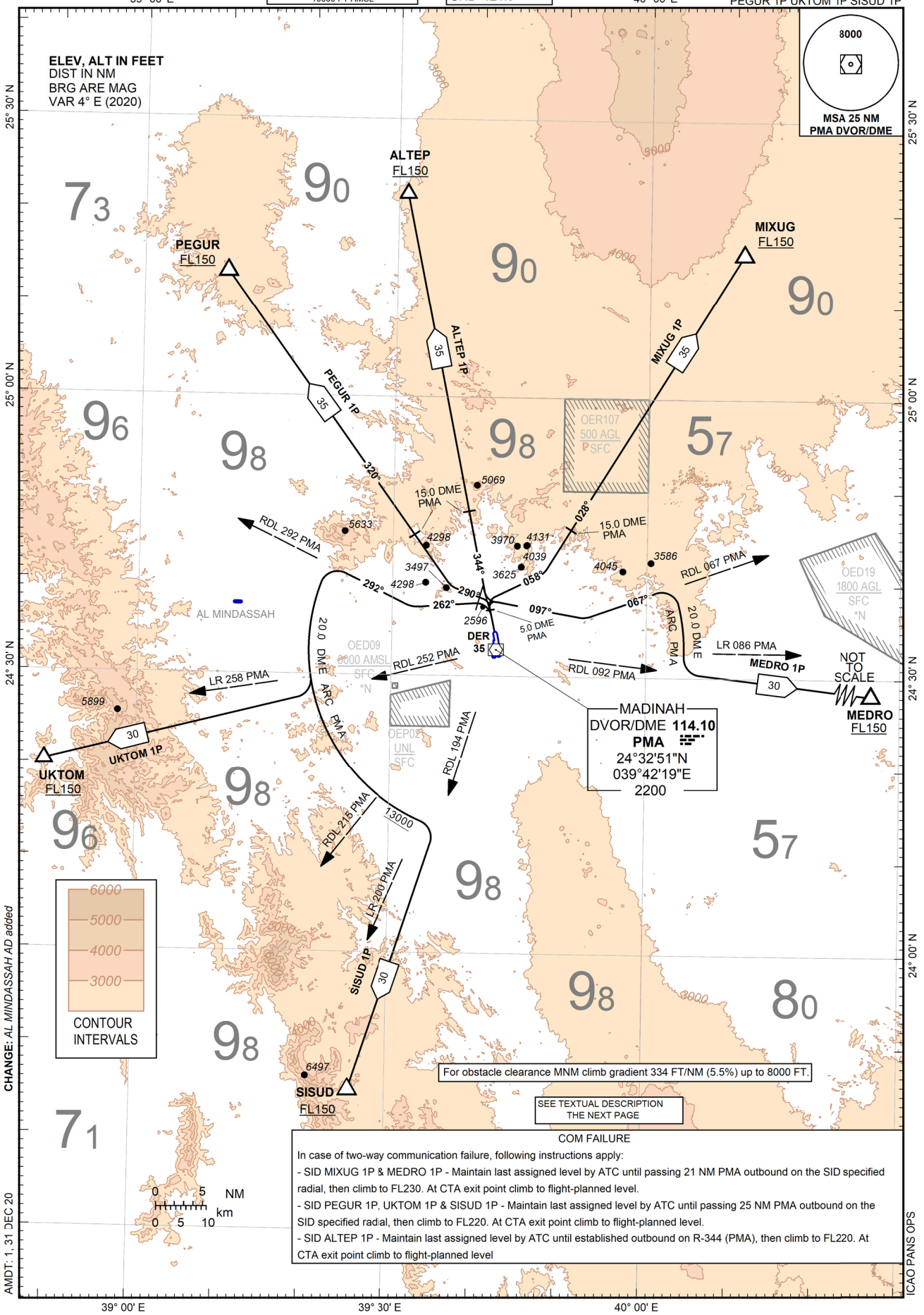
STANDARD DEPARTURE CHART - INSTRUMENT (SID) - ICAO

TRANSITION ALTITUDE
13000 FT
SPEED RESTRICTION
MAX 250 KIAS BELOW
10000 FT AMSL

APP 125.1 127.7
ATIS 126.85
TWR 118.3 124.2
GND 121.9

MADINAH / Prince Mohammad Bin Abdulaziz Intl (OEMA)

RWY 35  
MEDRO 1P MIXUG 1P ALTEP 1P  
PEGUR 1P UKTOM 1P SISUD 1P



CHANGE: AL MINDASSAH AD added

AMD: 1.31 DEC 20

ICAO PANS OPS

**COM FAILURE**

In case of two-way communication failure, following instructions apply:

- SID MIXUG 1P & MEDRO 1P - Maintain last assigned level by ATC until passing 21 NM PMA outbound on the SID specified radial, then climb to FL230. At CTA exit point climb to flight-planned level.
- SID PEGUR 1P, UKTOM 1P & SISUD 1P - Maintain last assigned level by ATC until passing 25 NM PMA outbound on the SID specified radial, then climb to FL220. At CTA exit point climb to flight-planned level.
- SID ALTEP 1P - Maintain last assigned level by ATC until established outbound on R-344 (PMA), then climb to FL220. At CTA exit point climb to flight-planned level