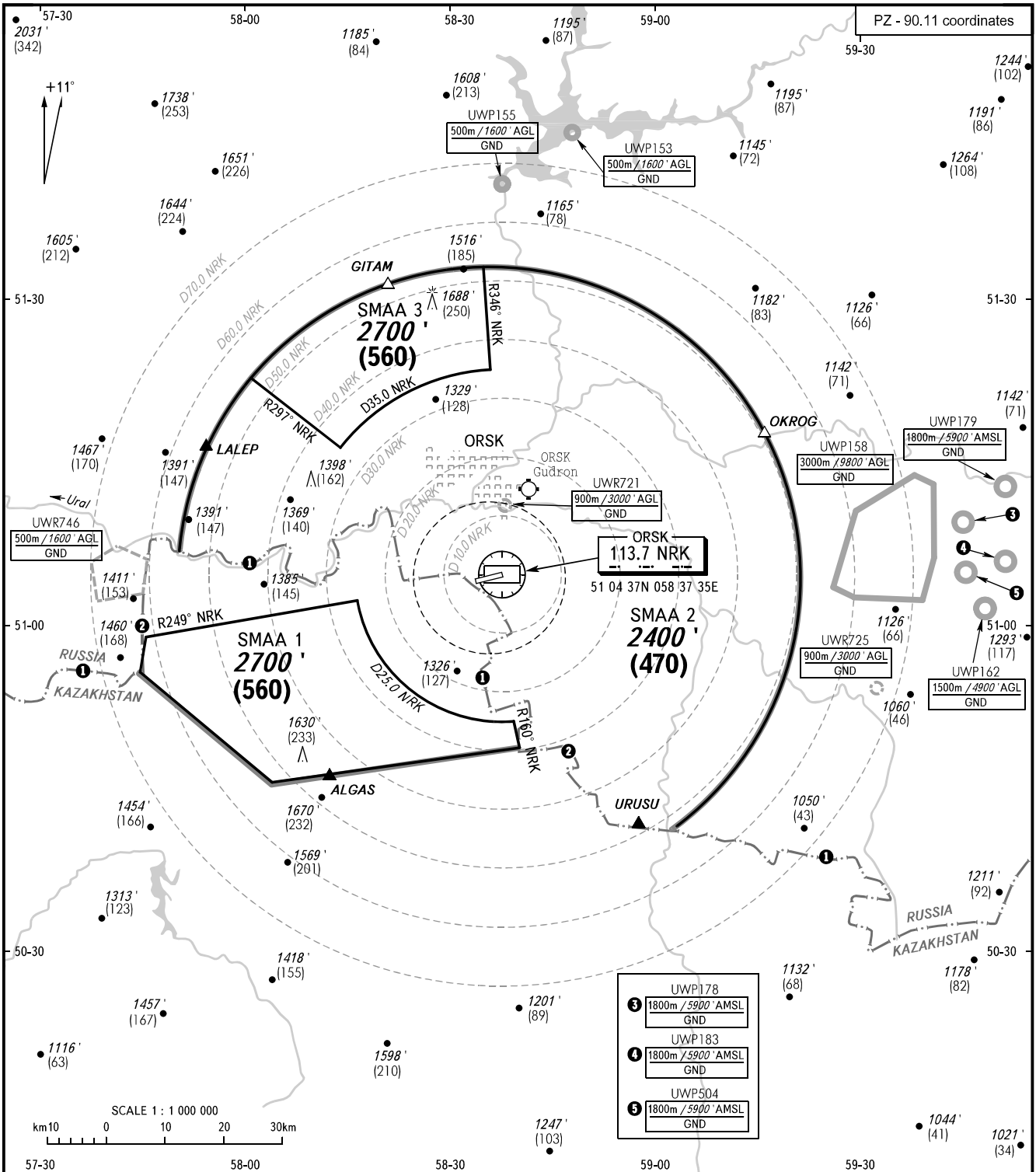


ATC SURVEILLANCE MINIMUM  
ALTITUDE CHART - ICAO

ELEV <b>909</b> /277m	TRANSITION ALT: <b>3000</b> ' TRANSITION HGT: <b>(640)</b>
--------------------------	---

ORSK, RUSSIA

ORSK



TOWER **122.700**

- WARNING:**
- The chart may only be used for cross-checking of altitudes assigned while the aircraft is identified under radar control.
  - The altitude value of SMAA is calculated for ISA conditions (+15°C). When vectoring is executed at a temperature of 0°C or below, the minimum vectoring altitudes must be corrected by altimeter temperature correction.
- ① FIR boundary coincides with the state border between RUSSIA and KAZAKHSTAN.  
② CTA boundary coincides with the state border between RUSSIA and KAZAKHSTAN.

BEARINGS AND TRACKS ARE MAGNETIC  
ALTITUDES IN **FEET**  
HEIGHTS IN METRES  
ELEVATIONS IN **FEET** AND METRES  
DISTANCES IN KILOMETRES

Alt set: -QNH(QFE on req);  
-hPa(mm on req).

CHANGE: New chart

**ORSK, RUSSIA**  
ORSK

<b>SURVEILLANCE MINIMUM ALTITUDE AREAS</b>		
IDENT	MNM ALT/HGT ft/m	LATERAL LIMITS (PZ-90.11 coordinates)
SMAA 1	2700' (560)	505844N 0574548E – 510215N 0581631E, then anticlockwise by arc of a circle radius of 25 KM centred at 510437N 0583735E to 505111N 0583917E – 504842N 0583936E, 504530N 0580418E, 505530N 0574500E, then along boundary to 505844N 0574548E.
SMAA 2	2400' (470)	505844N 0574548E, then along boundary to 510648N 0575035E, then clockwise by arc of a circle radius of 53 KM centred at 510421N 0583545E to 512238N 0580046E, 511617N 0581356E, then clockwise by arc of a circle radius of 35 KM centred at 510437N 0583735E to 512329N 0583554E, 513255N 0583451E, then clockwise by arc of a circle radius of 53 KM centred at 510421N 0583545E to 504127N 0590255E, then along boundary to 504842N 0583936E, 505111N 0583917E, then anticlockwise by arc of a circle radius of 25 KM centred at 510437N 0583735E to 510215N 0581631E, 505844N 0574548E.
SMAA 3	2700' (560)	512238N 0580046E – 511617N 0581356E, then clockwise by arc of a circle radius of 35 KM centred at 510437N 0583735E to 512329N 0583554E – 513255N 0583451E, then anticlockwise by arc of a circle radius of 53 KM centred at 510421N 0583545E to 512238N 0580046E.