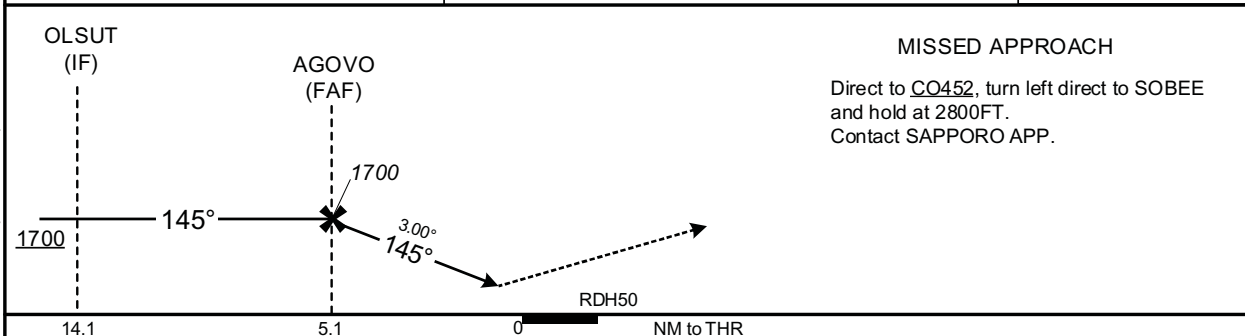
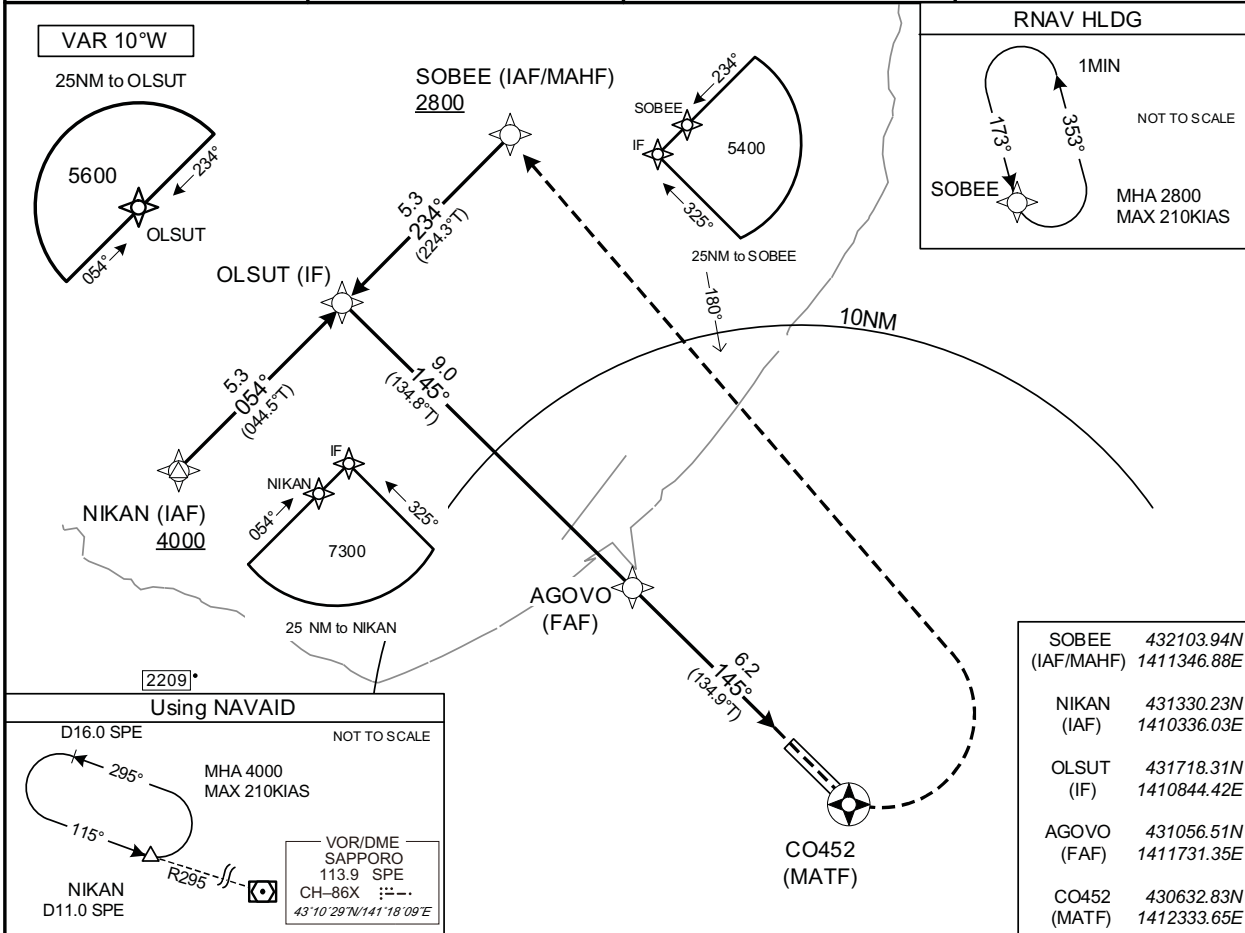


INSTRUMENT APPROACH CHART

RJCO / SAPPORO

RNP Y RWY14(LPV only)

SAPPORO APP 119.225 - 121.075 315.9	RNP APCH MSAS CH75888 M14A	SAPPORO TWR 118.1 - 126.2 - 140.5 138.05 - 121.8G	GCA AVBL CALL SAPPORO APP
--	---	--	--



Missed APCH climb gradient MNM 5.0%

CAT	MINIMA		THR elev.20	AD elev.26
	LPV	CIRCLING		
	DA(H)	RVR/CMV	MDA(H)	VIS
A	342(322)	1500	600(574)	1600
B		1800		2400
C	—	—	—	—
D	—	—	—	—

MINIMA with Missed APCH climb gradient of 2.5% are not established.
Circling to EAST side of RWY only.

CHANGE : HLDG pattern for using NAVAID(SOBEE) abolished.

INSTRUMENT APPROACH CHART

RJCO / SAPPORO

RNP Y RWY14(LPV only)

FAS DATA BLOCK

Operation type	0	LTP/FTP ellipsoidal height	+00374
SBAS service provider identifier	2	FPAP Latitude	430641.1115N
Airport identifier	RJCO	FPAP Longitude	1412322.2875E
Runway	14	Threshold crossing height	00015.0
Approach performance designator	0	TCH units selector	1
Route indicator	Y	Glide path angle	03.00
Reference path data selector	0	Course width at threshold	105.00
Reference path ID	M14A	∠ length offset	0192
LTP/FTP latitude	430719.8510N	HAL	40.00
LTP/FTP longitude	1412229.1365E	VAL	50.00
CRC remainder	DE9BC9B1		

Required additional data

LTP/FTP orthometric height	5.7
----------------------------	-----

CHANGE : Description of PROC name.