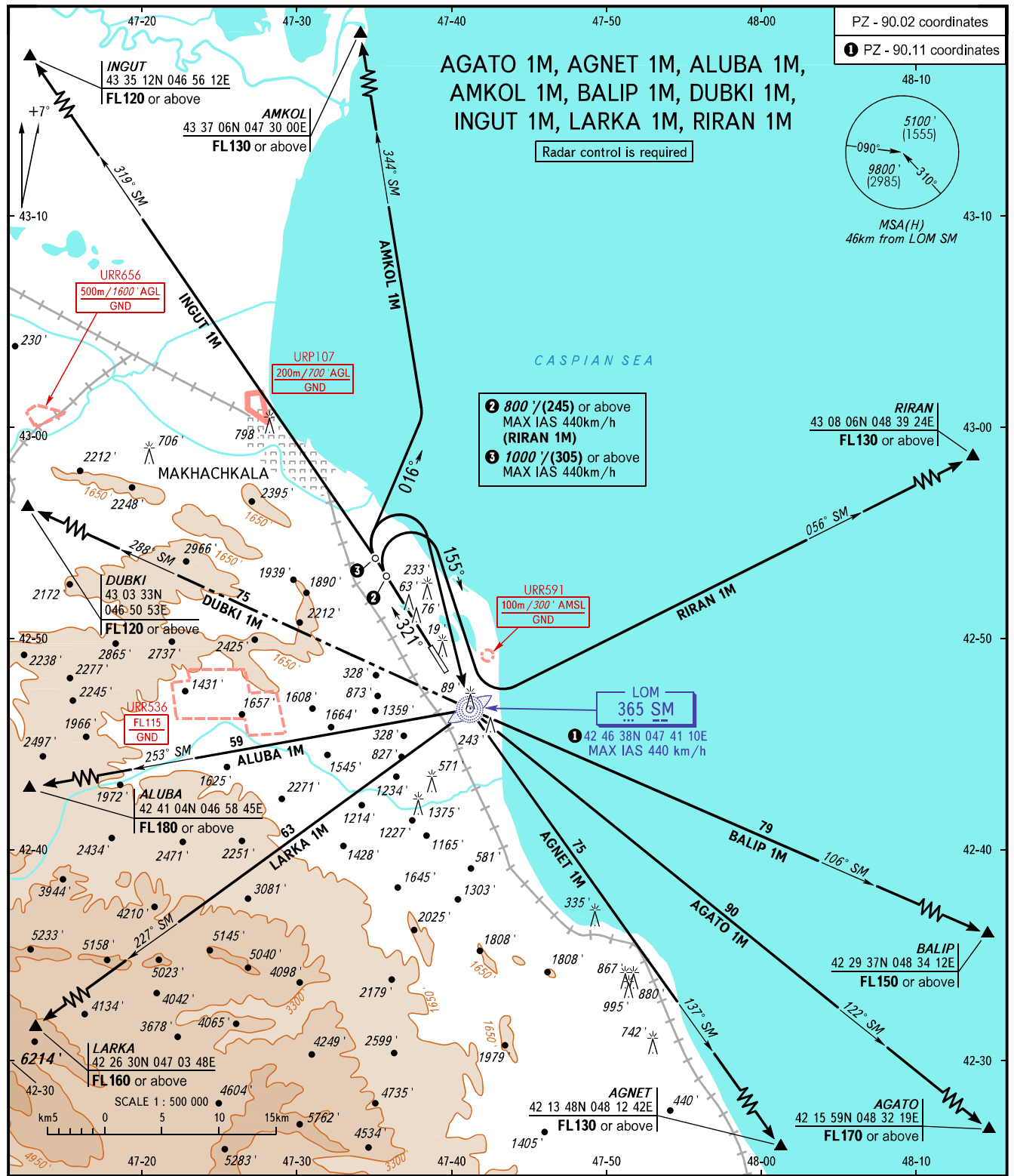


STANDARD DEPARTURE CHART  
INSTRUMENT (SID) - ICAO

TRANSITION  
ALTITUDE : 10000'

MAKHACHKALA, RUSSIA  
UYTASH  
RWY 32



START	121.300	The minimum climb gradients are as follows (required due to the airspace structure):	The minimum climb gradients are as follows (required due to obstacles):
RADAR	121.300		
APPROACH	119.700		
		- 4.3% up to FL170 for AGATO 1M; - 4.1% up to FL150 for BALIP 1M; - 3.7% up to FL130 for AGNET 1M; - 3.6% up to FL120 for INGUT 1M; - 6.0% up to FL180 for ALUBA 1M; - 5.2% up to FL160 for LARKA 1M; - 5.4% up to FL130 for AMKOL 1M; - 3.7% up to FL130 for RIRAN 1M.	- 3.4% up to 4000' for AGNET 1M; - 4.2% up to 9500' for ALUBA 1M; - 3.8% up to 4200' for DUBKI 1M; - 5.2% up to 2200' for INGUT 1M; - 4.8% up to 7200' for LARKA 1M; - 4.1% up to 1900' for RIRAN 1M.

BEARINGS AND TRACKS ARE MAGNETIC  
ALTITUDES AND ELEVATIONS IN FEET  
HEIGHTS IN METRES  
DISTANCES IN KILOMETRES

Alt set: -QNH(QFE on req);  
-hPa(mm on req).

**WARNING:**

1. Turn before passing DER is PROHIBITED.
2. DUBKI 1M is not AVBL when URR533, URR536 are active.
3. ALUBA 1M is not AVBL when URR536 is active.