

INSTRUMENT APPROACH CHART - ICAO

EGNOS CH90035 E04A

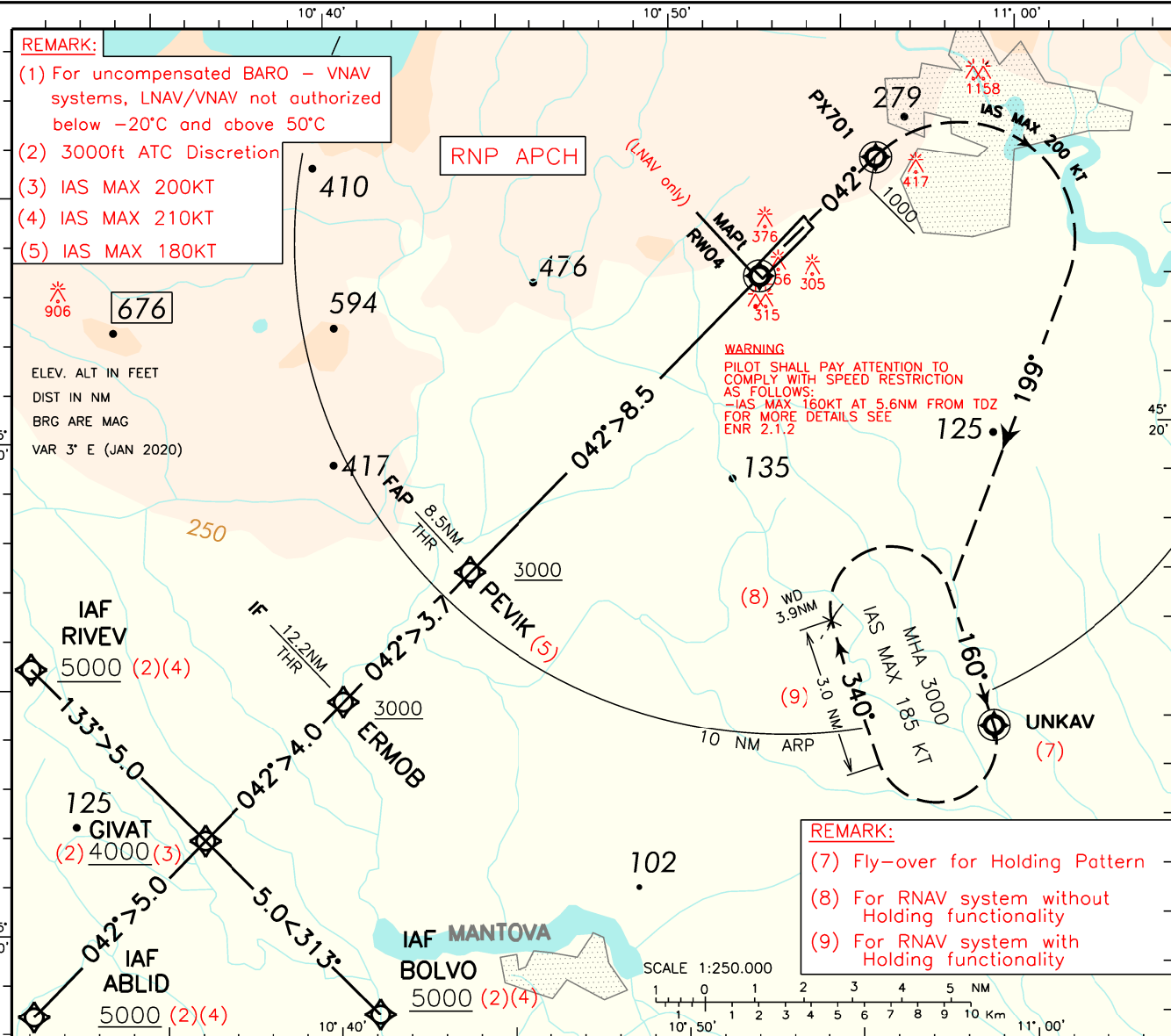
AERODROME ELEV 240FT

APP Milano Radar **135.900 (124.250)**
TWR Villafranca TWR **118.650**
ATIS Verona Arrival and Departure Information **124.130**

VERONA/ VILAFRANCA LIPX RNP RWY 04

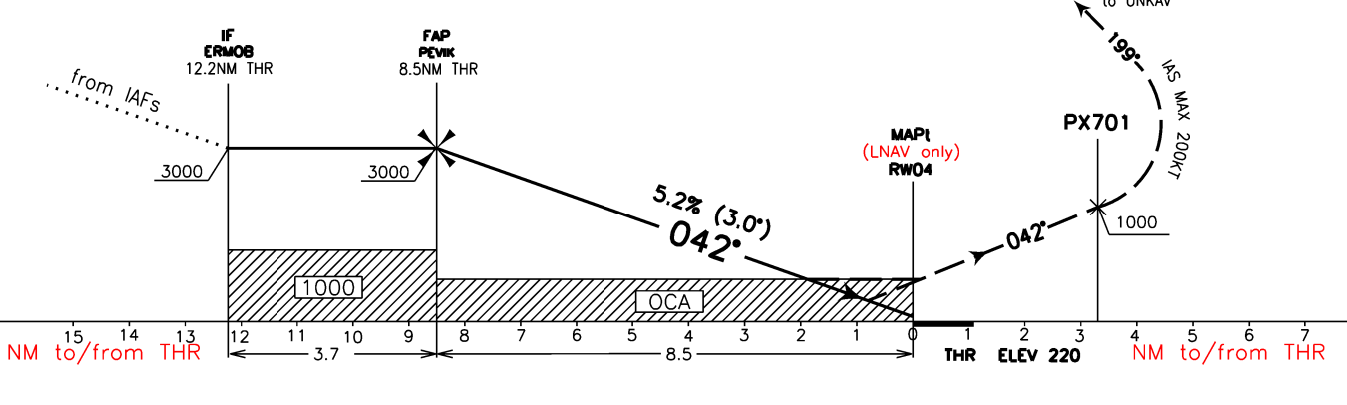
DOC.8168-ED.7-2020

CHANGE: MINIMA OCA (OCH) LNAV/VNAV AND CIRCLING CAT C MODIFIED, MAG TRACK BETWEEN GIVAT-ERMOB MODIFIED



TRANSITION ALT 6000
 RDH 17.45 M

MISSED APPROACH: Maintaining final TR 042°, climb to 3000 ft. At PX701 (at 1000 ft or above) turn right on TR 199° to join and follow TR 160° bound to UNKAV missed approach holding pattern. Hold at 3000 ft, inbound TR 160°, right turns, IAS MAX 185 kt.



STRAIGHT IN APPROACH	OCA (OCH)			
	A	B	C	D
LPV	420 (200)	420 (200)	422 (202)	433 (213)
LNAV/VNAV	490 (270)	500 (280)	510 (290)	520 (300)
LNAV	660 (440)			
CIRCLING (6)	800 (560)	970 (730)	1210 (970)	

REMARK:
 (6) Circling allowed South-East of the RWY only.

GS	FT PER MIN	DIST THR 04	ALT (HGT)
80	425	7 NM	2500 (2280)
100	530	6 NM	2180 (1960)
120	635	5 NM	1865 (1645)
140	745	4 NM	1545 (1325)
160	850	3 NM	1225 (1005)
180	955	2 NM	905 (685)

