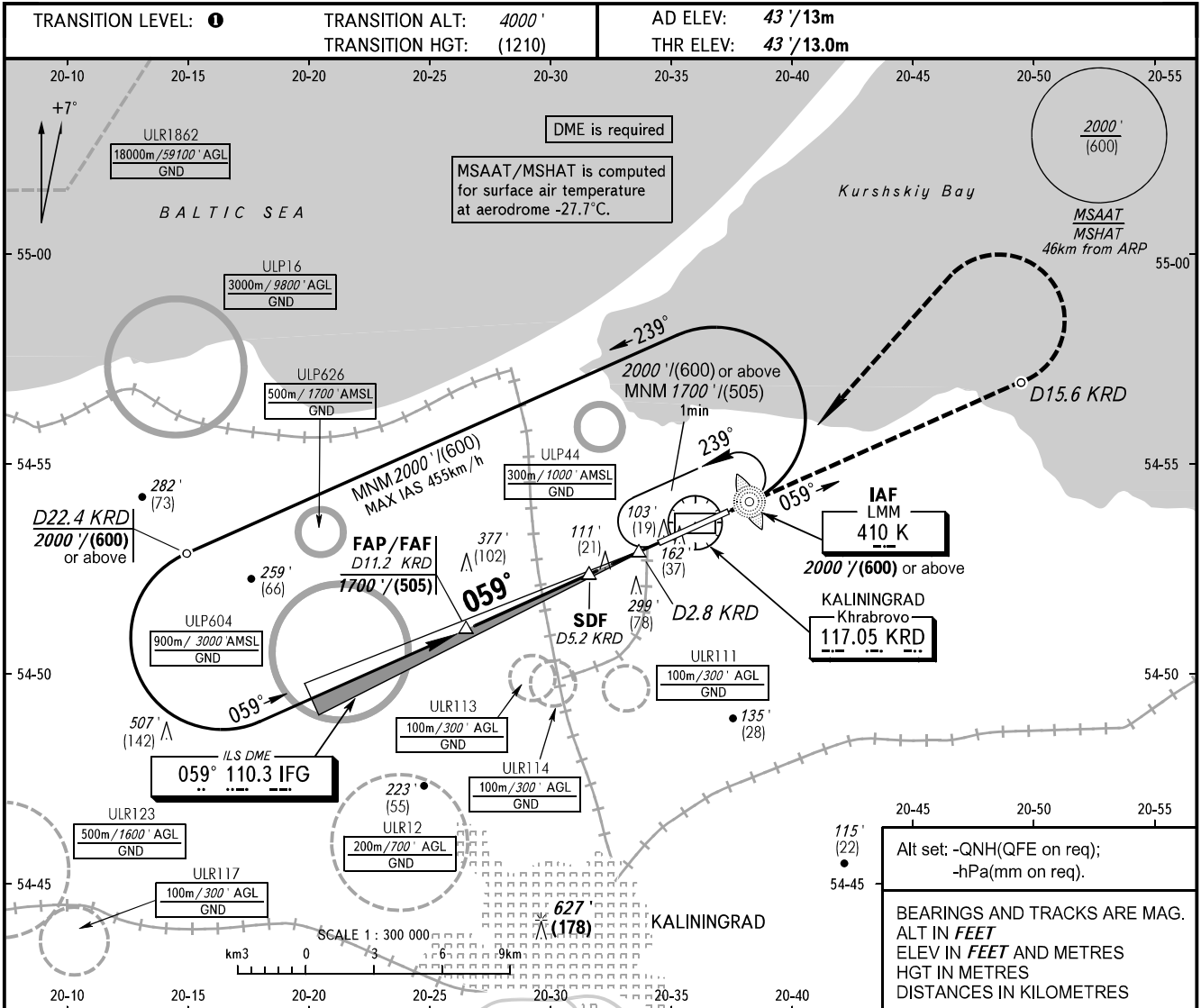


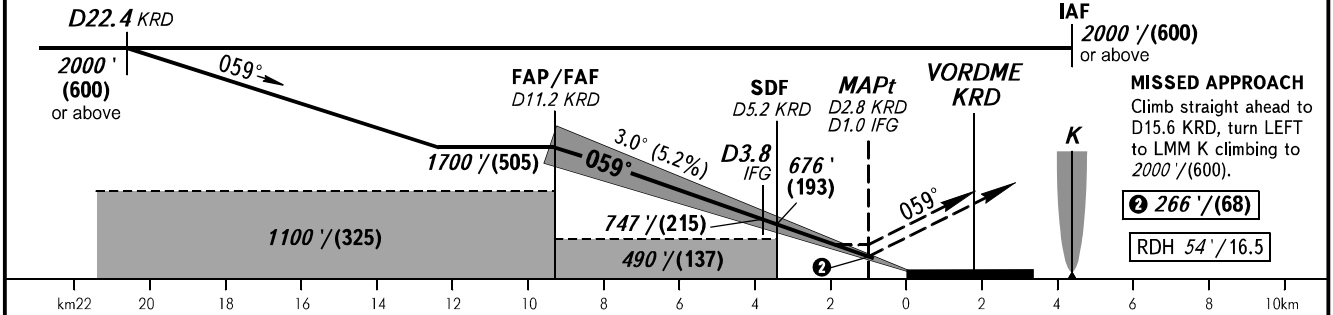
**INSTRUMENT  
APPROACH  
CHART - ICAO**

TOWER **127.200**

**KALININGRAD, RUSSIA  
KHRABROVO  
ILS Z CAT I, LOC Z RWY 06**



DME KRD	10.0	8.0	6.0	4.0
ALTITUDE/HEIGHT	1502' / (445)	1158' / (340)	814' / (235)	470' / (131)



OCA(H)		A	B	C	D					
Straight-in	<b>CAT I</b>									
	Approach	With SDF	187' (144') (44)	198' (155') (48)	210' (167') (51)	224' (181') (56)				
		WO SDF	360' (320') (97)	360' (320') (97)	360' (320') (97)	360' (320') (97)				
Circling	LOC	490' (450') (137)	490' (450') (137)	490' (450') (137)	490' (450') (137)					
	WO LOC	600' (550') (170)	600' (550') (170)	700' (650') (205)	780' (730') (225)					
GROUND SPEED	km/h	150	180	210	240	270	300	330	360	390
RATE OF DESCENT	m/s	2.2	2.6	3.0	3.5	3.9	4.4	4.8	5.2	5.7
	ft/min	433	512	610	689	768	866	945	1024	1122

**TRANSITION LEVEL:**  
 - FL050 when QNH is 1013 hPa (760mm mercury column) or above;  
 - FL060 when QNH is 977 hPa (733mm mercury column) or above, but less than 1013 hPa (760mm mercury column);  
 - FL070 when QNH is less than 977 hPa (733mm mercury column).  
**WARNING:**  
 1. MAPt at D2.8 KRD. Timing not authorized for defining MAPt.  
 2. Zero range of DME IFG is indicated at RWY 06 THR.

CHANGE: ULP626