

STANDARD ARRIVAL CHART
INSTRUMENT (STAR) - ICAO

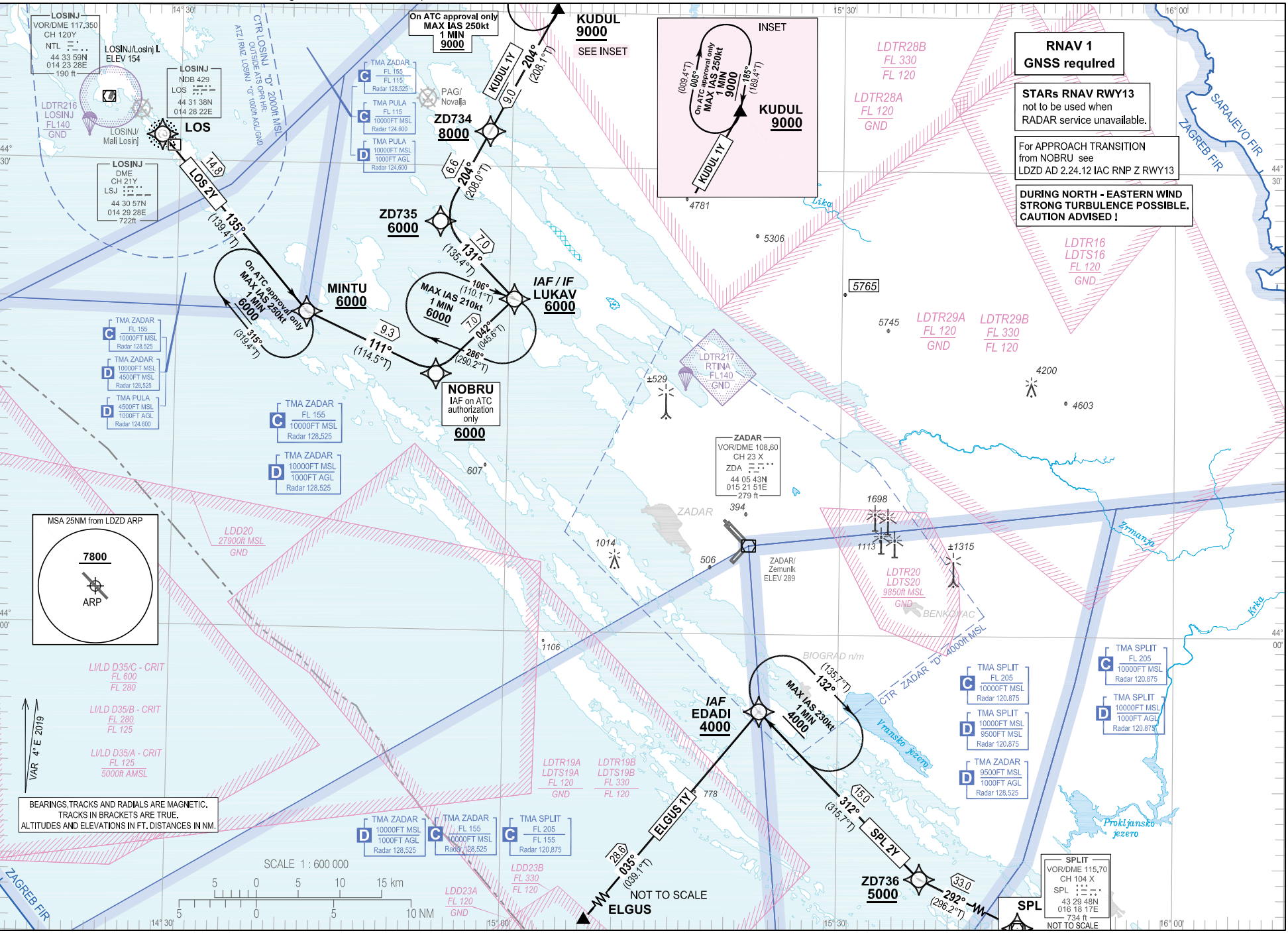
TRANSITION ALTITUDE
10 000

ZADAR RADAR 128.525
ZADAR TOWER 123.700
ZADAR DELIVERY 132.975

LOS 2Y KUDUL 1Y SPL 2Y ELGUS 1Y

ZADAR / Zemunik (LDZD)
RNAV RWY 13

CHANGE: TMAs classification vertical limits; Parachuting zones added; PBN box updated; Notes; Editorial.



ZADAR / Zemunik (LDZD)

RNAV RWY 13

LOS 2Y KUDUL 1Y SPL 2Y ELGUS 1Y

LDZD RNAV STANDARD ARRIVAL RWY 13

Proposed tabular description for navigation database coding

Serial number	Route	Path descriptor	Waypoint name	Flyover	Course °M (°T)	Magnetic variation	Distance (NM)	Turn direction	Altitude (ft)	Speed (kt)	Remarks	NAV SPEC
010	LOS 2Y	IF	LOS	-	-	4°E	-	-	-	-	-	RNAV 1
020		TF	MINTU	-	135° (139.4°T)	4°E	14.8	-	+6000	-	-	
030		TF	NOBRU	-	111° (114.5°T)	4°E	9.3	-	+6000	-	IAF on ATC authorization only for RNP Z RWY 13	
040		TF	LUKAV	-	042° (045.6°T)	4°E	7.0	-	+6000	-	IAF/IF	
010	KUDUL 1Y	IF	KUDUL	-	-	4°E	-	-	+9000	-	-	RNAV 1
020		TF	ZD734	-	204° (208.1°T)	4°E	9.0	-	+8000	-	-	
030		TF	ZD735	-	204° (208.0°T)	4°E	6.6	-	+6000	-	-	
040		TF	LUKAV	-	131° (135.4°T)	4°E	7.0	-	+6000	-	IAF	
010	SPL 2Y	IF	SPL	-	-	4°E	-	-	-	-	-	RNAV 1
020		TF	ZD736	-	292° (296.2°T)	4°E	33.0	-	+5000	-	-	
030		TF	EDADI	-	312° (315.7°T)	4°E	15.0	-	+4000	-	IAF	
010	ELGUS 1Y	IF	ELGUS	-	-	4°E	-	-	-	-	-	RNAV 1
020		TF	EDADI	-	035° (039.1°T)	4°E	28.6	-	+4000	-	IAF	

IAF on ATC authorization only: For APPROACH TRANSITION from NOBRU see LDZD AD 2.24.12 IAC RNP Z RWY 13

CHANGE: TMA's classification vertical limits; Parachuting zones added; PBN box updated; Notes; Editorial.

RNAV HOLDING tabular description

Waypoint name	Path descriptor	Inbound course °M (°T)	Leg time/ distance (NM)	Turn direction	Minimum altitude (ft)	Maximum altitude (ft)	Speed limit MAX IAS (kt)	Magnetic variation	Remarks	NAV SPEC
MINTU	HM	135° (139.4°T)	1 MIN / -	R	6000	-	250	4°E	On ATC approval only	RNAV 1
KUDUL	HM	185° (189.4°T)	1 MIN / -	R	9000	-	250	4°E	On ATC approval only	RNAV 1
EDADI	HM	312° (315.7°T)	1 MIN / -	R	4000	-	230	4°E	-	RNAV 1
LUKAV	HM	106° (110.1°T)	1 MIN / -	R	6000	-	210	4°E	-	RNAV 1

Waypoint coordinates

Waypoint name	WGS-84 latitude	WGS-84 longitude
EDADI	435500.1N	0152257.8E
LOS	443137.55N	0142822.25E
SPL	432947.69N	0161817.00E
ELGUS	433252N	0145800E
LUKAV	442126.3N	0150026.7E
MINTU	442023.9N	0144144.5E
NOBRU	441632.4N	0145328.9E
KUDUL	444011N	0150355E
ZD734	443215.3N	0145759.7E
ZD735	442623.5N	0145338.5E
ZD736	434416.3N	0153727.1E

CHANGE: TMA classification vertical limits; Parachuting zones added; PBN box updated; Notes; Editorial.

OVA STRANICA JE NAMJERNO OSTAVLJENA PRAZNA
THIS PAGE INTENTIONALLY LEFT BLANK