

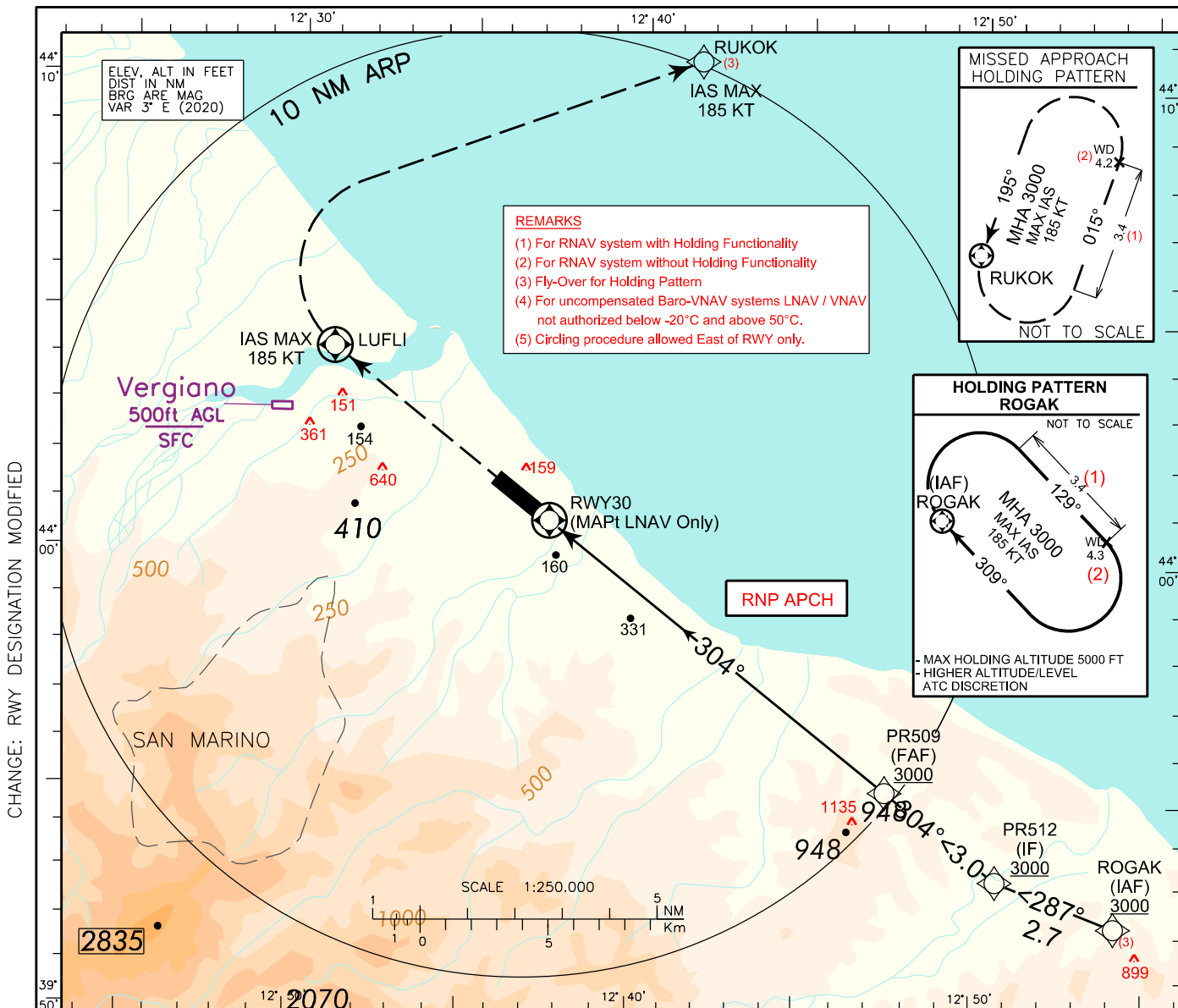
**INSTRUMENT APPROACH CHART - ICAO**

EGNOS  
CH 77330  
E30A

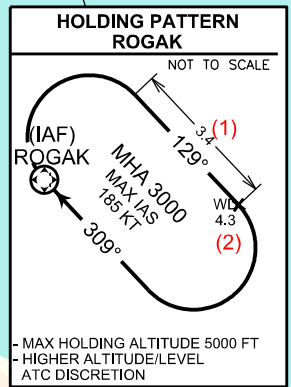
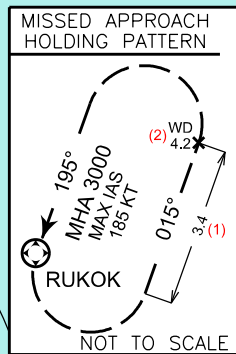
**AERODROME**  
ELEV 41  
TWR Rimini TWR

APP Bologna APP/Radar CH 118.150 (133.775)  
TWR Rimini TWR 131.225

**RIMINI/Miramare (LIPR)**  
RNP RWY 30

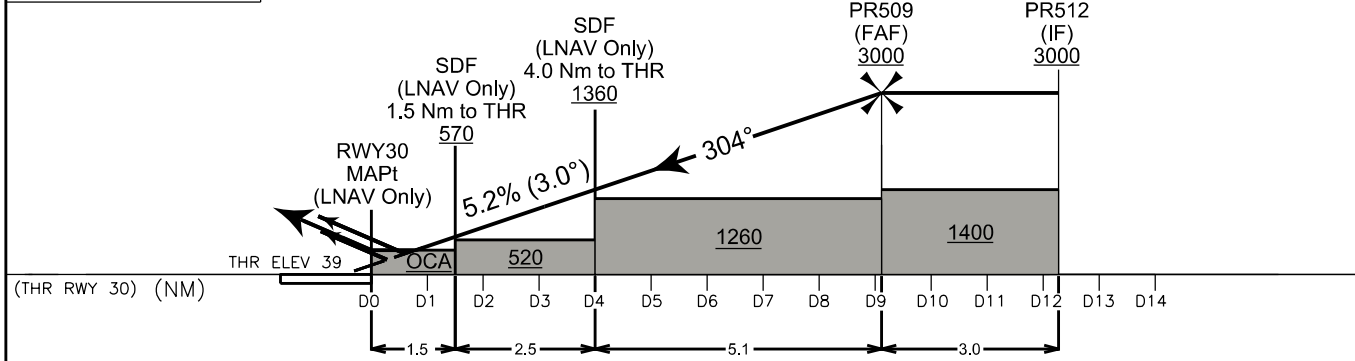


**REMARKS**  
(1) For RNAV system with Holding Functionality  
(2) For RNAV system without Holding Functionality  
(3) Fly-Over for Holding Pattern  
(4) For uncompensated Baro-VNAV systems LNAV / VNAV not authorized below -20°C and above 50°C.  
(5) Circling procedure allowed East of RWY only.



TRANSITION ALT 6000
TCH 17.50M
VPA 3°

**MISSED APPROACH:** Climbing to 3000 FT, proceed straight ahead direct to LUFLI. Turn Right (IAS MAX 185 Kt) direct to RUKOK. Hold as published.



		OCA (OCH)	A	B	C	D
STRAIGHT IN APPROACH	LPV	280 (241)	292 (253)	300 (261)	311 (272)	
	LNAV/VNAV	390 (351)	400 (361)	410 (371)	440 (401)	
	LNAV	450 (409)				
CIRCLING (5)		700 (659)	940 (899)	1100 (1059)		

**REMARK: (5)**  
Circling procedure allowed East of RWY only.  
**NOT ALLOWED**

GS	FT/MIN	THR 30	ALT (HGT)
70	372	D 8	2643 (2604)
90	478	D 7	2325 (2286)
110	584	D 6	2007 (1968)
130	690	D 5	1688 (1649)
150	797	D 4	1370 (1331)
170	903	D 3	1052 (1013)
190	1009	D 2	733 (694)
210	1115	D 1	415 (376)

