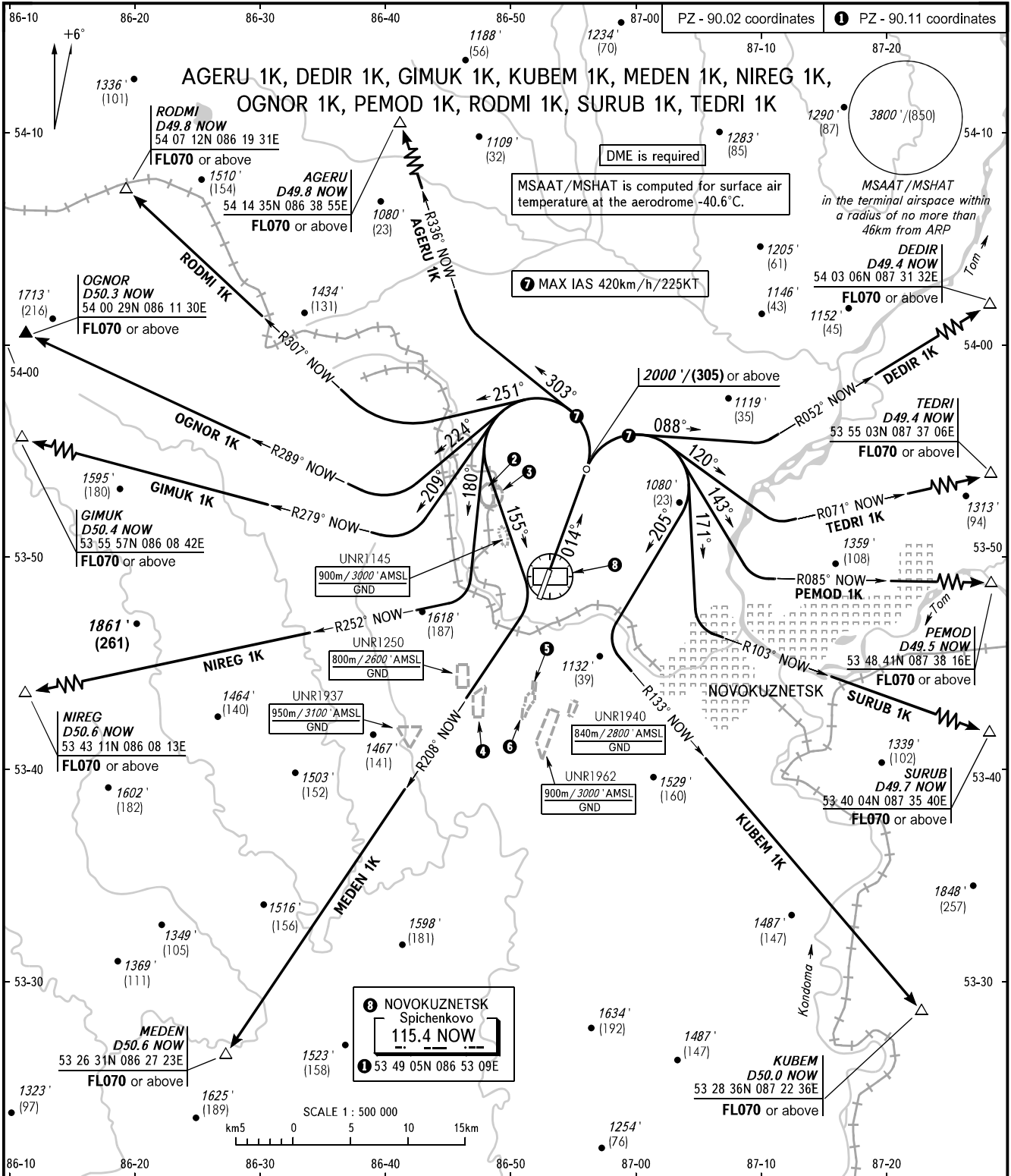


STANDARD DEPARTURE CHART
INSTRUMENT (SID) - ICAO

TRANSITION ALT: **4000'**
TRANSITION HGT: **(915)**

NOVOKUZNETSK, RUSSIA
SPICHENKOVO
RWY 01



START APPROACH	121.200 118.600	2 UNR1249 750m/2500' AMSL GND	3 UNR1277 670m/2200' AMSL GND	4 UNR1986 850m/2800' AMSL GND	WARNING: 1. Turn before passing DER is PROHIBITED. 2. MINIMUM CLIMB GRADIENT (due to airspace structure): AGERU 1K: 3.8% up to FL070; DEDIR 1K: 3.5% up to FL070. 3. AGERU 1K, RODMI 1K, OGNOR 1K, GIMUK 1K, NIREG 1K, MEDEN 1K require permission to overfly UNR1145, UNR1249 (during their activity) or ATS unit coordination.
		5 UNR1987 900m/3000' AMSL GND	6 UNR1939 900m/3000' AMSL GND		

BEARINGS AND TRACKS ARE MAGNETIC
ALTITUDES IN FEET, HEIGHTS IN METRES
ELEVATIONS IN FEET AND METRES
DISTANCES IN KILOMETRES

Alt set: -QNH(QFE on req);
-hPa(mm on req).