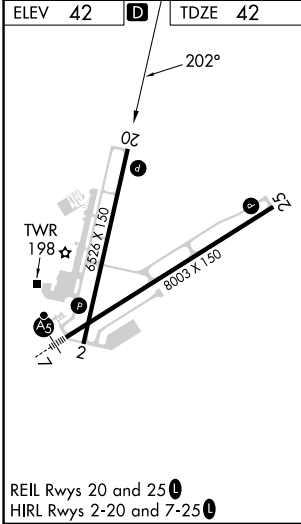
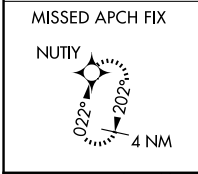
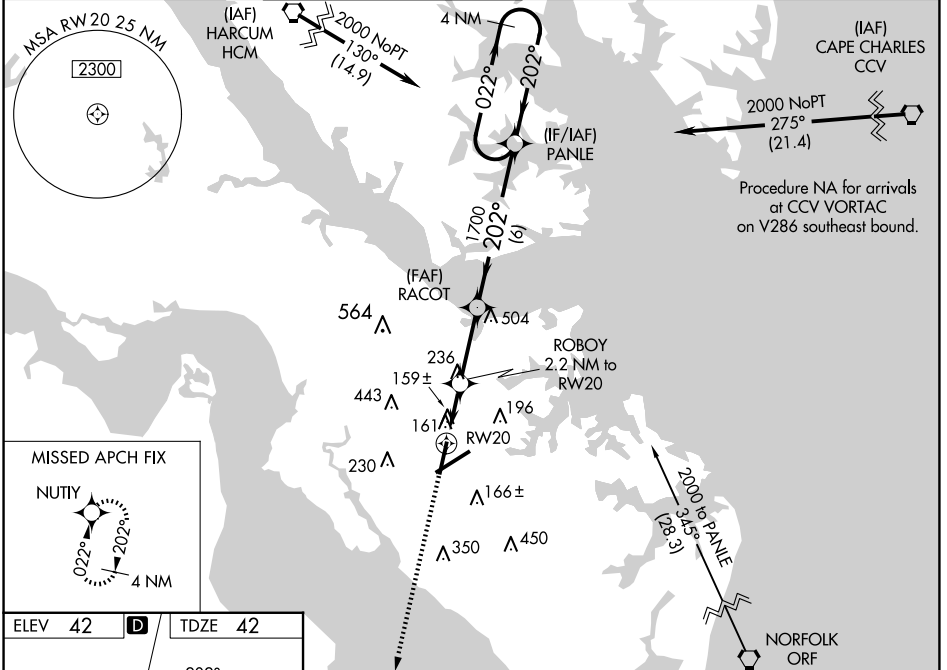


WAAS CH <b>97420</b> <b>W20A</b>	APP CRS <b>202°</b>	Rwy Idg TDZE Apt Elev	<b>6526</b> <b>42</b> <b>42</b>
--	------------------------	-----------------------------	---------------------------------------

# RNAV (GPS) RWY 20

NEWPORT NEWS/WILLIAMSBURG INTL (PHF)

RNP APCH.		MISSED APPROACH: Climb to 2300 direct NUTY and hold.			
<p><b>▼</b> For uncompensated Baro-VNAV systems, LNAV/VNAV NA below -11°C or above 54°C.  <b>▲</b> Rwy 20 helicopter visibility reduction below ¾ SM NA.</p>					
ATIS <b>128.65</b>	NORFOLK APP CON <b>125.7 335.625</b>	NEWPORT NEWS TOWER ★ <b>118.7(CTAF) 0 257.9</b>	GND CON <b>121.9 348.6</b>	CLNC DEL <b>121.65 225.4</b>	UNICOM <b>122.95</b>



ELEV 42	<b>D</b>	TDZE 42		
<p>2300 NUTY</p> <p>* LNAV only</p> <p>* 1.1 NM to RW20</p> <p>ROBOY 2.2 NM to RW20</p> <p>RACOT 1700</p> <p>PANLE 4 NM Holding Pattern</p> <p>202°</p> <p>2000</p> <p>GP 3.00° TCH 42</p>				
CATEGORY	A	B	C	D
LPV DA	379-1½ 337 (400-1½)			
LNAV/VNAV DA	474-1½ 432 (500-1½)			
LNAV MDA	440-1	398 (400-1)	440-1½	398 (400-1½)
<b>C</b> CIRCLING	520-1 478 (500-1)	540-1 498 (500-1)	760-2 718 (800-2)	780-2¼ 738 (800-2¼)

NE-3, 20 MAR 2025 to 17 APR 2025

NE-3, 20 MAR 2025 to 17 APR 2025