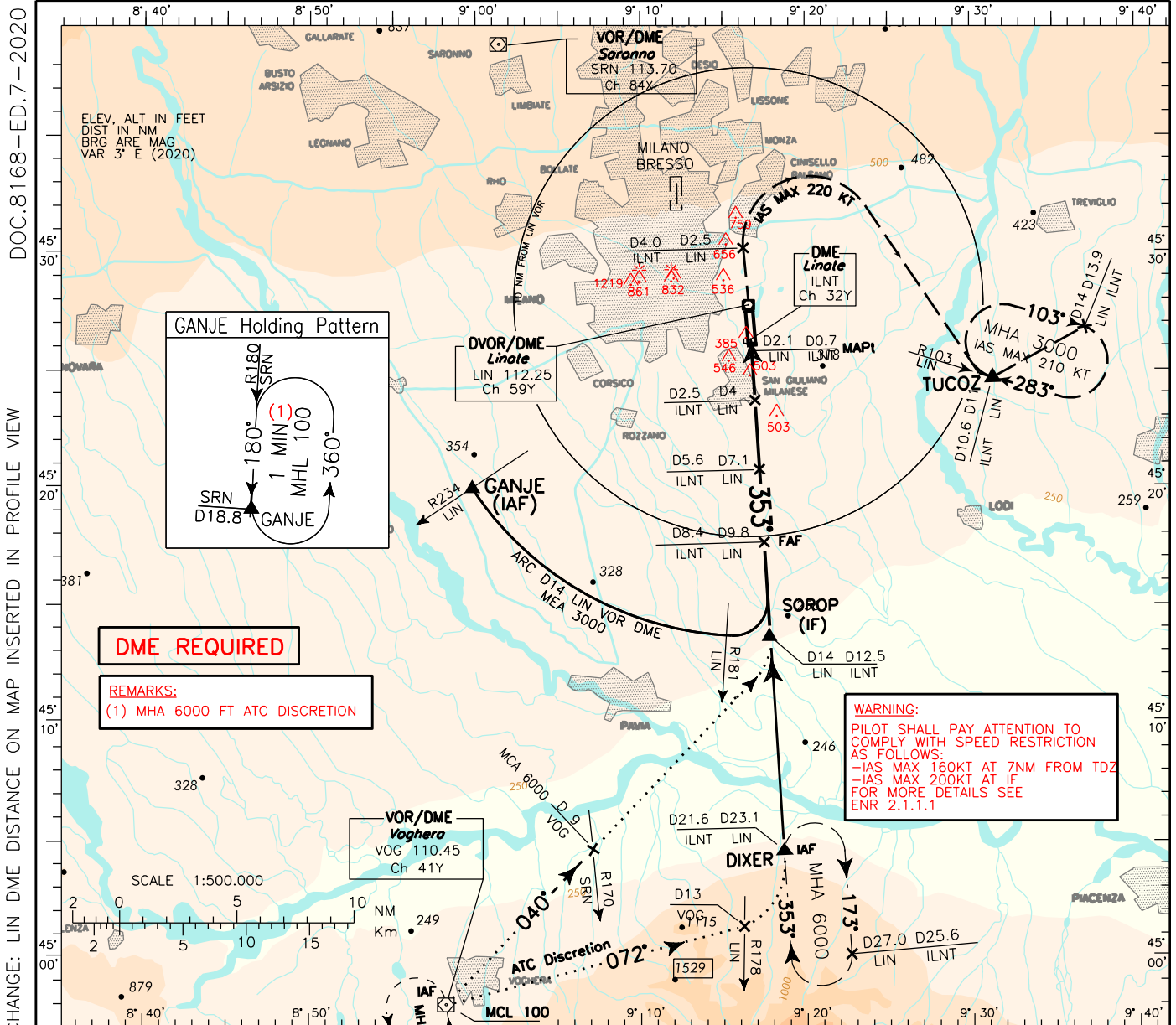


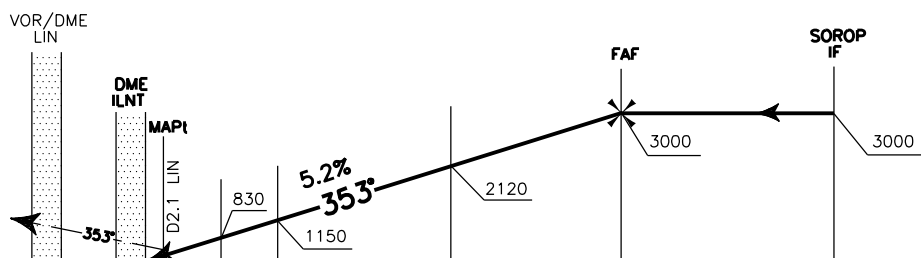
**INSTRUMENT APPROACH CHART - ICAO**

**AERODROME ELEV** 353  
**APP** Milano Radar  
**TWR** Linate TWR 118.100 (118.400)  
**ATIS** Linate Terminal Information 136.375

**MILANO/Linate (LIML)**  
**VOR RWY35**



**MISSED APPROACH:**  
 Climbing to 3000 ft proceed on TR 353°, at 2.5NM LIN DME after LIN DME (or at 4NM ILNT DME after ILNT DME) to be reached at or above 1000 ft, turn right (IAS MAX 220 kt) until joining RDL 103 LIN VOR inbound to TUCOZ missed approach holding pattern. Hold as published.



<b>LIN DME</b>	THR ELEV 337	D0	D1	D2	D3	D4	D5	D6	D7.1	D8	D9	D10	D11	D12	D13	D14	<b>LIN DME</b>
<b>ILNT DME</b>		D0	0.7D1	D2.5	D4	D5.6	D7	D8.4	D12.5								<b>NM</b>

<b>STRAIGHT IN APPROACH</b>	<b>VOR/DME</b>	A	B	C	D
		800 (463)			
<b>CIRCLING (EAST OF RWY)</b>		900 (547)		1200 (847)	

<b>CIRCLING SECTORS</b>	<b>GS</b>	<b>FT PER MIN</b>	<b>DIST</b>	<b>ALT (HGT)</b>	<b>MNM SECT ALT</b> LIN VOR/DME
	80	420	7LIN	2100 (1763)	
	100	525	6LIN	1780 (1443)	
	120	630	5LIN	1465 (1128)	
	140	735	4LIN	1150 (813)	
	160	845	3LIN	830 (493)	
	180	950	2LIN	510 (173)	