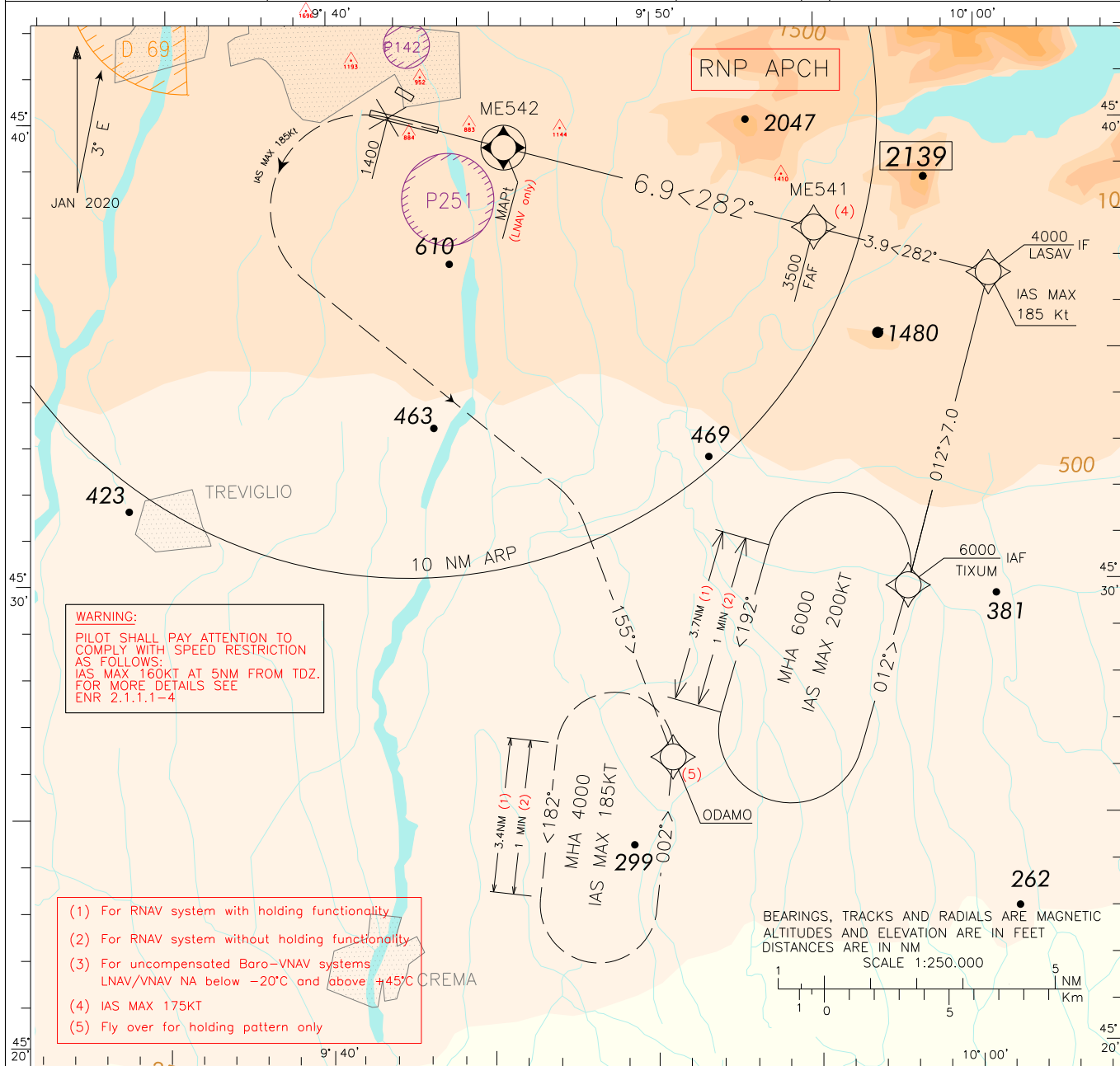


ICAO - INSTRUMENT APPROACH CHART

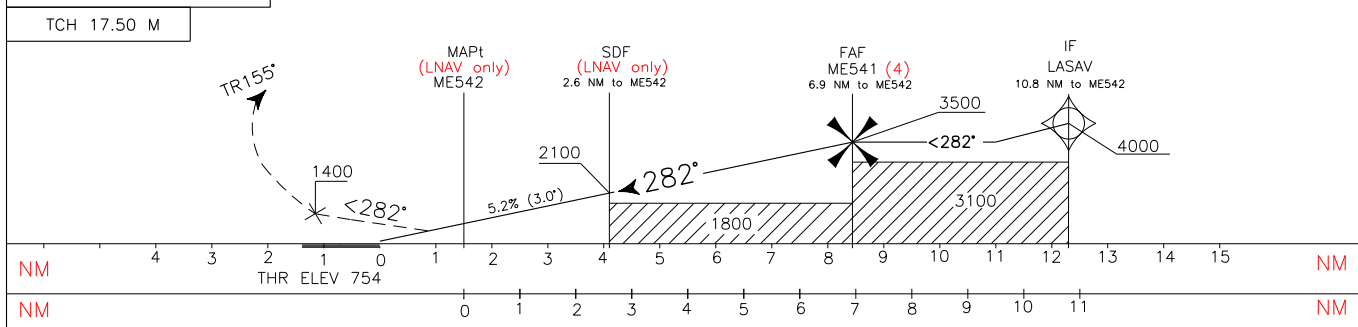
DOC 8168 - ED 6 - 2014 AMDT 8

CHANGE: ATIS FREQUENCY UPDATED

APP	Milano Radar	126.750 (126.300)	AD ELEV	782	LIME BERGAMO/ORIO AL SERIO
TWR	Orio TWR	125.875 (CH 134.105)			
ATIS	Bergamo ATIS Information	118.540			
					RNP Y RWY28



TRANSITION ALT 6000
MISSED APPROACH: Proceed on TR 282° climbing to 4000 ft; at 1400 ft, not before MAPt (ME542), turn left (IAS MAX 185kt) to join Track 155° bound to ODAMO holding pattern



OCA (OCH)					CIRCLING SECTOR: Only South of RWY	MAPt (ME542) DISTANCE	ALT(HGT)	GS	FT PER MIN	MNM SECT ALT 25 NM 12400 ARP	
STRAIGHT IN APPROACH	LNAV/VNAV(3)	1250 (496)	1260 (506)	1270 (516)		1280 (526)	6	3200(2446)	80		425
	LNAV	1300 (546)				5	2880(2126)	100	530		
CIRCLING RWY 10		1490 (708)	1790 (1008)	2100 (1318)		4	2565(1811)	120	635		
						3	2245(1491)	140	745		
						2	1925(1171)	160	850		
						1	1605(851)	180	955		

TABULAR DESCRIPTION**RNP Y RWY28 – Instrument Approach Procedure**

Serial Number	Path Terminator	Waypoint Identifier	Fly Over	Course °M(°T)	Magnetic Variation	Distance (NM)	Turn Direction	Altitude (ft)	Speed Limit (kt)	VPA (°)/TCH (m)	Navigation Specification
010	IF	TIXUM	-	-	-	-	-	+6000	-	-	RNP APCH
020	TF	LASAV	-	012° (015.2°)	-	7.0	-	+4000	-185	-	RNP APCH
030	TF	ME541	-	282° (285.2°)	-	3.9	-	+3500	-175	-	RNP APCH
040	TF	ME542	Y	282° (285.2°)	-	6.9	-	+1300 (1)	-	-	RNP APCH
	-	RWY28	Y	282° (285.2°)	-	-	-	@811 (2)	-	-3.0/17.5	RNP APCH
050	CA	-	-	282° (285.2°)	-	-	-	+1400	-185	-	RNP APCH
060	CF	ODAMO	-	155° (158.1°)	3 E	-	L	+4000	-	-	RNP APCH
070	HF	ODAMO	Y	002° (005.1°)	-	-	L	+4000	-185	-	RNAV1/RNP1(3)

(1) For LNAV only

(2) THR Altitude plus TCH

(3) For "monitoring and alerting" reasons, RNP1 specification is required in case of radar service unavailability or degradation

Holding RNAV

Path Terminator	Waypoint Identifier	Inbound Course °M (°T)	Leg Distance (NM) (1)	Timing(min.)/Waypoint Distance (NM) (2)	Turn Direction	Minimum Altitude (FT)	Maximum Altitude (FL)	Speed Limit (kt)	Magnetic Variation (°)	Navigation Specification
HM	TIXUM	012°(015.0°)	3.7	1/-	L	6000	-	-200	3 E	RNAV1/RNP1(3)
HM	ODAMO	002°(005.0°)	3.4	1 / -	L	4000	-	-185	3 E	RNAV1/RNP1(3)

(1) RNAV system with holding functionality

(2) RNAV system without holding functionality

(3) For "monitoring and alerting" reasons, RNP1 specification is required in case of radar service unavailability or degradation

WAYPOINT LIST

Waypoint Identifier	Coordinates
ME541	45°37'42.62" N 009°55'03.31" E
ME542	45°39'30.05" N 009°45'29.72" E