

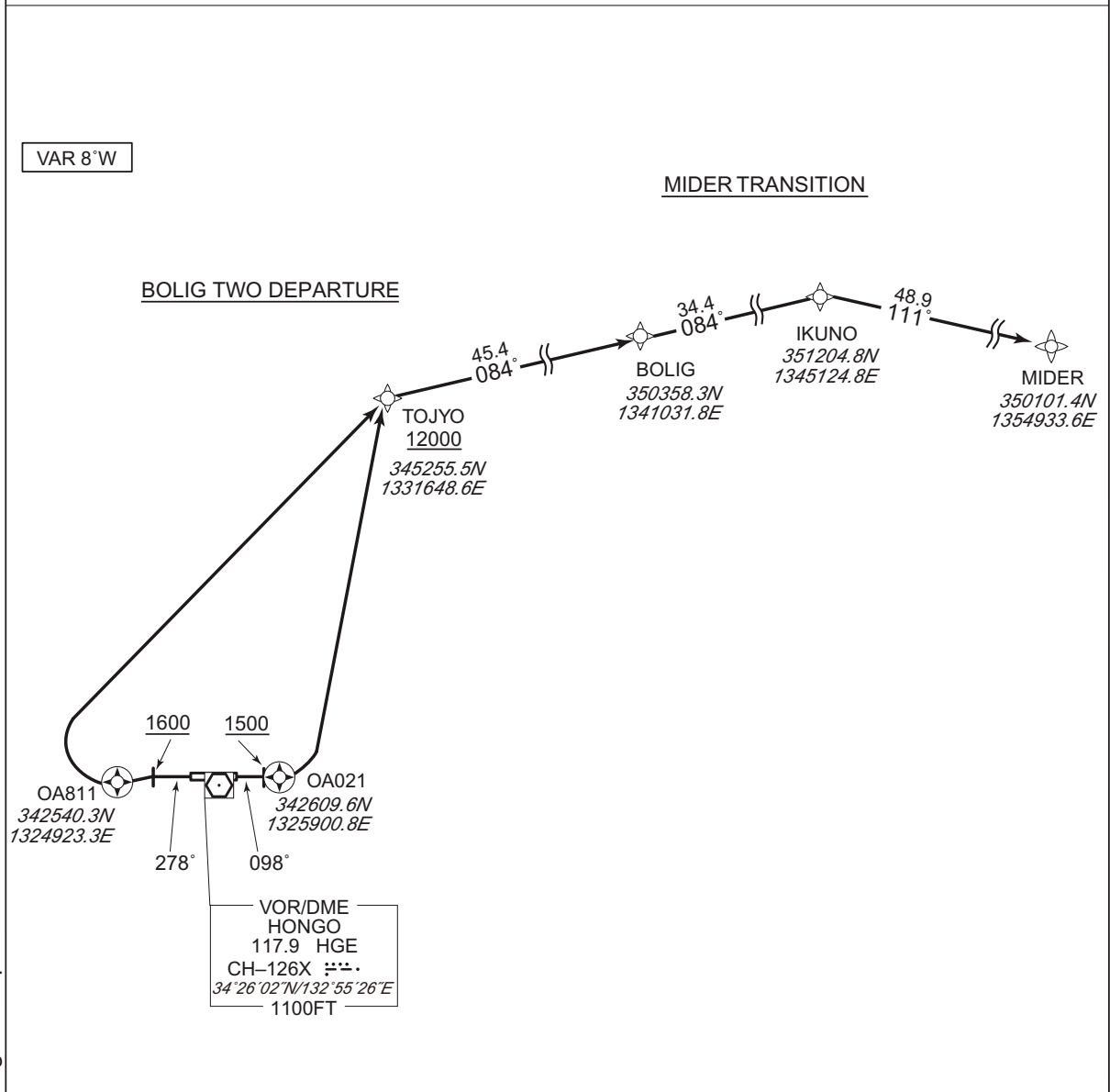
STANDARD DEPARTURE CHART - INSTRUMENT

RJOA / HIROSHIMA RNAV SID and TRANSITION

BOLIG TWO DEPARTURE MIDER TRANSITION	RNP1
---	------

Note GNSS required.

VAR 8°W



CHANGE : PROC renamed. Note. Navigation Specification.

BOLIG TWO DEPARTURE

- RWY10 : Climb on HDG098° at or above 1500FT, direct to OA021, turn left direct to TOJYO at or above 12000FT, to BOLIG.
- RWY28 : Climb on HDG278° at or above 1600FT, direct to OA811, turn right direct to TOJYO at or above 12000FT, to BOLIG.
- NOTE RWY10 : 5.0% climb gradient required up to 1600FT.
OBST ALT 2090FT located at 5.74NM 087° FM end of RWY10.
- RWY28 : 3.6% climb gradient required up to 2700FT.
OBST ALT 2570FT located at 7.71NM 337° FM end of RWY28.

MIDER TRANSITION

From BOLIG, to IKUNO, to MIDER.

STANDARD DEPARTURE CHART - INSTRUMENT

RJOA / HIROSHIMA

RNAV SID and TRANSITION

BOLIG TWO DEPARTURE

RWY10

Serial Number	Path Descriptor	Waypoint Identifier	Fly Over	Course °M(°T)	Magnetic Variation	Distance (NM)	Turn Direction	Altitude (FT)	Speed (KIAS)	Vertical Angle	Navigation Specification
001	VA	–	–	098 (090.0)	-8.2	–	–	+1500	–	–	RNP1
002	DF	OA021	Y	–	-8.2	–	–	–	–	–	RNP1
003	DF	TOJYO	–	–	-8.2	–	L	+12000	–	–	RNP1
004	TF	BOLIG	–	084 (075.7)	-8.2	45.4	–	–	–	–	RNP1

RWY28

Serial Number	Path Descriptor	Waypoint Identifier	Fly Over	Course °M(°T)	Magnetic Variation	Distance (NM)	Turn Direction	Altitude (FT)	Speed (KIAS)	Vertical Angle	Navigation Specification
001	VA	–	–	278 (270.0)	-8.2	–	–	+1600	–	–	RNP1
002	DF	OA811	Y	–	-8.2	–	–	–	–	–	RNP1
003	DF	TOJYO	–	–	-8.2	–	R	+12000	–	–	RNP1
004	TF	BOLIG	–	084 (075.7)	-8.2	45.4	–	–	–	–	RNP1

MIDER TRANSITION

Serial Number	Path Descriptor	Waypoint Identifier	Fly Over	Course °M(°T)	Magnetic Variation	Distance (NM)	Turn Direction	Altitude (FT)	Speed (KIAS)	Vertical Angle	Navigation Specification
001	IF	BOLIG	–	–	-8.2	–	–	–	–	–	RNP1
002	TF	IKUNO	–	084 (076.2)	-8.2	34.4	–	–	–	–	RNP1
003	TF	MIDER	–	111 (102.8)	-8.2	48.9	–	–	–	–	RNP1

CHANGE : PROC renamed. Navigation Specification.