

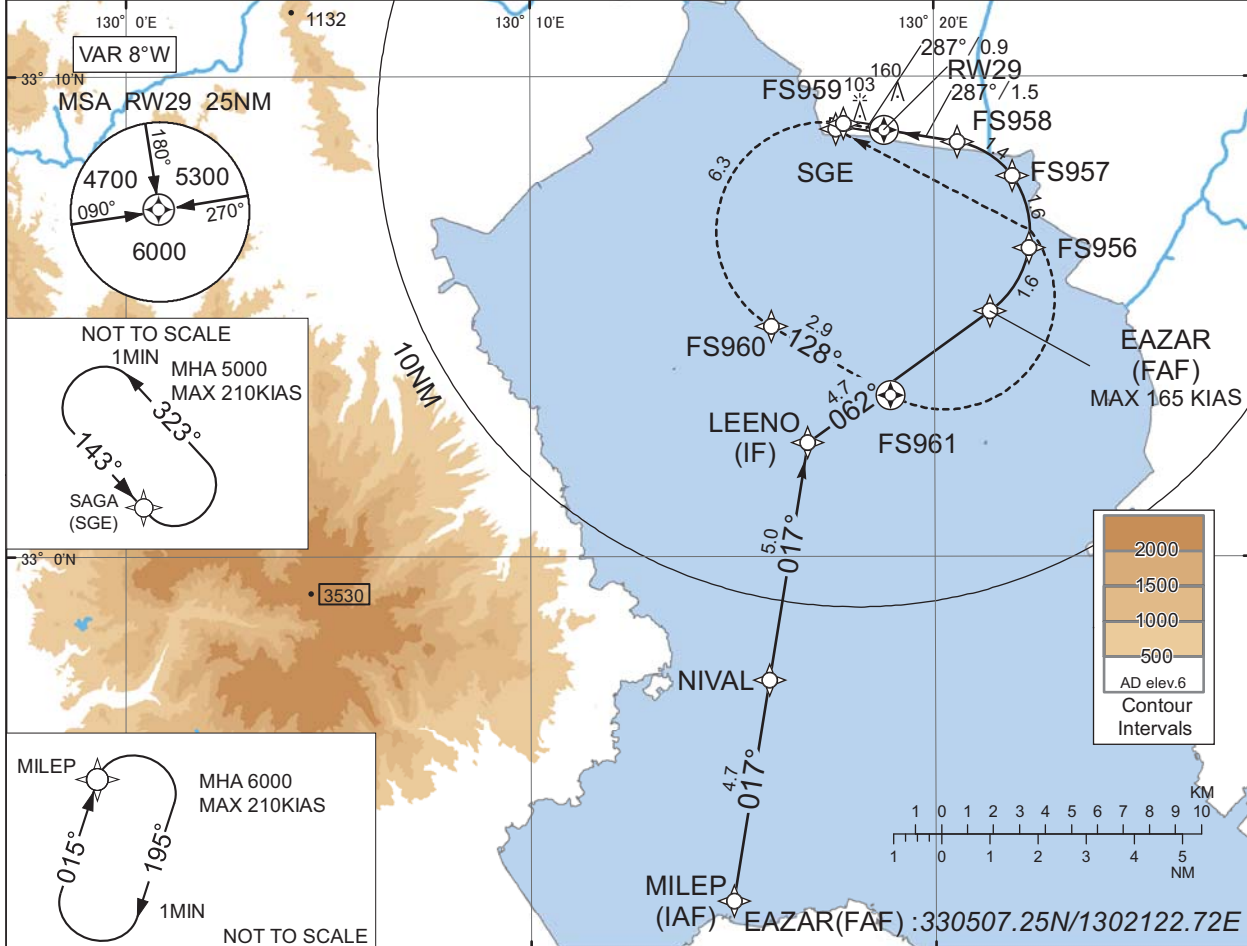
INSTRUMENT APPROACH CHART

RJFS / SAGA

RNP RWY29(AR)

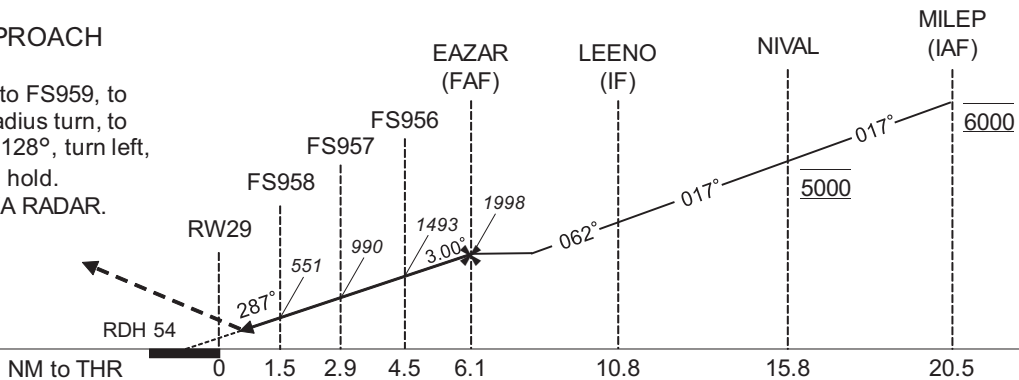
FUKUOKA RADAR 119.7 - 279.2	RNP AR RF required.	SAGA RADIO 118.025 - 126.2	2130 - 2300(UTC) 1030 - 1500(UTC) 118.025 AFIS provided by Fukuoka Airport Office	NO RADAR
--------------------------------	------------------------	-------------------------------	---	----------

For uncompensated Baro-VNAV systems, procedure not authorized below -10°C / above 45°C



MISSED APPROACH

Climb to 5000FT, to FS959, to FS960 via fixed radius turn, to FS961 on course 128°, turn left, direct to SGE and hold. Contact FUKUOKA RADAR.



Missed APCH climb gradient MNM 5.0%

CAT	RNP 0.10		RNP 0.30	
	DA(H)	RVR/CMV	DA(H)	RVR/CMV
A	-	-	-	-
B	-	-	-	-
C	256(250)	800	306(300)	1000
D		1200		1400

Authorization Required

MINIMA with Missed APCH climb gradient of 2.5% are not established.

CHANGE : Missed APCH Course.

INSTRUMENT APPROACH CHART

RJFS / SAGA

RNP RWY29(AR)

CHANGE : Waypoint (FS959, FS960, FS961) established. RF Arc Center (FSRF2) established. RNP Value. HLDG pattern added. Waypoint (FS955) abolished. VAR.

Coding Table											
Serial Number	Path Descriptor	Waypoint Identifier	Fly Over	Course °M(°T)	Magnetic Variation	Distance (NM)	Turn Direction	Altitude (FT)	Speed (KIAS)	VPA/RDH (°/FT)	RNP Value
001	IF	MILEP	-	-	-7.9	-	-	6000	-	-	-
002	TF	NIVAL	-	017 (009.2)	-7.9	4.7	-	5000	-	-	0.3
003	TF	LEENO	-	017 (009.2)	-7.9	5.0	-	-	-	-	0.3
004	TF	EAZAR	-	062 (054.2)	-7.9	4.7	-	1998	-165	-	0.3
005	RF Center: FSRF8 r=2.02NM	FS956	-	-	-7.9	1.6	L	1493	-	-3.00	0.10 0.30
006	RF Center: FSRF9 r=1.98NM	FS957	-	-	-7.9	1.6	L	990	-	-3.00	0.10 0.30
007	RF Center: FSRF0 r=1.75NM	FS958	-	-	-7.9	1.4	L	551	-	-3.00	0.10 0.30
008	TF	RW29	Y	287 (279.3)	-7.9	1.5	-	60	-	-3.00/54	0.10 0.30
009	TF	FS959	-	287 (279.3)	-7.9	0.9	-	-	-	-	0.10 0.30
010	RF Center: FSRF2 r=2.28NM	FS960	-	-	-7.9	6.3	L	-	-	-	1.0
011	CF	FS961	Y	128 (120.3)	-7.9	2.9	-	-	-	-	1.0
012	DF	SGE	-	-	-7.9	-	L	5000	-	-	1.0

Path	Waypoint Identifier	Inbound Course °M(°T)	Magnetic Variation	Outbound Time (MIN)	Turn Direction	Minimum Altitude (FT)	Maximum Altitude (FT)	Speed (KIAS)	RNP Value
Hold	MILEP	015 (007.6)	-7.9	1.0(-14000)	R	6000	FL140	-210 (-14000)	1.0
Hold	SGE	143 (134.8)	-7.9	1.0(-14000)	L	5000	FL140	-210 (-14000)	1.0

Waypoint Coordinates			
Waypoint Identifier	Coordinates	RF Arc Center Identifier	Coordinates
MILEP	325250.49N / 1301501.22E	FSRF8	330645.72N / 1301958.78E
NIVAL	325726.55N / 1301554.33E	FSRF9	330646.63N / 1302001.15E
LEENO	330223.31N / 1301651.53E	FSRF0	330654.73N / 1302014.52E
EAZAR	330507.25N / 1302122.72E	FSRF2	330647.02N / 1301719.68E
FS956	330626.19N / 1302220.91E		
FS957	330756.35N / 1302156.32E		
FS958	330838.87N / 1302034.72E		
RW29	330853.77N / 1301846.08E		
FS959	330902.03N / 1301745.78E		
FS960	330448.74N / 1301558.06E		
FS961	330322.31N / 1301854.74E		
SGE	330855.03N / 1301734.43E		