

INSTRUMENT APPROACH CHART

RJSM / MISAWA

LOC I-MIS 109.7	APCH CRS 283°	Rwy Idg 9999 TDZE 109 Arpt Elev 119
---------------------------	-------------------------	--

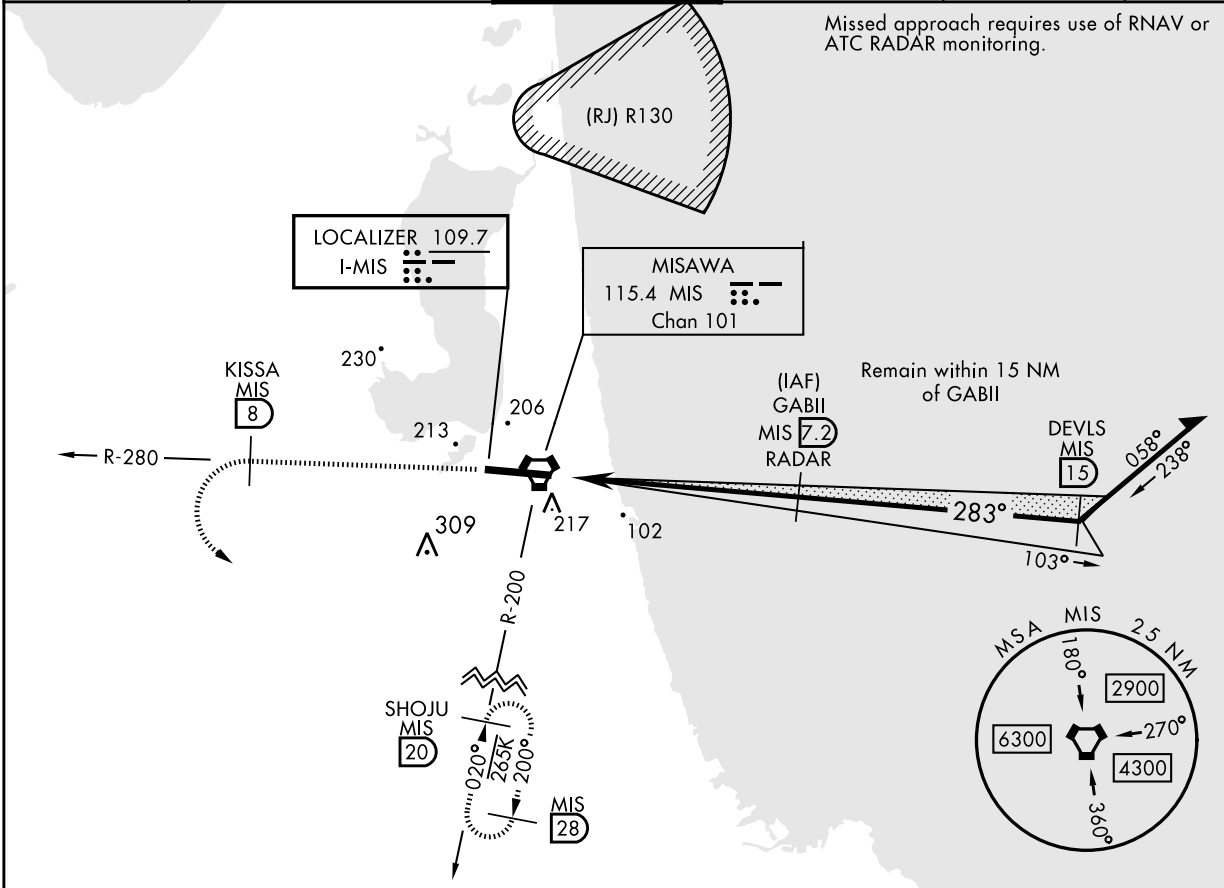
ILS Z or LOC Z RWY28

RADAR or DME required
 ▼ * When ALS inop, increase RVR to 40, vis to 3/4 mile.
 ** When ALS inop, increase RVR to 55, vis to 1 mile.
 *** Circling not authorized S of Rwy 10-28.



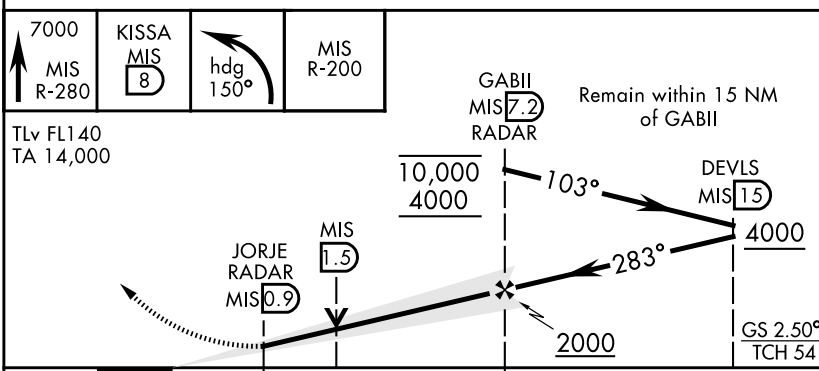
MISSED APPROACH: Climb on MIS VORTAC R-280 to KISSA, then climbing left turn heading 150° to 7000 to intercept MIS R-200 outbound to SHOJU and hold. Continue climb in holding to 7000.

ATIS ★ 128.4 315.35	APP CON 120.7 317.8	TOWER 118.1 315.8	GND CON 118.65 275.8	CLNC DEL 118.65 275.8	ASR/PAR
-------------------------------	-------------------------------	-----------------------------	--------------------------------	---------------------------------	---------

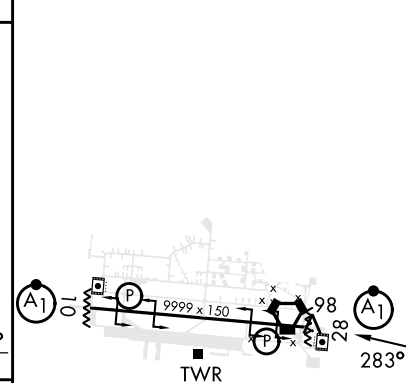


Missed approach requires use of RNAV or ATC RADAR monitoring.

EMERG SAFE ALT 100 NM 8700

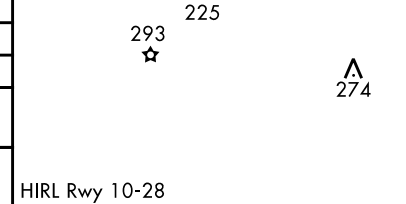


ELEV 119	TDZE 109
----------	----------



CHANGE : Update.

CATEGORY	A	B	C	D	E
S-ILS 28*	317/24		208	(200-1/2)	
S-LOC 28**	480/24 371 (400-1/2)		480/35	371	(400-5/8)
CIRCLING***	580-1 461(500-1)	600-1 481(500-1)	600-1 1/2 481(500-1 1/2)	680-2 561 (600-2)	



NOTE: REPRINTING DOD FLIP