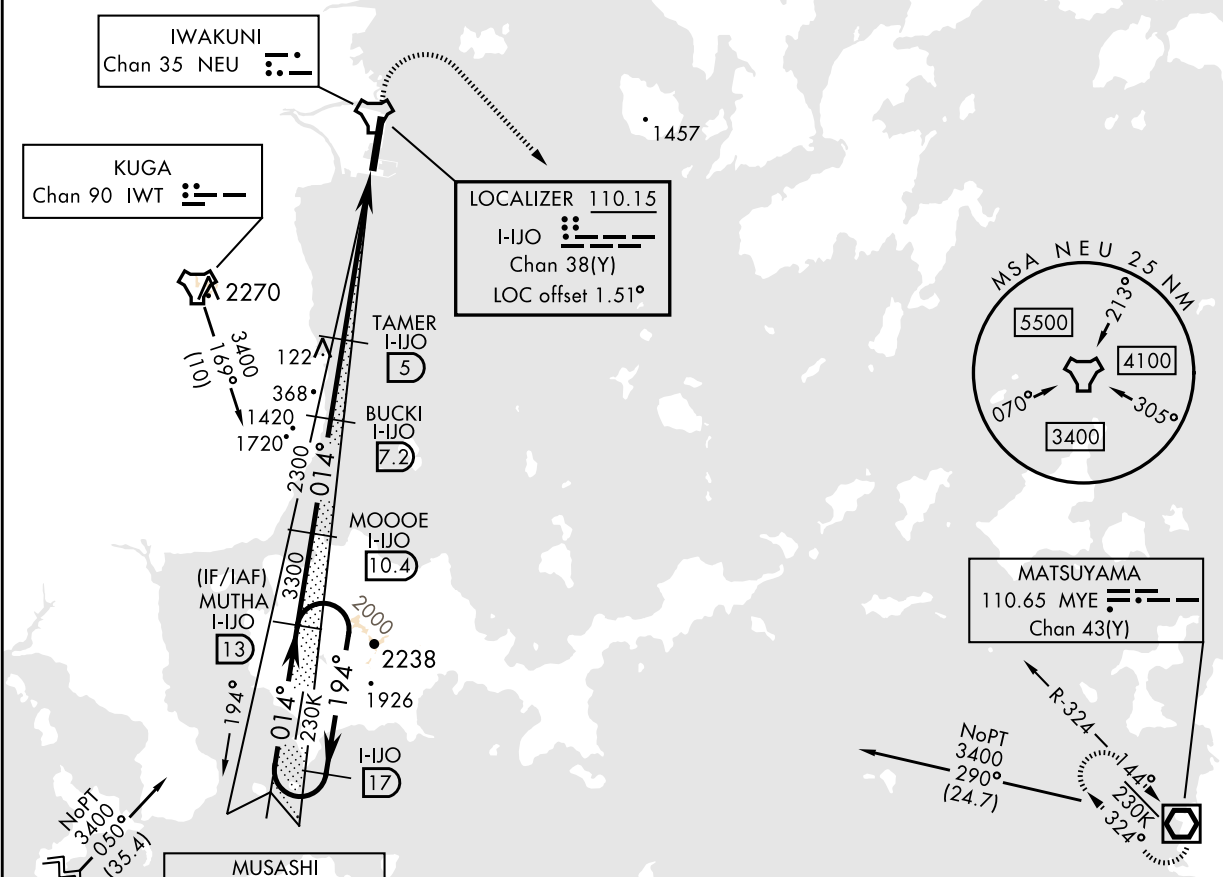


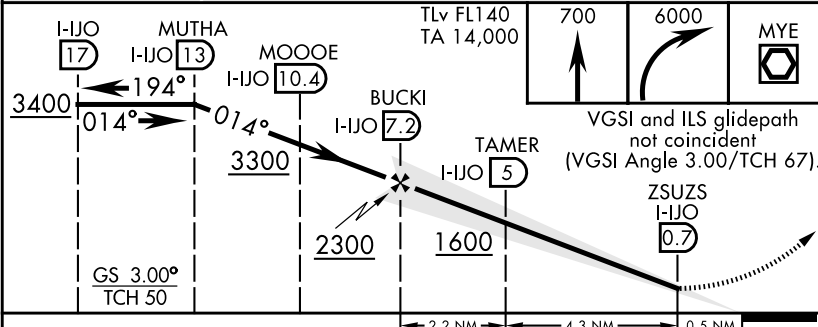
INSTRUMENT APPROACH CHART

RJOI / IWAKUNI

LOC/DME I-IJO <b>110.15</b> Chan <b>38(Y)</b>	APCH CRS <b>014°</b>	Rwy ldg <b>8007</b> TDZE <b>10</b> Arpt Elev <b>10</b>	[USN]	ILS or LOC RWY02	
RADAR or MYE VOR/DME required			ALSIF-1 	MISSED APPROACH: Climb to 700 then climbing right turn to 6000 direct MYE VOR/DME and hold.	
<p>▼ * When ALS inop, increase vis to 3/4 mile. ** When ALS inop, increase vis to 1 mile. *** Circling not authorized W of Rwy 02-20. CAT D remain within 2.8 NM.</p>					
ATIS★ <b>128.4 283.0</b>	APP CON★ <b>131.4 236.2</b>	TOWER★ <b>123.8 340.2</b>	GND CON★ <b>121.3 360.2</b>	CLNC DEL★ <b>135.7 310.6</b>	ASR/PAR

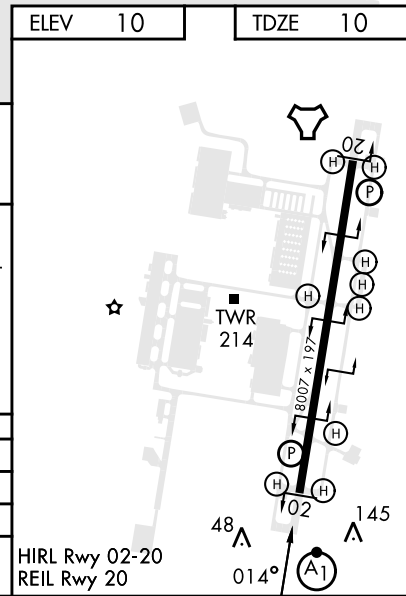


EMERG SAFE ALT 100 NM 8500



CHANGE : Update.

CATEGORY	A	B	C	D
S-ILS 02*		260-1/2	250 (300-1/2)	
S-LOC 02**	360-1/2	350 (400-1/2)	360-5/8 350 (400-5/8)	
CIRCLING***	460-1	450 (500-1)	460-1 1/2 450 (500-1 1/2)	560-2 550 (600-2)



NOTE: REPRINTING DOD FLIP