

ILS or LOC RWY 11

LOC I-DJR 109.7	APCH CRS 109°	Rwy ldg 10,002 TDZE 1069 Arprt Elev 1069	[USAF]	DOBBINS ARB (KMGE)
---------------------------	-------------------------	---	--------	--------------------

TACAN or RADAR required.

* When ALS inop, increase RVR to 55 and vis to 1 mile.
 ** When ALS inop, increase CAT AB RVR to 55 and vis to 1 mile, CAT CDE vis to 2 miles.

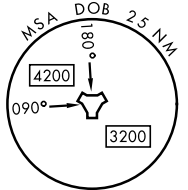
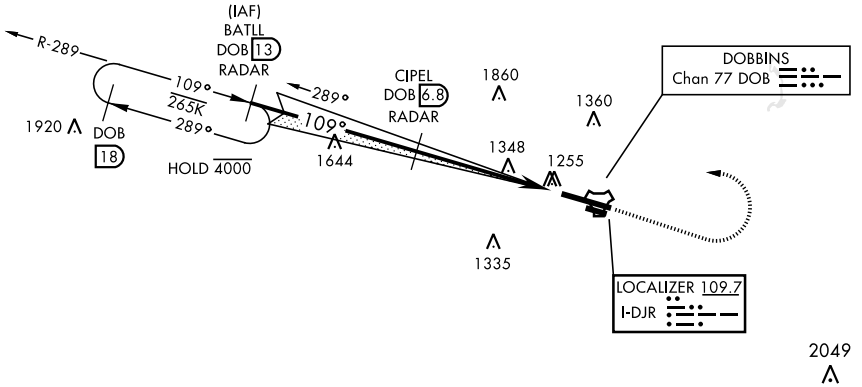
ALS-F1

† MISSED APPROACH: Climb to 2000 track 109°, then climbing left turn to 3000, intercept the DOB TACAN R-289 to BATLL and hold.

ATIS ★ 269.5	ATLANTA APP CON 121.0 268.7	TOWER ★ 120.75 370.875	GND CON 125.3 275.8	ASR
------------------------	---------------------------------------	----------------------------------	-------------------------------	-----

*** Circling not authorized N of Rwy 11-29 for CAT DE aircraft, Circling to assault strip not authorized.

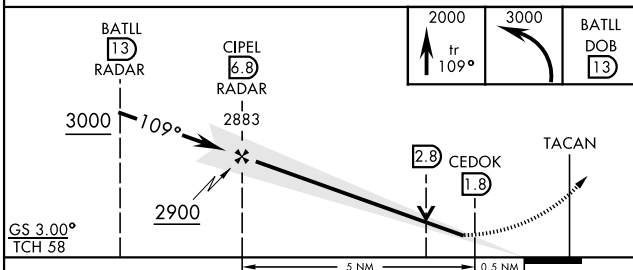
† Missed approach requires use of RNAV or ATC RADAR monitoring.



SE-4, 20 MAR 2025 to 17 APR 2025

SE-4, 20 MAR 2025 to 17 APR 2025

EMERG SAFE ALT 100 NM 7800



ELEV 1069	TDZE 1069
HIRL Rwy 11-29	
REIL Rwy 11 and 29	
FAF to MAP 5 NM	
Knots	60 90 120 150 180
Min:Sec	5:00 3:20 2:30 2:00 1:40

CATEGORY	A	B	C	D	E
S-ILS 11*	1431/40		362	(400-¾)	
S-LOC 11**	1600/40	531 (600-¾)	1600/55	531	(600-1)
*** CIRCLING	1600-1	1620-1	1760-2	1760-2¼	1760-2½
	531 (600-1)	551 (600-1)	691 (700-2)	691 (700-2¼)	691 (700-2½)

ILS or LOC RWY 11