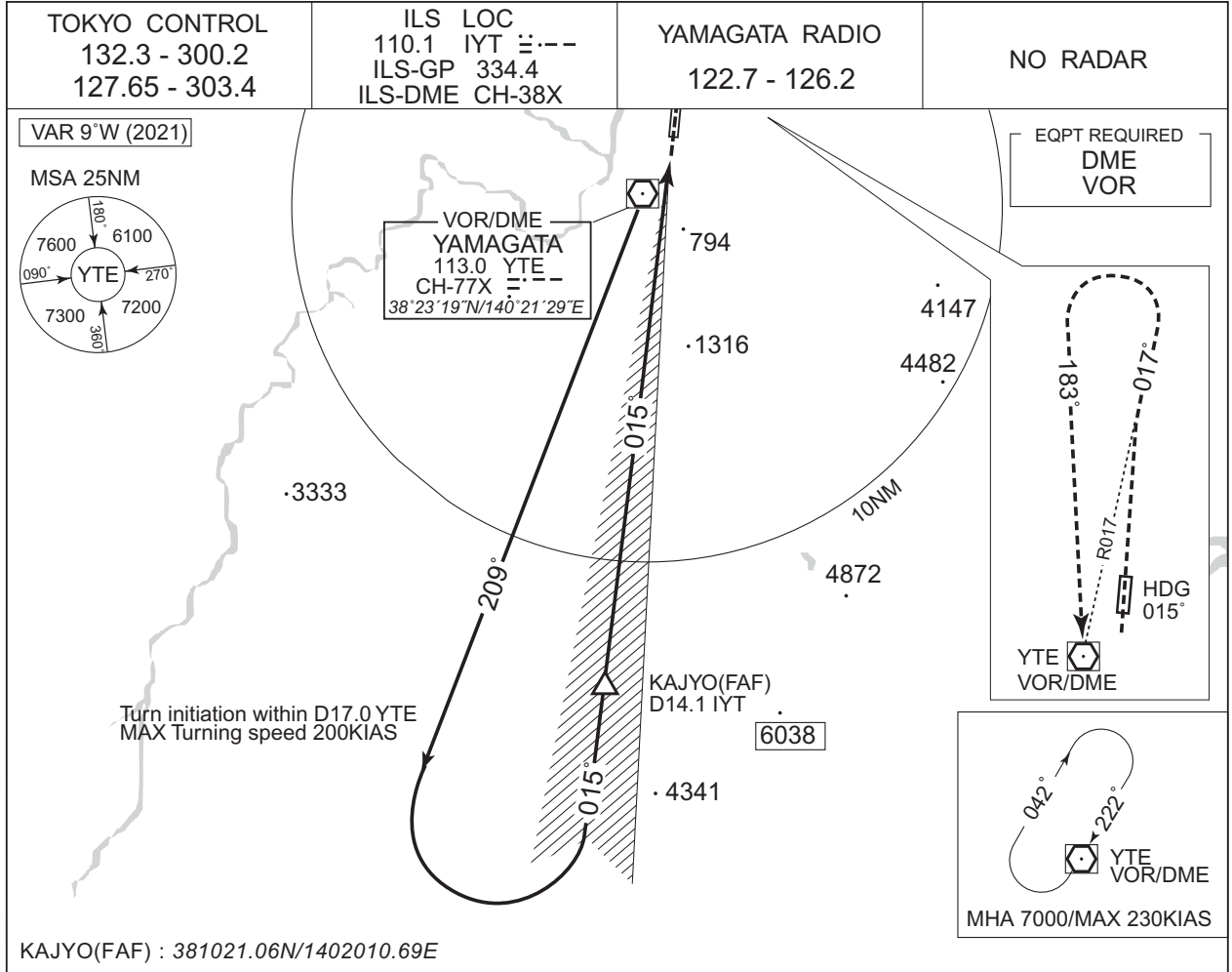


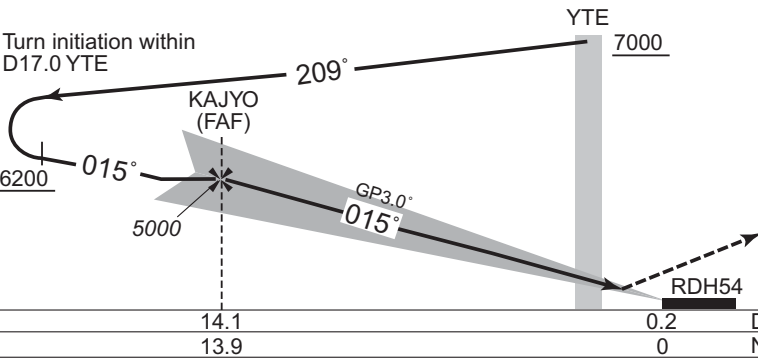
INSTRUMENT APPROACH CHART

RJSC / YAMAGATA

ILS Y RWY01



KAJYO(FAF) : 381021.06N/1402010.69E



**MISSED APPROACH**  
Climb to 2000FT on HDG015°, via YTE R017 to 5000FT, turn left, via YTE R003 to YTE VOR/DME and hold at 7000FT.  
Contact YAMAGATA RADIO.

CHANGE : FREQ for TOKYO CONTROL.

Missed APCH climb gradient MNM 5.0%

MINIMA	THR elev. 347	AD elev. 345		
CAT	CAT I	CIRCLING		
	DA(H)	RVR/CMV		
A	547 (200)	550	MDA(H)	1600
B			790 (445)	
C			800 (455)	2400
D			900 (555)	3200

MINIMA with Missed APCH climb gradient of 2.5% are not established. Circling to WEST side of RWY only.