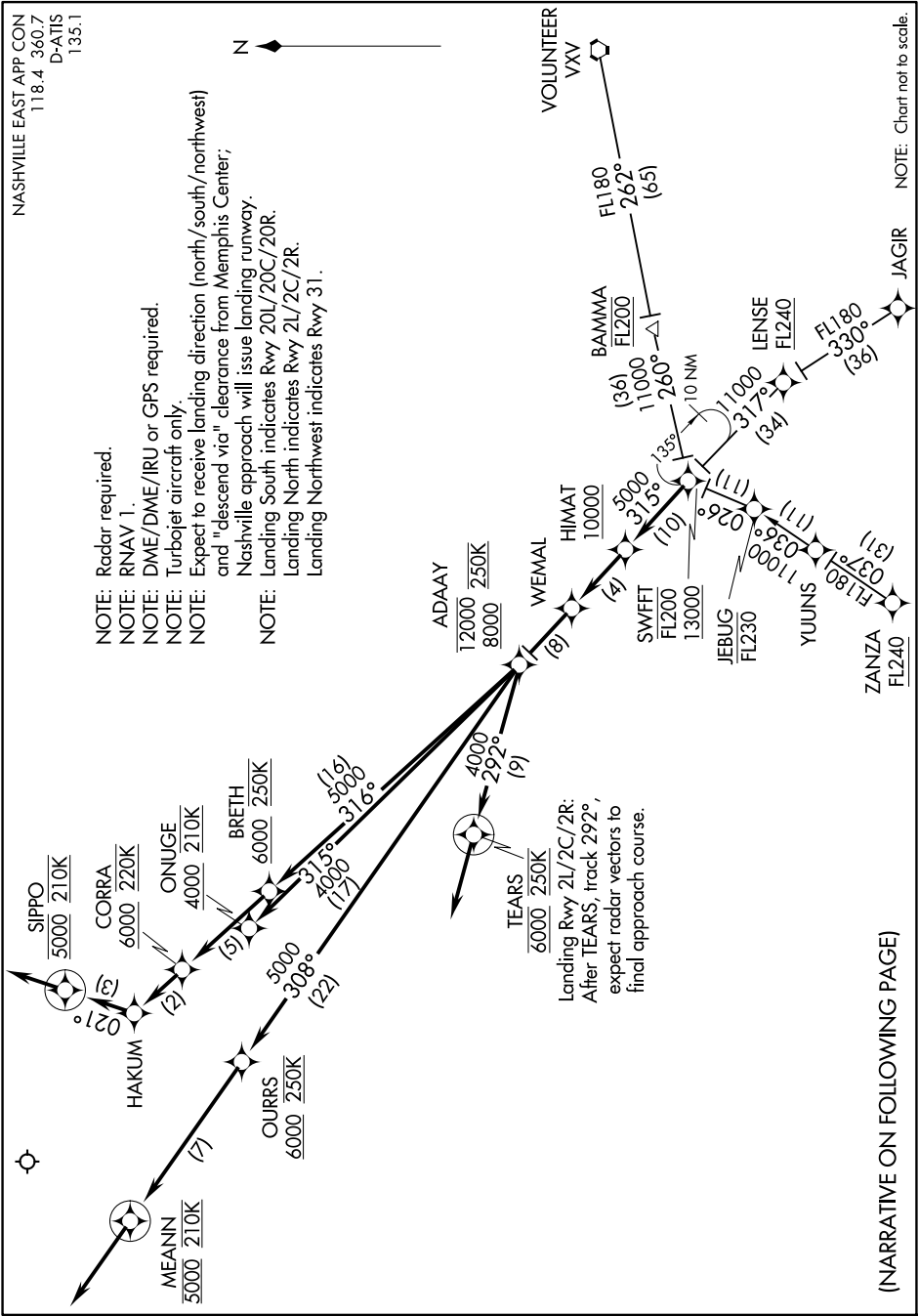


SWFFT TWO ARRIVAL (RNAV)

SE-1, 20 MAR 2025 to 17 APR 2025



NOTE: Radar required.
 NOTE: RNAV 1.
 NOTE: DME/DME/IRU or GPS required.
 NOTE: Turbojet aircraft only.
 NOTE: Expect to receive landing direction (north/south/northwest) and "descend via" clearance from Memphis Center; Nashville approach will issue landing runway.
 NOTE: Landing South indicates Rwy 20L/20C/20R.
 NOTE: Landing North indicates Rwy 21L/21C/21R.
 NOTE: Landing Northwest indicates Rwy 31.

Landing Rwy 2L/2C/2R:
 After TEARS, track 292°, expect radar vectors to final approach course.

(NARRATIVE ON FOLLOWING PAGE)

NOTE: Chart not to scale.

SE-1, 20 MAR 2025 to 17 APR 2025

SWFFT TWO ARRIVAL (RNAV)