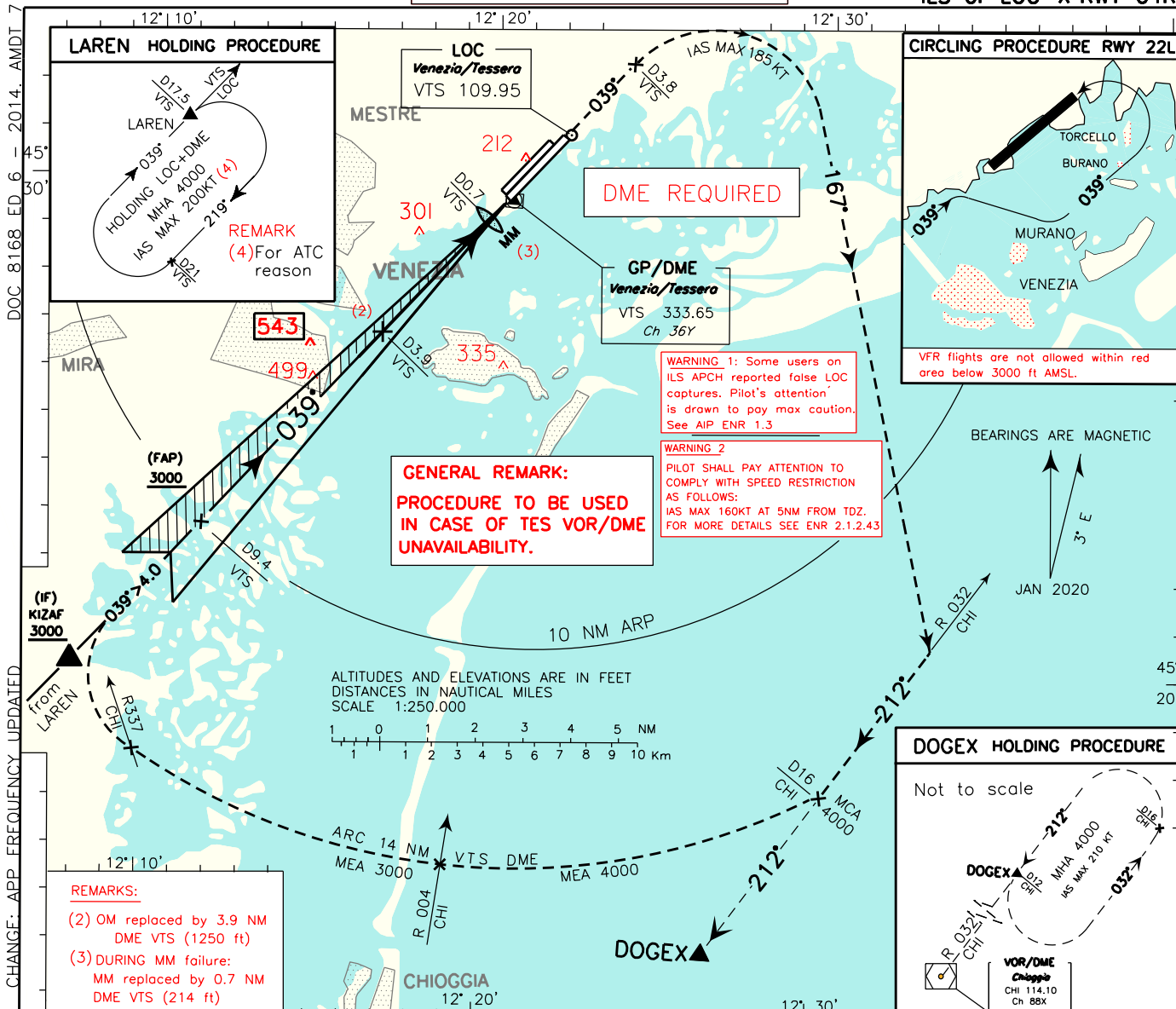


INSTRUMENT APPROACH CHART - ICAO
AERODROME ELEV 7
APP Padova Radar 118.900 (134.750)
TWR Venezia TWR 120.200 (118.255)
ATIS Venice Arrival and Departure Information 128.655

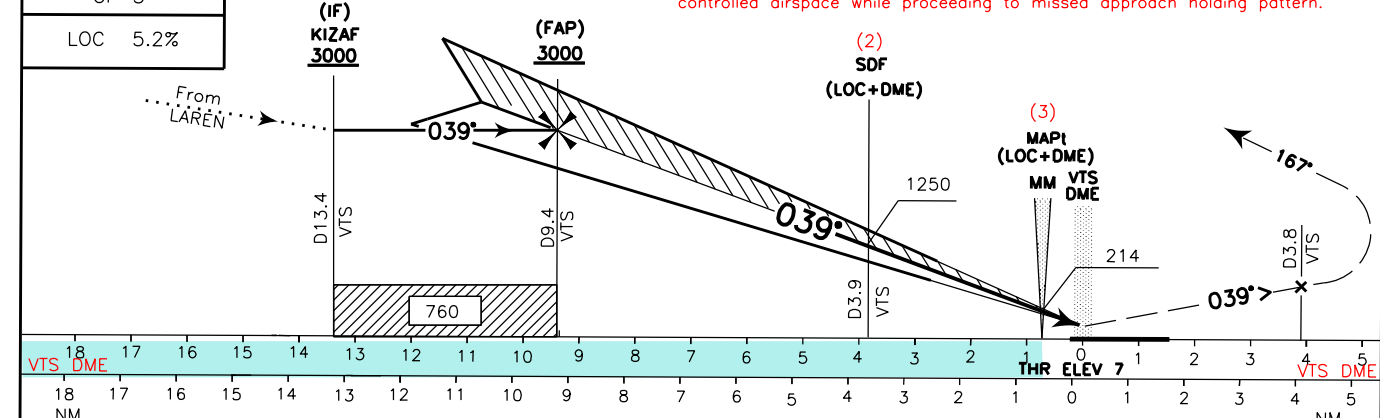
VENEZIA/TESSERA LIPZ
ILS or LOC-X RWY 04R



TRANSITION ALT 6000
 RDH 15.55 M
 GP 3°
 LOC 5.2%

MISSED APPROACH: Proceed on TR 039° until 3.8 NM VTS DME climbing to 4000 ft, then turn right on TR 167° (IAS MAX 185 kt) to intercept and follow RDL 032 CHI VOR (TR 212°).
 Hold between 12 NM and 16 NM CHI DME; inbound TR 212° (IAS MAX 210 kt), left turns.

REMARK: (4) Missed approach obstacles clearance is provided by 2.5% gradient. 5.0% (300ft/NM) is required to remain inside vertical limits of controlled airspace while proceeding to missed approach holding pattern.



STRAIGHT IN APPROACH	OCA(OCH)				REMARK: (1) Circling procedure allowed south of RWY 22L as shown in the inset on the plan view.	FT PER MIN	GS	D3.9VTS-MM	MM-THR	VTS DME	ALT (HGT)	MNM SECT ALT	
	A	B	C	D								25NM	ARP
ILS CAT I	184(177)	196(189)	204(197)	215(208)		530	100	1:57	0:18	5 NM	1596(1589)	7200	
	67 (60)	77 (70)	92 (85)	107(100)		640	120	1:37	0:15	4 NM	1277(1270)		
	LOC+DME 450 (443)					745	140	1:23	0:13	3 NM	958 (951)		
CIRCLING (1)	580 (573)	600 (593)	730 (723)	950 (943)		850	160	1:13	0:11	2 NM	639 (632)		
						955	180	1:05	0:10	1 NM	320 (313)		