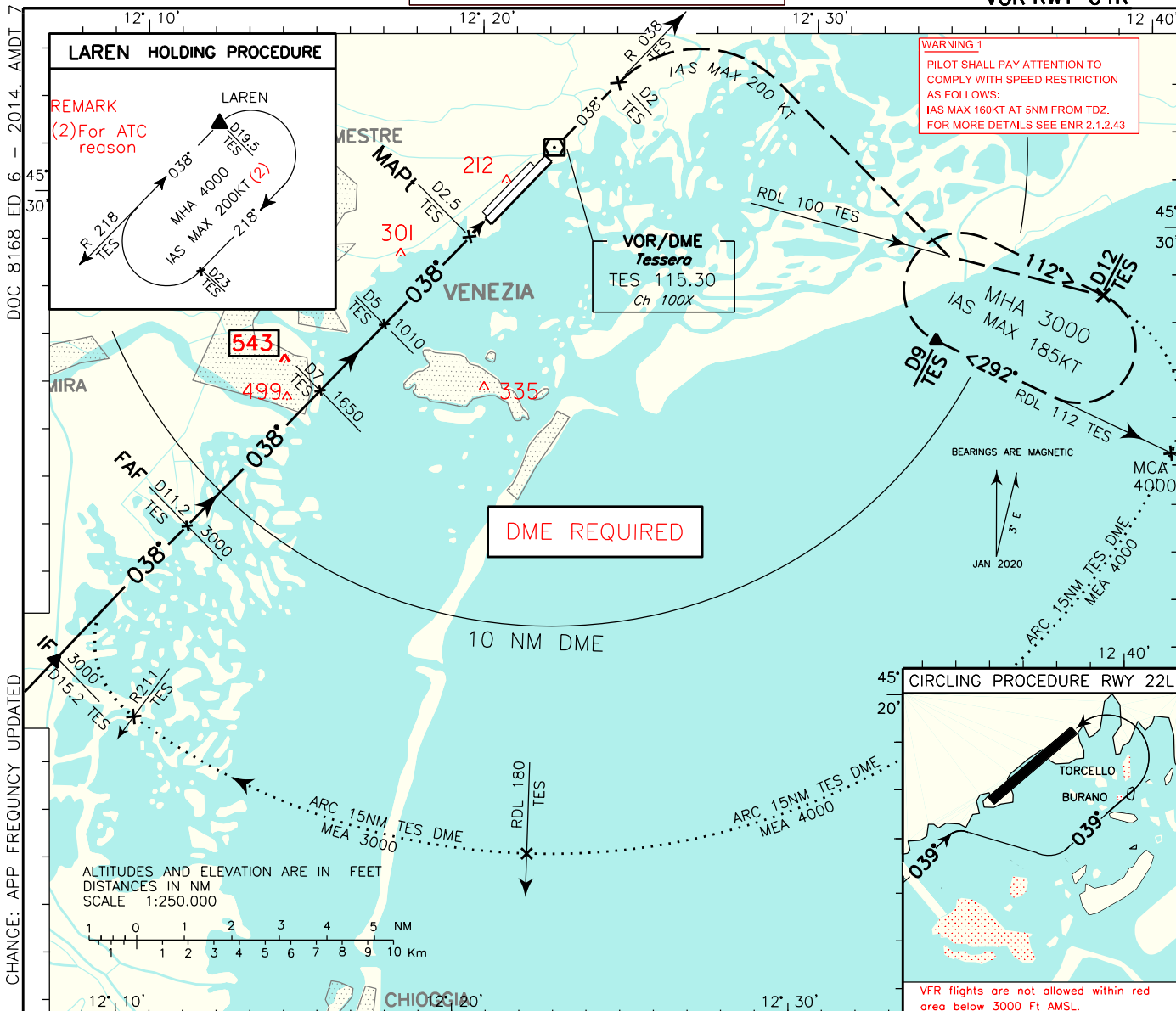


**INSTRUMENT APPROACH CHART - ICAO**

**AERODROME ELEV 7**

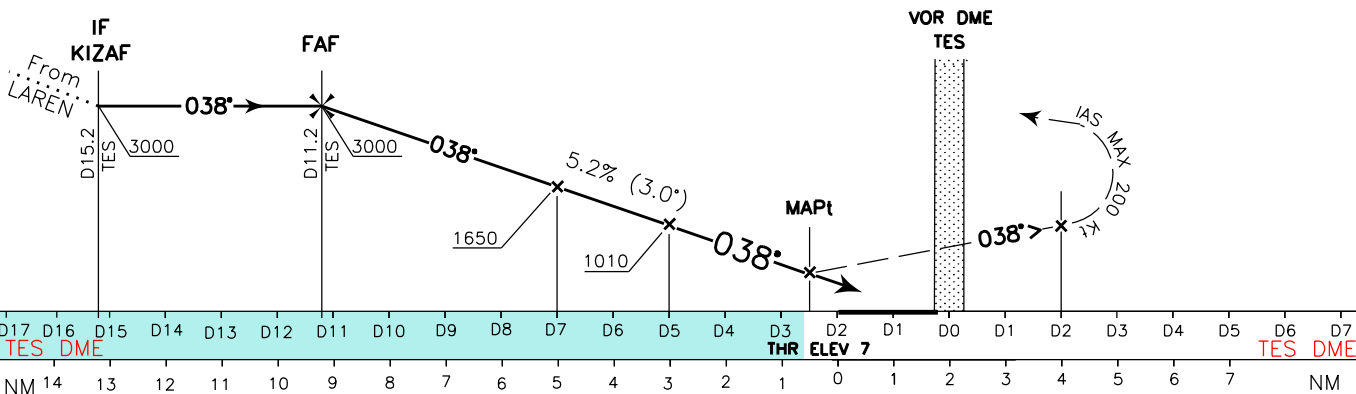
**APP** Padova Radar **118.900 (134.750)**  
**TWR** Venezia TWR **120.200 (118.255)**  
**ATIS** Venice Arrival and Departure Information **128.655**

**VENEZIA/TESSERA**  
**LIPZ**  
**VOR RWY 04R**



TRANSITION ALT 6000

**MISSED APPROACH:** Proceed on TR 038° until 2 NM TES DME climbing to 3000 ft, then turn right, with IAS MAX 200 kt, to intercept and follow RDL 100 TES VOR until point RDL 100/12 NM TES VOR/DME to join missed approach holding pattern. Hold between 9 NM and 12 NM TES DME, inbound TR 292°(RDL 112 TES VOR), right turns, IAS MAX 185 kt.



OCA(OCH)		A	B	C	D
STRAIGHT IN APPROACH	VOR+DME	550 (543)			
	CIRCLING (1)	580 (573)	600 (593)	730 (723)	950 (943)

**REMARK:**  
 (1) Circling procedure allowed SOUTH of RWY and only for RWY 22L as shown in the inset on the plan view.

GS	FT PER MIN	FAF-MAP 8.7 NM	DIST TES DME	ALT (HGT)
100	530	5:13	8 NM	1965(1958)
120	640	4:21	7 NM	1650(1643)
140	745	3:44	6 NM	1330(1323)
160	850	3:16	5 NM	1010(1003)
180	955	2:54	4 NM	695(688)

