

**TERPS
 INSTRUMENT DEPARTURE CHART**

AD ELEV 140

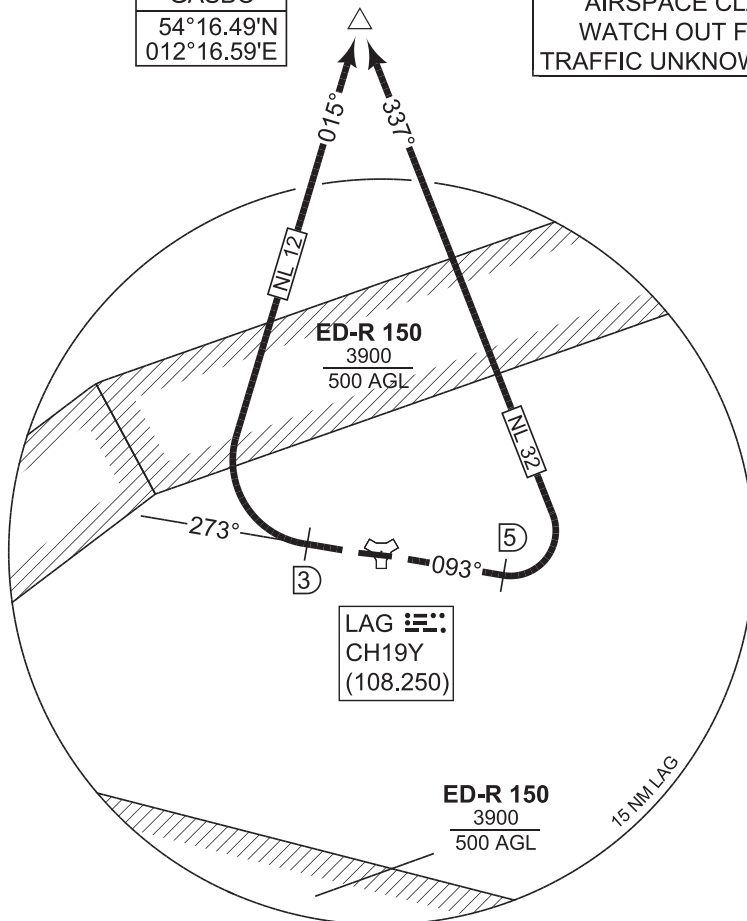
**NL 12 - 32
 LAAGE (ETNL)**

LAAGE TOWER 336.400 118.430	LAAGE RADAR 376.400 133.105	BREMEN RADAR 259.825 124.175	LAAGE ATIS 134.605
	RWY	Knots	60 120 180 240 300 360 to
	27	V/V (fpm)	270 540 810 1080 1350 1620 1420 ft
	09	V/V (fpm)	230 460 690 820 1050 1280 1800 ft

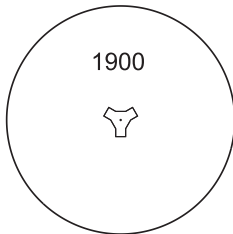


GASBO
 54°16.49'N
 012°16.59'E

IFR PROFILES WITHIN
 AIRSPACE CLASS "E"
 WATCH OUT FOR VFR
 TRAFFIC UNKNOWN TO ATC.



MSA LAG 25 NM



EMERG SAFE ALT 100 NM 3500

TA 5000

CHANGE: VAR (376/23)

NL 12
 (RWY 27)

- Climb on track 273° to LAG/3 DME
- Turn right and proceed on track 015° to GASBO
- INITIAL CLIMB: 4000 ft

NL 32
 (RWY 09)

- Climb on track 093° to LAG/5 DME
- Turn left and proceed on track 337° to GASBO
- INITIAL CLIMB: 4000 ft

ZentLufOp 28 DEC 2023

NL 12 - 32

53°55.09'N
 012°16 76'E

LAAGE (ETNL)