

VORTAC RMG <b>115.4</b> Chan 101	APP CRS <b>108°</b>	Rwy ldg <b>5233</b> TDZE <b>1028</b> Apt Elev <b>1040</b>
--	------------------------	---

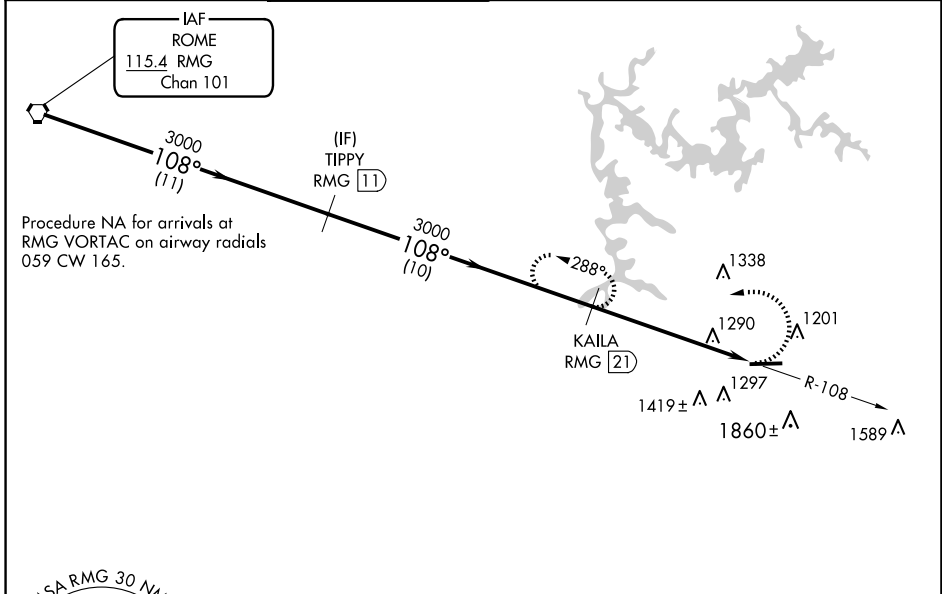
# VOR/DME RWY 9

COBB COUNTY INTL/MCCOLLUM FLD (RYY)

**⚠** Rwy 9 helicopter visibility reduction below 1 SM NA. When local altimeter setting not received, use ATL altimeter setting and increase all MDAs 60 feet and S-9 Cat A/C/D visibilities ¼ mile.

**MISSED APPROACH:** Climbing left turn to 3000 via heading 240° and RMG R-108 to KAILA/21 DME and hold.

ATIS <b>128.125</b>	ATLANTA APP CON <b>121.0 268.7</b>	MCCOLLUM TOWER ★ <b>125.9 (CTAF) 0</b>	GND CON <b>119.0</b>	CLNC DEL <b>119.0</b>	CLNC DEL <b>121.0 268.7</b> (When twr closed)	UNICOM <b>122.7</b>
------------------------	---------------------------------------	---	-------------------------	--------------------------	---	------------------------

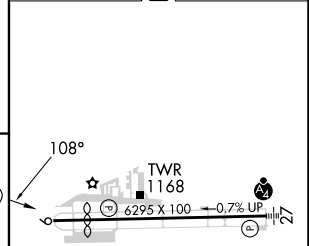
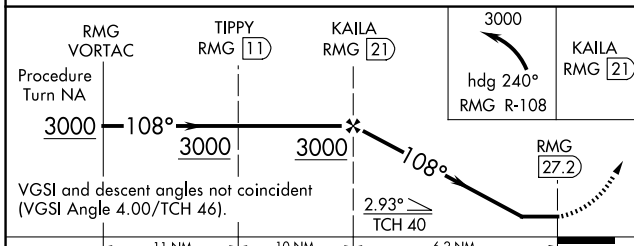


SE-4, 20 MAR 2025 to 17 APR 2025

SE-4, 20 MAR 2025 to 17 APR 2025



ELEV 1040	<b>D</b> TDZE 1028
-----------	--------------------



CATEGORY	A	B	C	D
S-9	1900-1 872 (900-1)	1900-1¼ 872 (900-1¼)	1900-2½ 872 (900-2½)	1900-2¾ 872 (900-2¾)
CIRCLING	1900-1¼	860 (900-1¼)	2220-3	1180 (1200-3)

HIRL Rwy 9-27 **0**