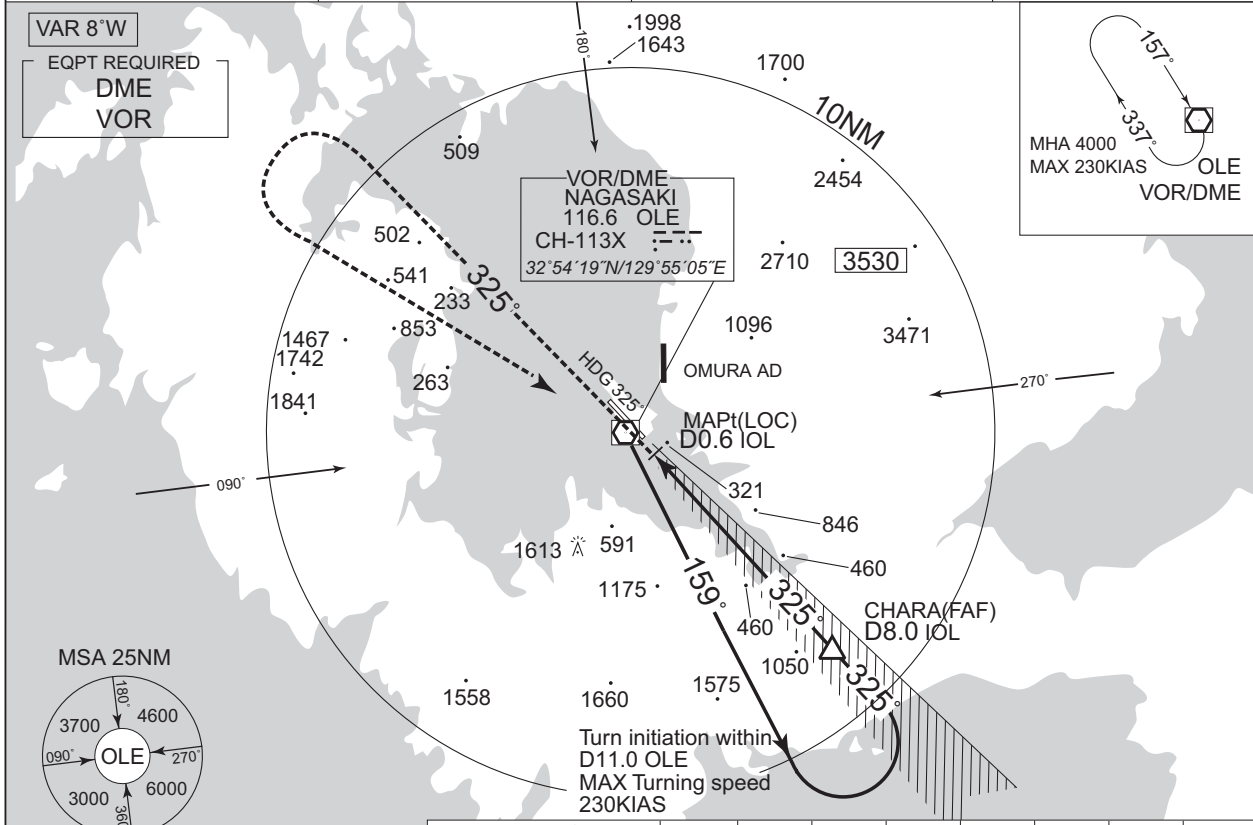


INSTRUMENT APPROACH CHART

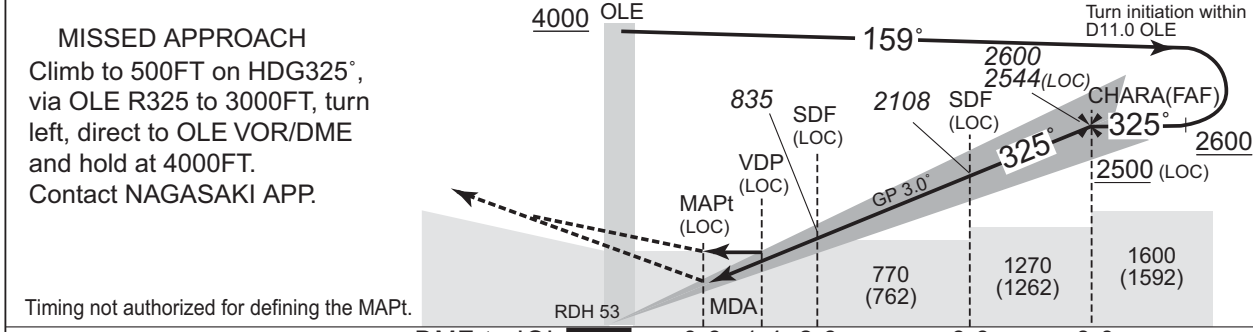
RJFU / NAGASAKI

ILS Y or LOC Y RWY32

<p>NAGASAKI APP 119.175 - 121.025 261.2</p>	<p>ILS-LOC 110.9 IOL ILS-GP 330.8 ILS-DME CH-46X</p>	<p>NAGASAKI TOWER 118.5 - 126.2 122.7 - 236.8 <small>( 2200 - 2245(UTC) 1215 - 1300(UTC) NAGASAKI RADIO 118.5 AFIS provided by Fukuoka Airport Office )</small></p>	<p>RADAR AVBL ATIS 126.85</p>
---	--	---	-----------------------------------



NM to IOL	MAPt	2	3	4	5	6	7	FAF
ALT(3.0° APCH Path)	-	648	966	1284	1602	1921	2239	2544



DME to IOL	0.2	0.6	1.4	2.6	6.6	8.0
NM to THR	0	0.5	1.2	2.4	6.4	7.8

MINIMA		THR elev. 15		AD elev. 8			
CAT	CAT I		LOC		CIRCLING		
	DA(H)	RVR/CMV	MDA(H)	RVR/CMV	MDA(H)	VIS	
A	215 (200)	550	430 (422)	900	620 (612)	1600	
B				1000			
C				1400			2400
D				890 (882)			3200

CHANGE : Description of VAR.