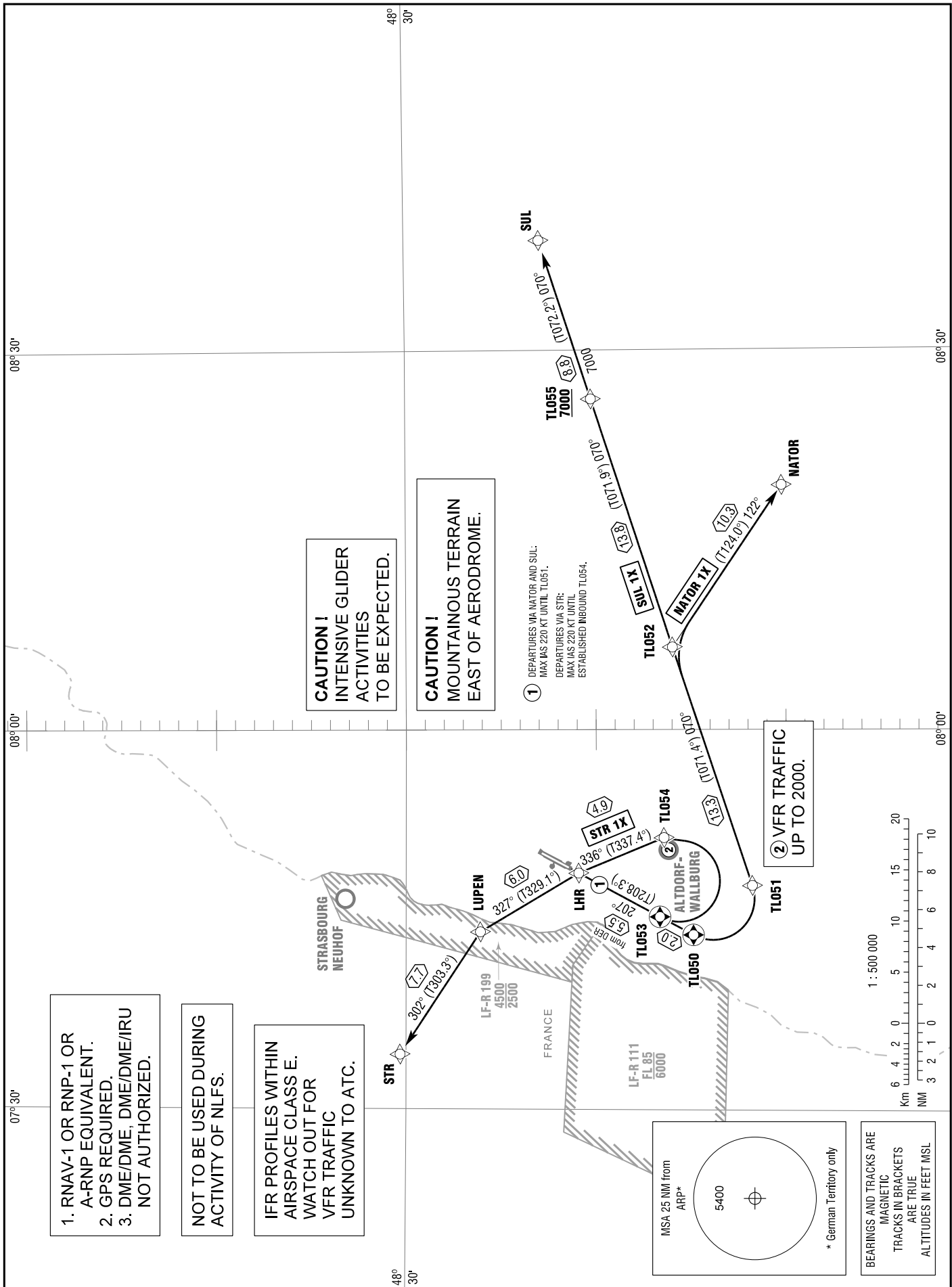


STANDARD DEPARTURE
CHART - INSTRUMENT
RNAV (GPS)

TRANSITION
ALTITUDE 5000
VAR 2°

LAHR TOWER	125.180
STRASBOURG APPROACH	119.580

LAHR
RWY 21
NATOR 1X STR 1X SUL 1X



Correction: MSA box.