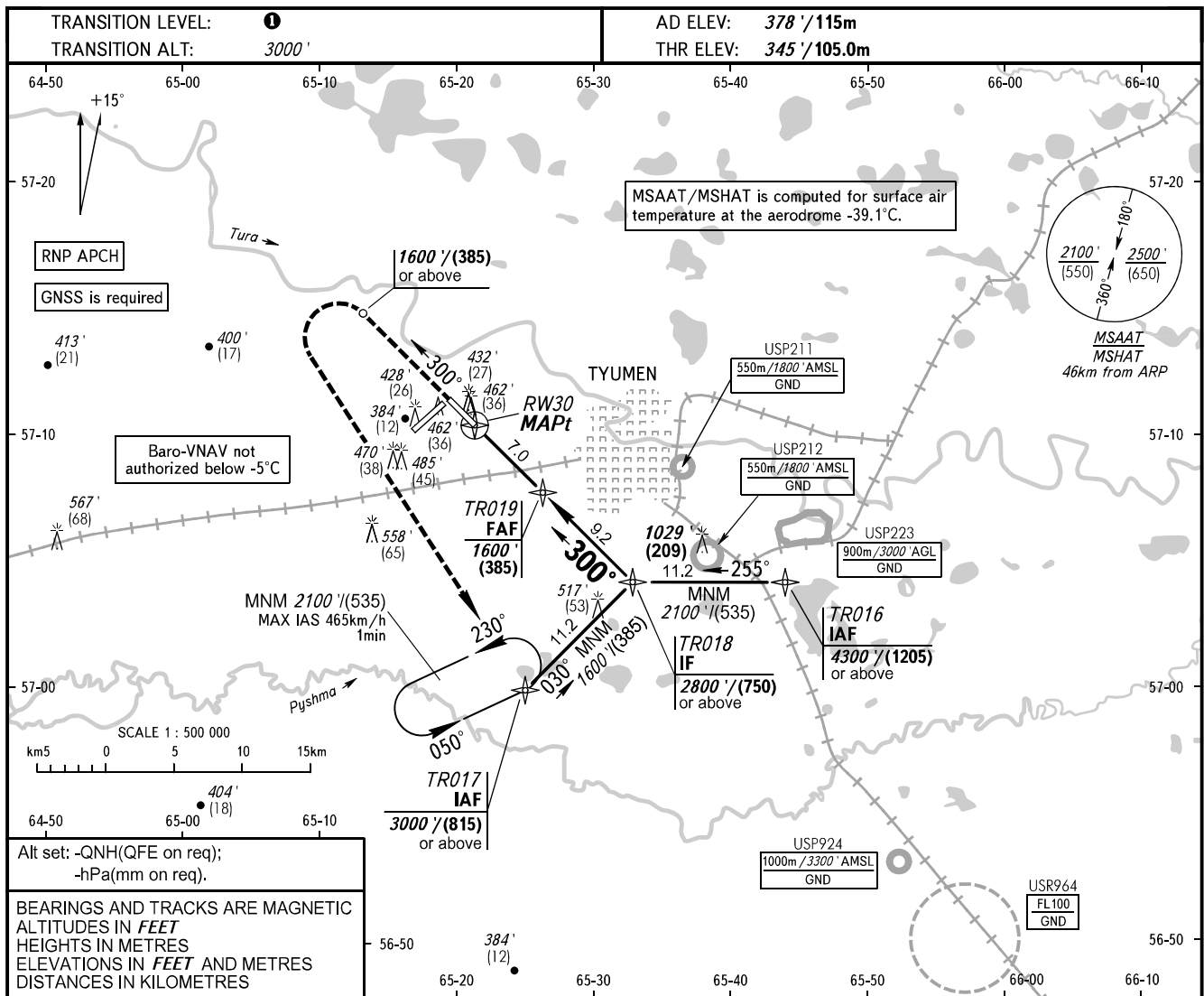


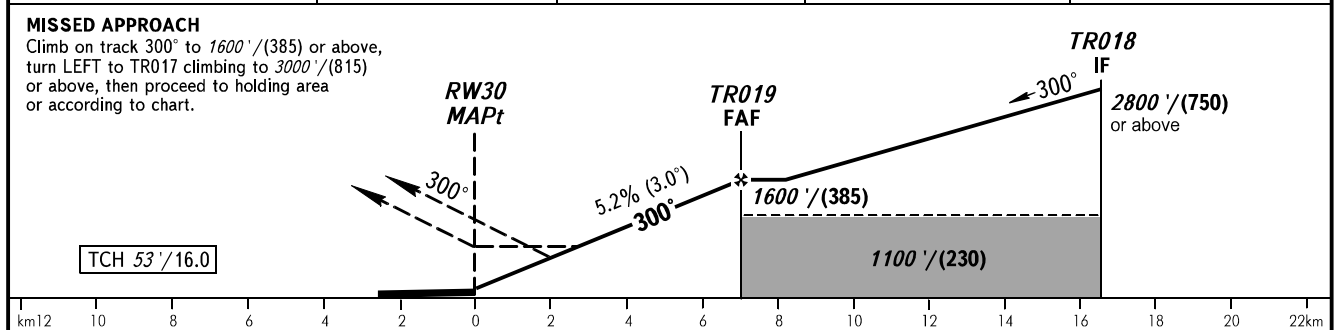
**INSTRUMENT
APPROACH
CHART - ICAO**

RADAR **126.100**
START **118.200**

TYUMEN, RUSSIA
ROSHCHINO
RNP RWY 30



DIST to RW30	2.0	4.0	6.0	7.0
ALTITUDE	740'	1080'	1420'	1600'



OCA(H)		A	B	C	D	① TRANSITION LEVEL: - FL040 when QNH is 1013 hPa (760mm mercury column) or above; - FL050 when QNH is 977 hPa (733mm mercury column) or above, but less than 1013 hPa (760mm mercury column); - FL060 when QNH is less than 977 hPa (733mm mercury column).							
Straight-in Approach	LNAV	720' (380') (115)	720' (380') (115)	720' (380') (115)	720' (380') (115)	WARNING Turn before passing MAPt is PROHIBITED.							
	LNAV/VNAV	610' (260') (85)	620' (270') (85)	630' (280') (90)	640' (290') (90)								
Circling		780' (410') (125)	870' (500') (150)	970' (600') (185)	1070' (690') (215)								
GROUND SPEED		km/h	150	180	210	240	270	300	330	360	390	420	450
RATE OF DESCENT		m/s	2.2	2.6	3.1	3.5	3.9	4.4	4.8	5.2	5.7	6.1	6.6
		ft/min	433	512	610	689	768	866	945	1024	1122	1201	1299

CHANGE: New chart