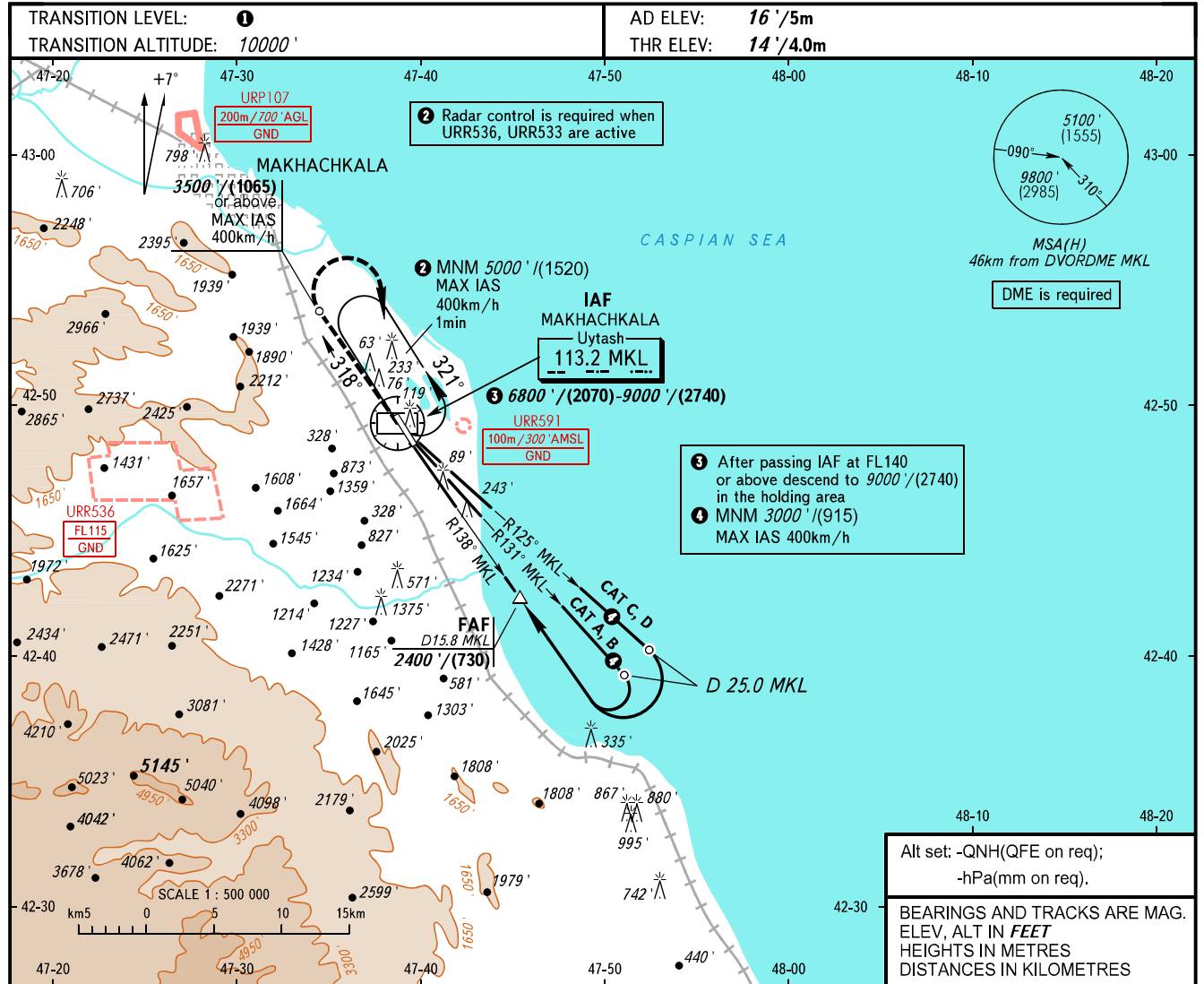


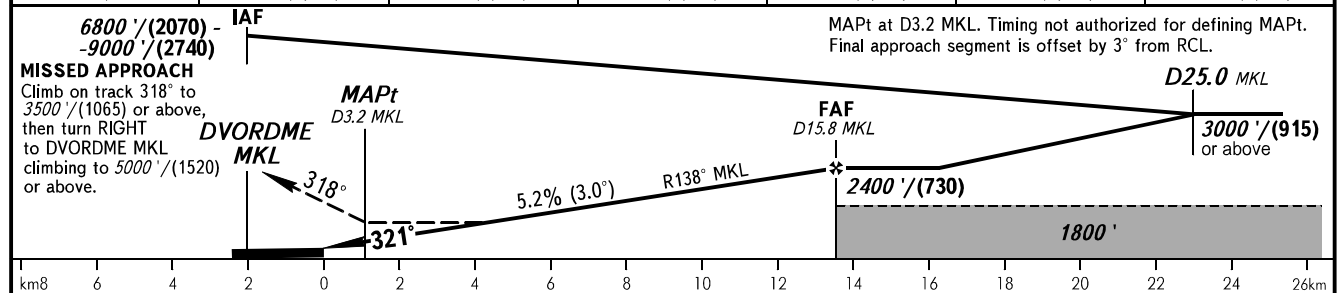
**INSTRUMENT
APPROACH
CHART - ICAO**

RADAR
START **121.300**
121.300

MAKHACHKALA, RUSSIA
UYTASH
DVOR RWY 32



DME MKL	4.0	6.0	8.0	10.0	12.0	14.0
ALTITUDE/HEIGHT	400'/(120)	744'/(225)	1087'/(330)	1432'/(435)	1776'/(540)	2120'/(645)



OCA(H)		A	B	C	D
Straight-in Approach	2.5%*	1100' (1090')	1100' (1090')	1100' (1090')	1100' (1090')
	3.5%*	740' (730')	740' (730')	740' (730')	740' (730')
Circling		1100' (1090')	1100' (1090')	1720' (1700')	1870' (1860')

* MNM climb gradient

1 TRANSITION LEVEL:
- FL110 when QNH is 1013 hPa (760mm mercury column) or above;
- FL120 when QNH is 977 hPa (733mm mercury column) or above, but less than 1013 hPa (760mm mercury column);
- FL130 when QNH is less than 977 hPa (733mm mercury column).

WARNING:
1. Visual manoeuvring west of the aerodrome is PROHIBITED.
2. Turn before passing MAPt is PROHIBITED.

GROUND SPEED	km/h	150	180	210	240	270	300	330	360	390	420	450
RATE OF DESCENT	m/s	2.2	2.6	3.0	3.5	3.9	4.3	4.8	5.2	5.6	6.1	6.5
	ft/min	427	512	597	682	768	853	938	1024	1109	1194	1280

CHANGE: New chart