

LAS VEGAS, NEVADA

HI-ILS or LOC Z RWY 21L

LOC I-DIQ 109.1	APCH CRS 209°	Rwy Idg 21L 10,051	21R 10,120
		TDZE 1865	1869
		Arprt Elev 1869	

- (USAF)

NELLIS AFB (KLSV)

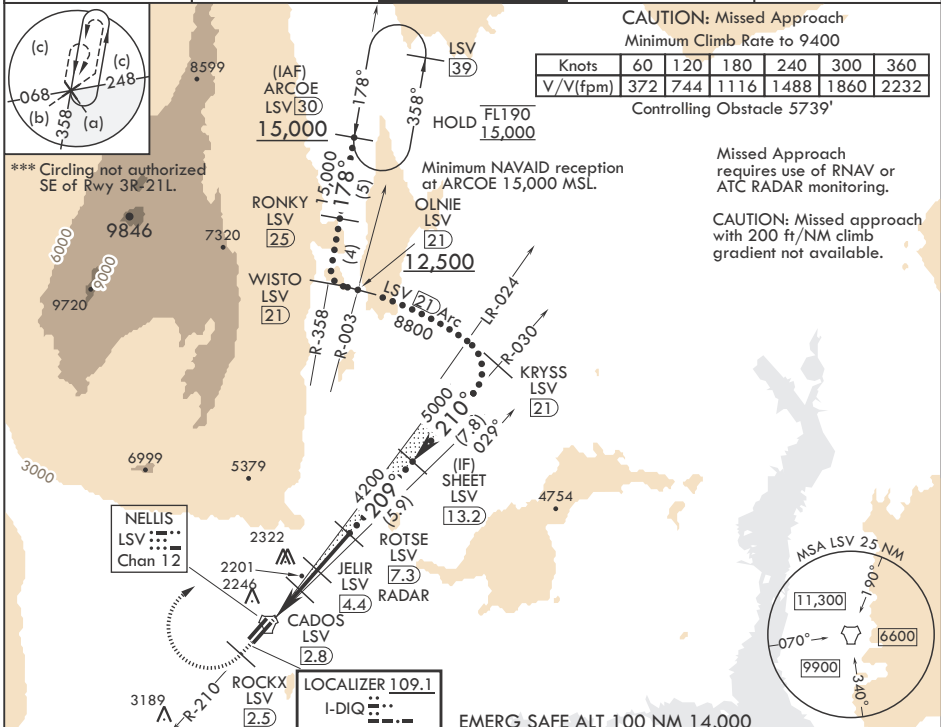
DME or RADAR required.

▼ * When ALS inop, increase RVR to 40, vis to 3/4 mile.
 ** When ALS inop, increase vis to 1 3/8 miles.



MISSED APPROACH: Climb to 15,000, intercept LSV TACAN R-210 to 2.5 DME (ROCKX), then climbing right turn heading 043° to intercept LSV R-358 to ARCOE and hold, climb in hold to 15,000. Missed approach not for civil use.

ATIS 270.1	APP CON 124.95 273.55	TOWER 132.55 327.0	GND CON 121.8 275.8	CLNC DEL 120.9 289.4
----------------------	---------------------------------	------------------------------	-------------------------------	--------------------------------



SW-4, 20 MAR 2025 to 17 APR 2025

SW-4, 20 MAR 2025 to 17 APR 2025

15,000 LSV R-210	ROCKX LSV 2.5	VGSI and ILS glidepath not coincident (VGSI Angle 3.00/TCH 54).	ROTSE 7.3 RADAR	SHEET 13.2 Intcp Lczr	ELEV 1869	TDZE 21L 1865 TDZE 21R 1869
TACAN			CADOS 2.8		JELIR 4.4	
SESDE 1.6			2760		3260	
0.4			2.2 NM		1.6 NM	
			2.9 NM		5000	
CATEGORY			C	D	E	
S-ILS 21L*			2065/24	200	(200-1/2)	
S-LOC 21L**			2360/50	495	(500-1)	
SIDESTEP 21R			2380-1 3/8	511	(600-1 1/4)	
CIRCLING***			2560-2 691 (700-2)	2840-3 971 (1000-3)	3140-3 1271 (1300-3)	
HIRL all Rwys			FAF to MAP 6.7 NM			
			Knots 120 140 160 180 200			
			Min:Sec 3:21 2:52 2:31 2:14 2:01			

LAS VEGAS, NEVADA

36°14'N - 115°02'W

NELLIS AFB (KLSV)

Amdt 10 10AUG23

HI-ILS or LOC Z RWY 21L

