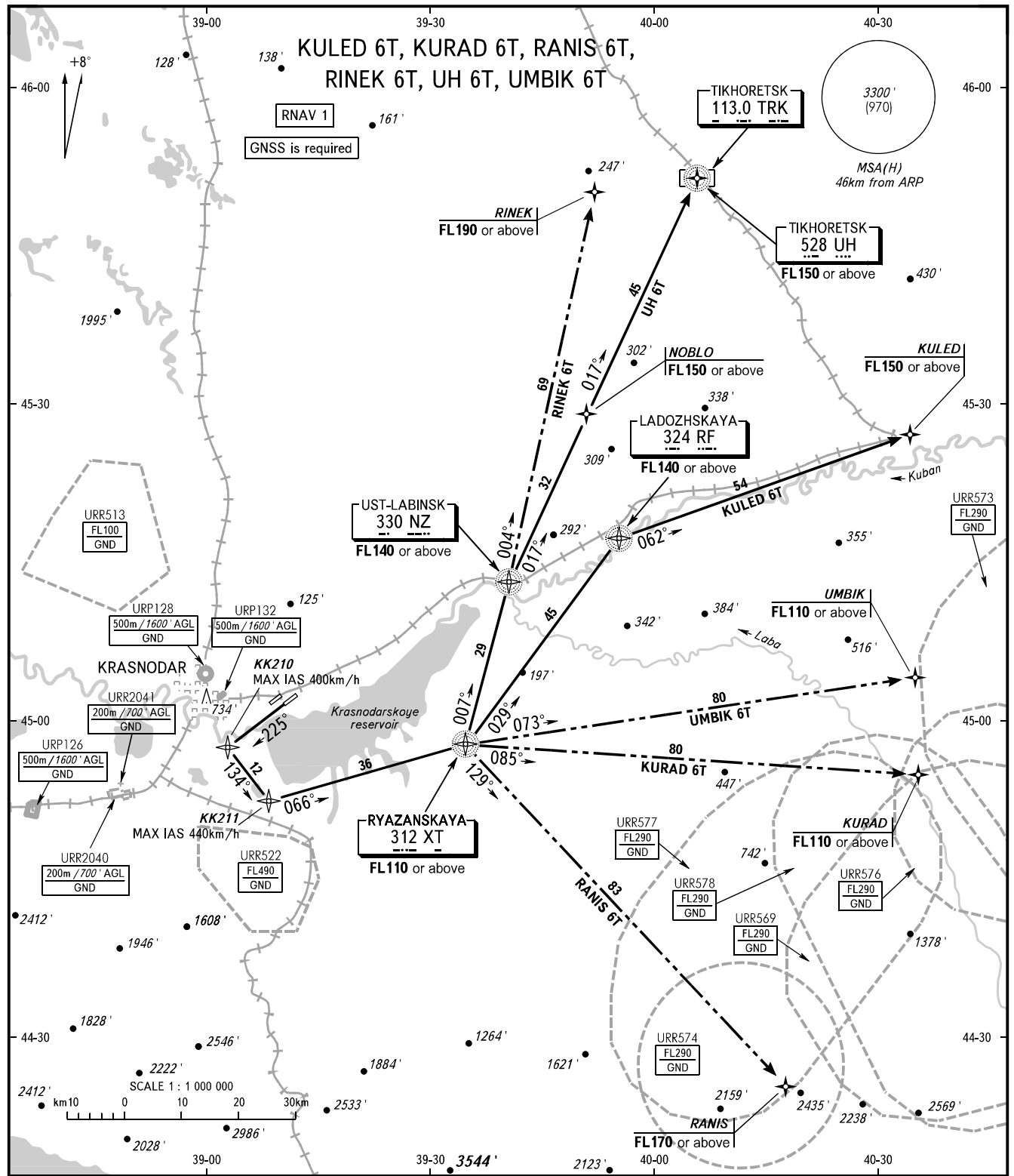


STANDARD DEPARTURE CHART
INSTRUMENT (SID) - ICAO

TRANSITION ALT: 4000'
TRANSITION HGT: (1185)

KRASNODAR, RUSSIA
PASHKOVSKIY
RNAV RWY 23L



TOWER	118.200
RADAR	121.300
APPROACH Sector WEST	127.700
Sector EAST	129.600
BEARINGS AND TRACKS ARE MAGNETIC ALTITUDES AND ELEVATIONS IN FEET HEIGHTS IN METRES DISTANCES IN KILOMETRES	Alt set: -QNH(QFE on req); -hPa(mm on req).

WARNING
The minimum climb gradient (required due to the airspace structure only) is 5.8% up to FL110 for all SID.

NOTE:

- When URR574, URR577 are active, SID RANIS 6T is not AVBL.
- When URR577, URR578, URR569, URR576 are active, SID KURAD 6T is not AVBL.
- When URR578 is active, SID UMBIK 6T is not AVBL.

CHANGE: NIL