

VORTAC TWF <b>113.1</b> Chan <b>78</b>	APP CRS <b>248°</b>	Rwy Idg TDZE Apt Elev	<b>8704</b> <b>4154</b> <b>4154</b>
--	------------------------	-----------------------------	---

# VOR RWY 26

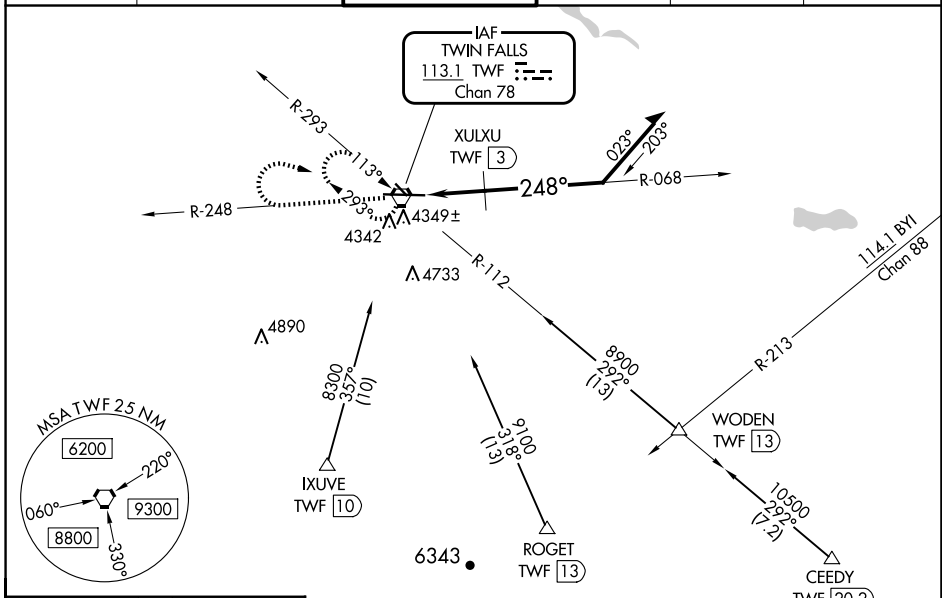
JOSLIN FLD/MAGIC VALLEY RGNL (TWF)

**⚠** Night landing: Rwy 30 NA. VDP NA with Jerome altimeter setting. When local altimeter setting not received, use Jerome altimeter setting and increase all MDA 60 feet; increase S-26 Cat A visibility ¼ mile, Cat C/D ½ mile, Circling Cat C ¼ mile, and XULXU FIX S-26 Cat C/D ½ mile. For inop MALSR, increase S-26 Cat C/D visibility to 2½ miles; when using Jerome altimeter setting increase XULXU FIX S-26 Cat C/D visibility to 1¾ mile.

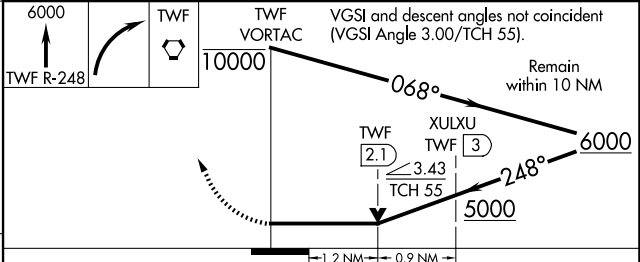
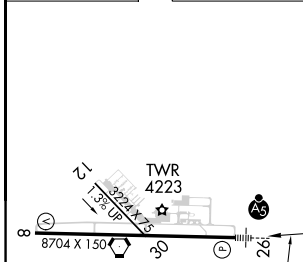


**MISSED APPROACH:** Climb to 6000 on TWF VORTAC R-248 then right turn direct TWF VORTAC and hold.

ASOS <b>135.025</b>	TWIN FALLS APP CON* <b>126.7 353.75</b>	TWIN FALLS TOWER* <b>118.2 (CTAF) 0 317.5</b>	GND CON <b>121.7</b>	CLNC DEL <b>123.65</b>	UNICOM <b>122.95</b>
------------------------	--	--	-------------------------	---------------------------	-------------------------



ELEV <b>4154</b>	TDZE <b>4154</b>
------------------	------------------



CATEGORY	A	B	C	D
S-26	5000-½ 846 (900-½)	5000-¾ 846 (900-¾)	5000-1⅞ 846 (900-1⅞)	846 (900-1⅞)
<b>C</b> CIRCLING	5000-1¼ 846 (900-1¼)	846 (900-1¼)	5100-2¾ 946 (1000-2¾)	5100-3 946 (1000-3)
<b>XULXU FIX MINIMUMS</b>				
S-26	4600-½ 446 (500-½)	446 (500-½)	4600-7/8 446 (500-7/8)	446 (500-7/8)
<b>C</b> CIRCLING	4700-1 546 (600-1)	4780-1 626 (700-1)	5100-2¾ 946 (1000-2¾)	5100-3 946 (1000-3)

REIL Rwy 8 **0**  
HIRL Rwy 8-26 **0**

NW-1, 20 MAR 2025 to 17 APR 2025

NW-1, 20 MAR 2025 to 17 APR 2025