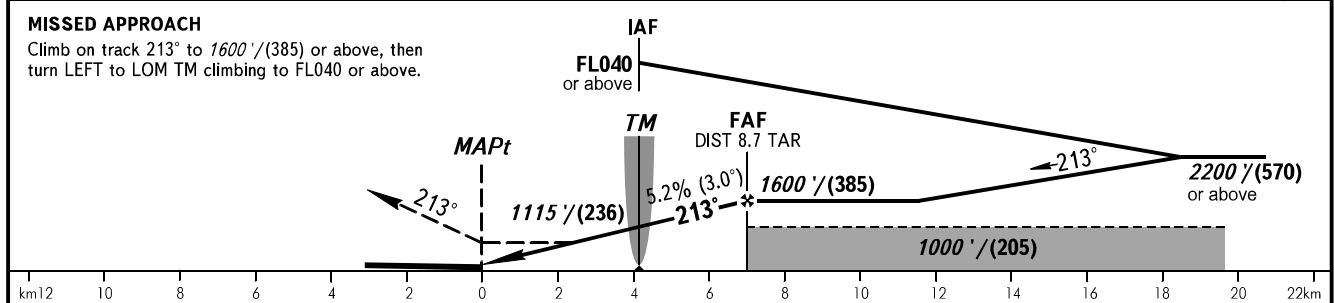
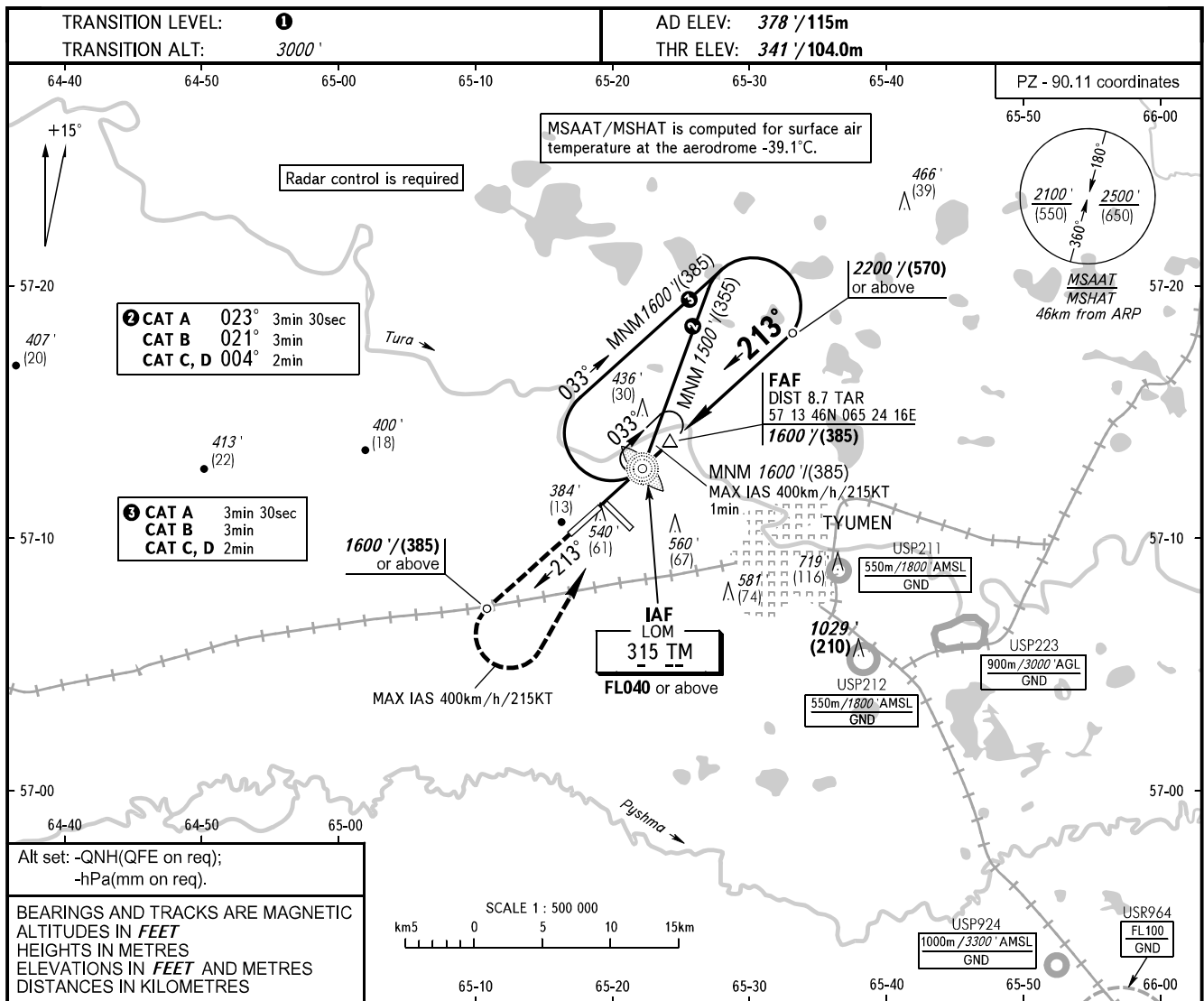


**INSTRUMENT  
APPROACH  
CHART - ICAO**

**TYUMEN, RUSSIA  
ROSHCHINO  
NDB RWY 21**

RADAR **126.100**  
START **118.200**



OCA(H)		A	B	C	D	<b>1</b> TRANSITION LEVEL: - FL040 when QNH is 1013 hPa (760mm mercury column) or above; - FL050 when QNH is 977 hPa (733mm mercury column) or above, but less than 1013 hPa (760mm mercury column); - FL060 when QNH is less than 977 hPa (733mm mercury column).  <b>WARNING:</b> 1. Turn before passing MAPt is PROHIBITED. 2. TAR distance is indicated from ARP.			
Straight-in	Approach	790' (450') (140)	790' (450') (140)	790' (450') (140)	790' (450') (140)				
	Circling	840' (460') (145)	870' (500') (155)	970' (600') (185)	1070' (690') (215)				
GROUND SPEED	km/h	150	180	210	240	270	300	330	360
	kt	81	97	113	130	146	162	178	194
FAF - MAPt 7031m	min:sec	2:48	2:20	2:00	1:45	1:33	1:24	1:16	1:10
RATE OF DESCENT	m/s	2.2	2.6	3.1	3.5	3.9	4.4	4.8	5.2
	ft/min	433	512	610	689	768	866	945	1024