

STANDARD DEPARTURE CHART-INSTRUMENT

RJBE / KOBE

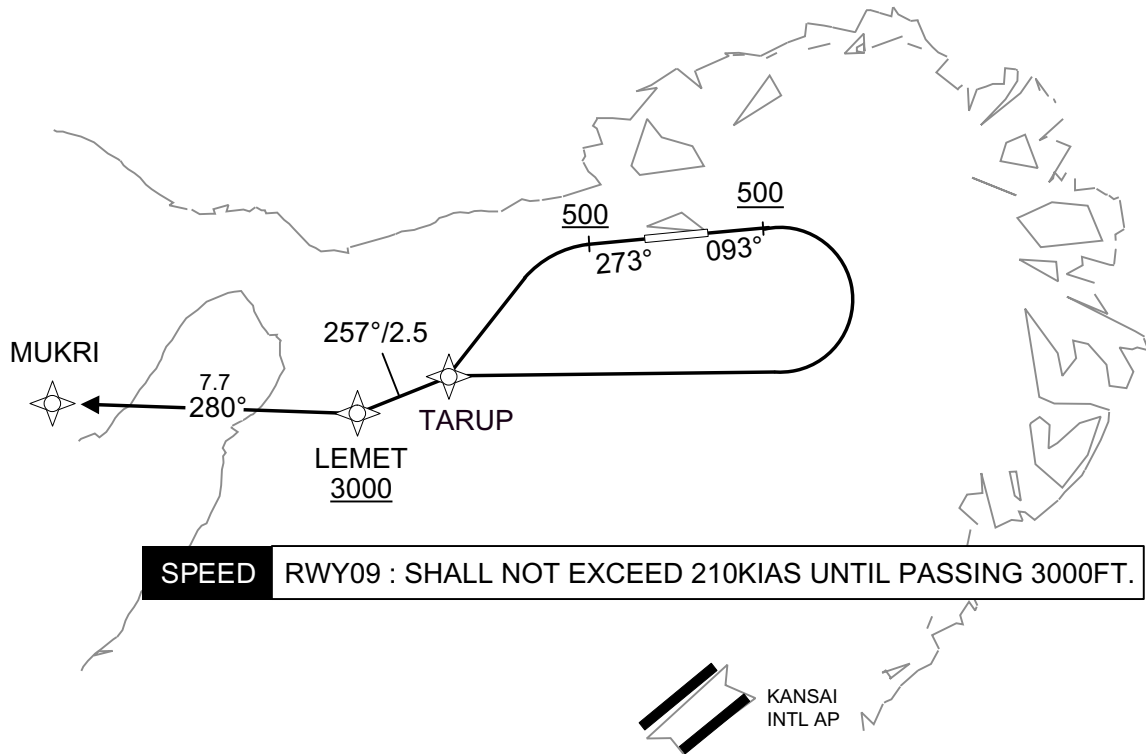
RNAV SID

MUKRI ONE DEPARTURE

RNP1

Note GNSS required.

VAR 8°W



RWY09 : Climb on HDG093° at or above 500FT, turn right direct to TARUP, to LEMET at or above 3000FT, to MUKRI.

RWY27 : Climb on HDG273° at or above 500FT, turn left direct to TARUP, to LEMET at or above 3000FT, to MUKRI.

Note RWY09 : 5.0% climb gradient required up to 500FT.  
RWY27 : 5.0% climb gradient required up to 500FT.

CHANGE : New PROC.

STANDARD DEPARTURE CHART-INSTRUMENT

RJBE / KOBE

RNAV SID

MUKRI ONE DEPARTURE

RWY09

Serial Number	Path Descriptor	Waypoint Identifier	Fly Over	Course °M(°T)	Magnetic Variation	Distance (NM)	Turn Direction	Altitude (FT)	Speed (KIAS)	Vertical Angle	Navigation Specification
001	VA	—	—	093 (084.6)	-8.2	—	—	+500	—	—	RNP1
002	DF	TARUP	—	—	-8.2	—	R	—	—	—	RNP1
003	TF	LEMET	—	257 (248.5)	-8.2	2.5	—	+3000	—	—	RNP1
004	TF	MUKRI	—	280 (272.0)	-8.2	7.7	—	—	—	—	RNP1

RWY27

Serial Number	Path Descriptor	Waypoint Identifier	Fly Over	Course °M(°T)	Magnetic Variation	Distance (NM)	Turn Direction	Altitude (FT)	Speed (KIAS)	Vertical Angle	Navigation Specification
001	VA	—	—	273 (264.6)	-8.2	—	—	+500	—	—	RNP1
002	DF	TARUP	—	—	-8.2	—	L	—	—	—	RNP1
003	TF	LEMET	—	257 (248.5)	-8.2	2.5	—	+3000	—	—	RNP1
004	TF	MUKRI	—	280 (272.0)	-8.2	7.7	—	—	—	—	RNP1

Waypoint Coordinates

Waypoint Identifier	Coordinates	Waypoint Identifier	Coordinates
TARUP	343423.6N / 1350626.5E	MUKRI	343345.5N / 1345419.2E
LEMET	343329.7N / 1350340.2E		

CHANGE : New PROC.