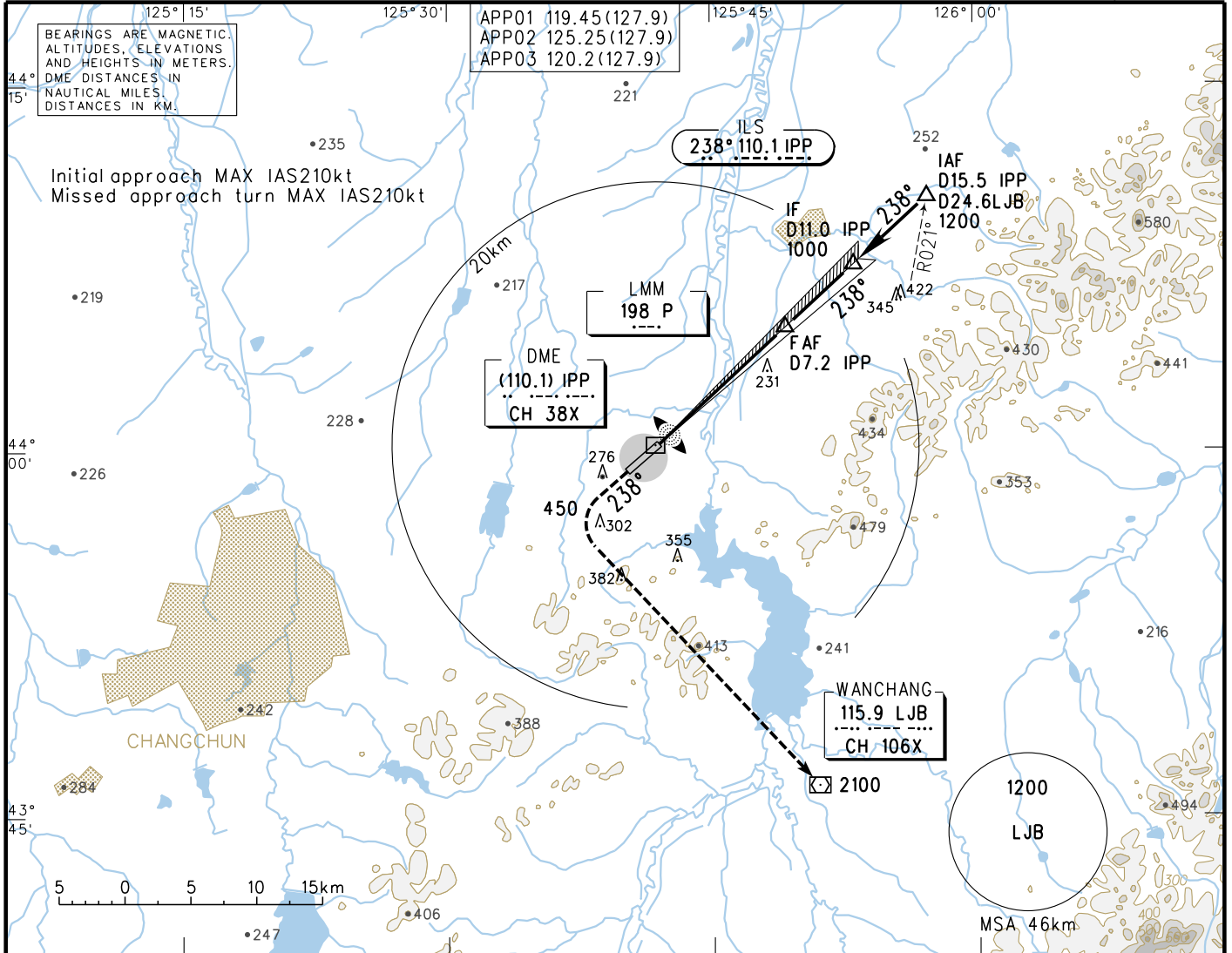


INSTRUMENT APPROACH CHART-ICAO

AERODROME ELEV 215.3 D-ATIS 126.25
 VAR9° W THR RWY24 ELEV 196.8 TWR 118.85(124.35)

ZYCC CHANGCHUN/Longjia

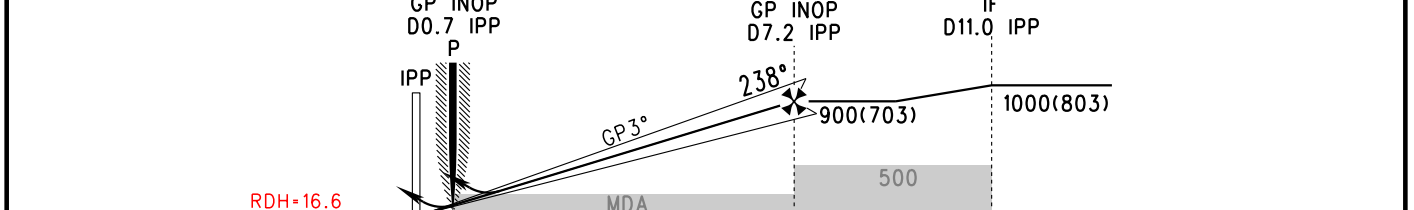
ILS/DME y RWY24



GP INOP	DME (IPP) (NM)	1	2	3	4	5	6	7
	ALT (m)			391	488	585	682	779

MISSED APPROACH
 Climb straight ahead to 450, turn LEFT to LJB at 2100, contact ATC.

TL 3600
 TA 3000
 3300(QNH ≥ 1031hPa)
 2700(QNH ≤ 979hPa)



					FAF - MAPt(GP INOP) 12.1km							
		A	B	C	D	GS in kt	80	100	120	140	160	180
ILS/DME	DA(H) RVR/VIS	257(60) 550/800	262(65) 550/800	267(70) 550/800	267(70) 550/800	80	150	185	220	260	295	335
		272(75) 550/800	277(80) 800/800	282(85) 800/800	282(85) 800/800	100	3:55	3:16	2:48	2:27	2:11	
GP INOP	MDA(H) RVR/VIS	320(124) 1500/1500				120	3:16	3:2	3:8	4:3	4:9	
CIRCLING	MDA(H) VIS	370(155) 2100	395(180) 2100	475(260) 3600	505(290) 4400	140	2:48	2:27	2:11			

Note: ● Missed approach climb gradient.
 Changes: RDH.