

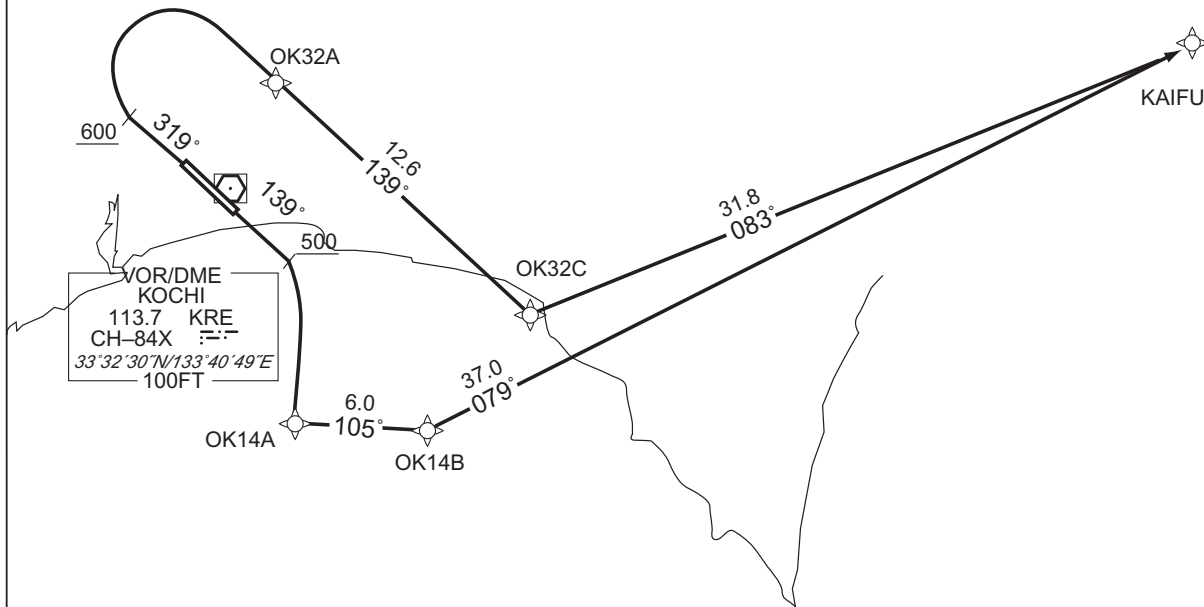
STANDARD DEPARTURE CHART -INSTRUMENT

RJOK / KOCHI

RNAV SID

KAIFU TWO DEPARTURE		RNAV 1
Note 1) DME/DME/IRU or GNSS required. ※The aircraft equipped with only DME/DME/IRU must be able to update its position without delay at the starting point of take-off roll. 2) RADAR service required.	Critical DME	RWY14 : KRE 3.0NM FM DER - 23NM to KAIFU SUC 3.0NM FM DER - 32NM to KAIFU RWY32 : KRE 9NM to OK32C - 28NM to KAIFU SUC 9NM to OK32C - 4NM to OK32C
	DME GAP	RWY14 : DER - 3.0NM FM DER RWY32 : DER - 9NM to OK32C
	Inappropriate Nav aids	See AD1.1.6.10.3. Inappropriate NAVAIDS for RNAV1

VAR 8° W



CHANGE : PROC renamed. VAR. PROC course. Note RWY14 added.

RWY14 : Climb on HDG139° at or above 500FT, turn right direct to OK14A, to OK14B, to KAIFU.

RWY32 : Climb on HDG319° at or above 600FT, turn right direct to OK32A, to OK32C, to KAIFU.

Note RWY14 : 5.0% climb gradient required up to 500FT.

OBST ALT 61FT located at 0.2NM 179° FM end of RWY14.

RWY32 : 6.0% climb gradient required up to 2300FT.

OBST ALT 1970FT located at 6.1NM 005° FM end of RWY32.

STANDARD DEPARTURE CHART -INSTRUMENT

RJOK / KOCHI

RNAV SID

KAIFU TWO DEPARTURE

RWY14

Serial Number	Path Descriptor	Waypoint Identifier	Fly Over	Course °M(°T)	Magnetic Variation	Distance (NM)	Turn Direction	Altitude (FT)	Speed (KIAS)	Vertical Angle	Navigation Specification
001	VA	—	—	139 (130.6)	-7.9	—	—	+500	—	—	RNAV1
002	DF	OK14A	—	—	-7.9	—	R	—	—	—	RNAV1
003	TF	OK14B	—	105 (097.5)	-7.9	6.0	—	—	—	—	RNAV1
004	TF	KAIFU	—	079 (070.7)	-7.9	37.0	—	—	—	—	RNAV1

RWY32

Serial Number	Path Descriptor	Waypoint Identifier	Fly Over	Course °M(°T)	Magnetic Variation	Distance (NM)	Turn Direction	Altitude (FT)	Speed (KIAS)	Vertical Angle	Navigation Specification
001	VA	—	—	319 (310.6)	-7.9	—	—	+600	—	—	RNAV1
002	DF	OK32A	—	—	-7.9	—	R	—	—	—	RNAV1
003	TF	OK32C	—	139 (130.7)	-7.9	12.6	—	—	—	—	RNAV1
004	TF	KAIFU	—	083 (075.0)	-7.9	31.8	—	—	—	—	RNAV1

Waypoint Coordinates

Waypoint Identifier	Coordinates	Waypoint Identifier	Coordinates
OK14A	332450.3N / 1334334.2E	KAIFU	333610.0N / 1343231.2E
OK14B	332402.9N / 1335040.3E		
OK32A	333615.7N / 1334417.5E		
OK32C	332804.1N / 1335542.6E		

CHANGE : PROC renamed. PROC course. VAR added. Navigation Specification. Waypoint Coordinates added.