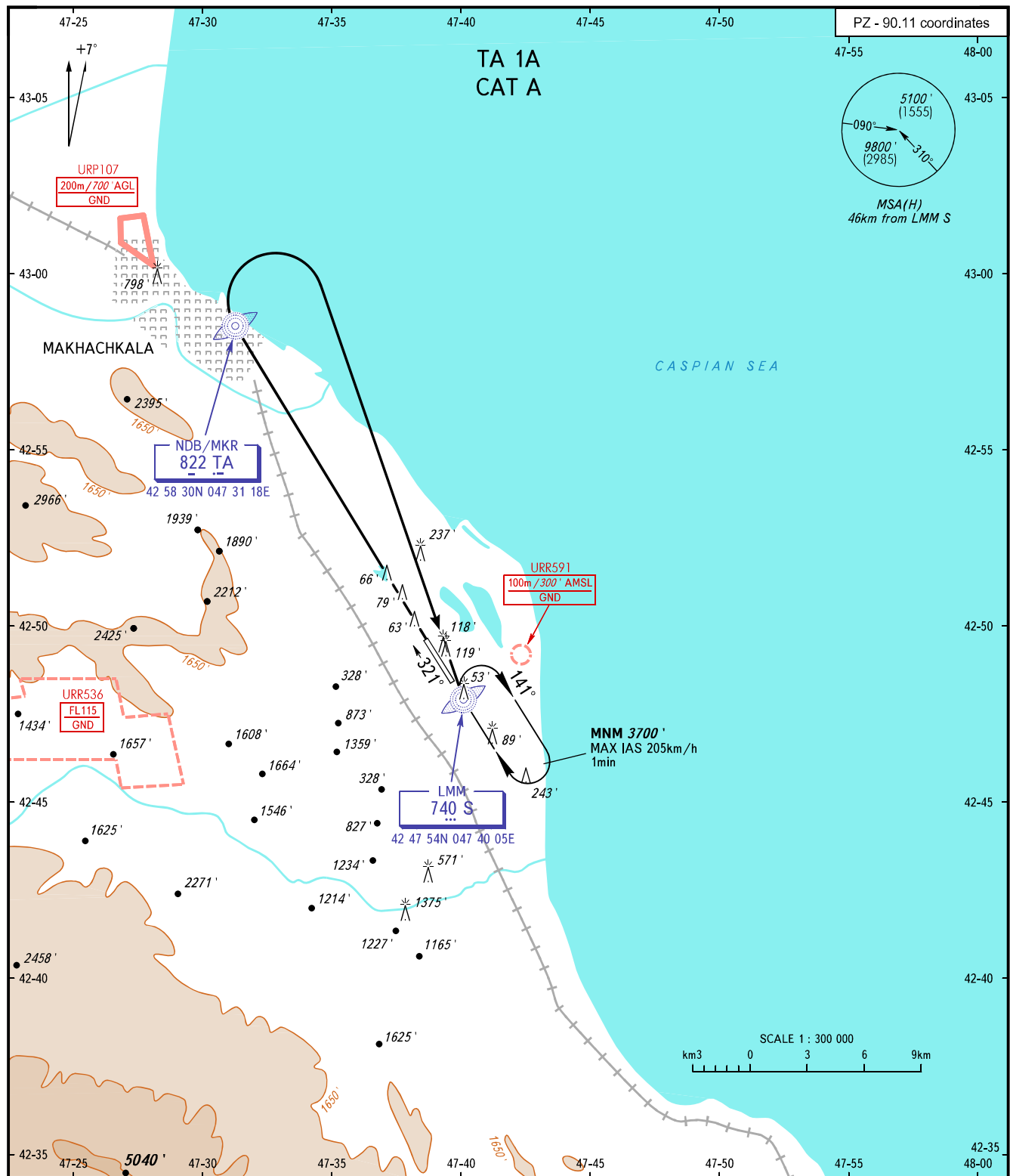


STANDARD DEPARTURE CHART  
INSTRUMENT (SID) - ICAO

TRANSITION  
ALTITUDE : 10000'

MAKHACHKALA, RUSSIA  
UYTASH  
RWY 32



START	121.300	<b>WARNING</b> Radar control is required when URR536 is active. The minimum climb gradient (required due to obstacles) is 4.3% up to 3000'.
RADAR	121.300	
APPROACH	119.700	

BEARINGS AND TRACKS ARE MAGNETIC  
ALTITUDES AND ELEVATIONS IN FEET  
HEIGHTS IN METRES  
DISTANCES IN KILOMETRES

Alt set: -QNH(QFE on req);  
-hPa(mm on req).

CHANGE: NDB/MKR