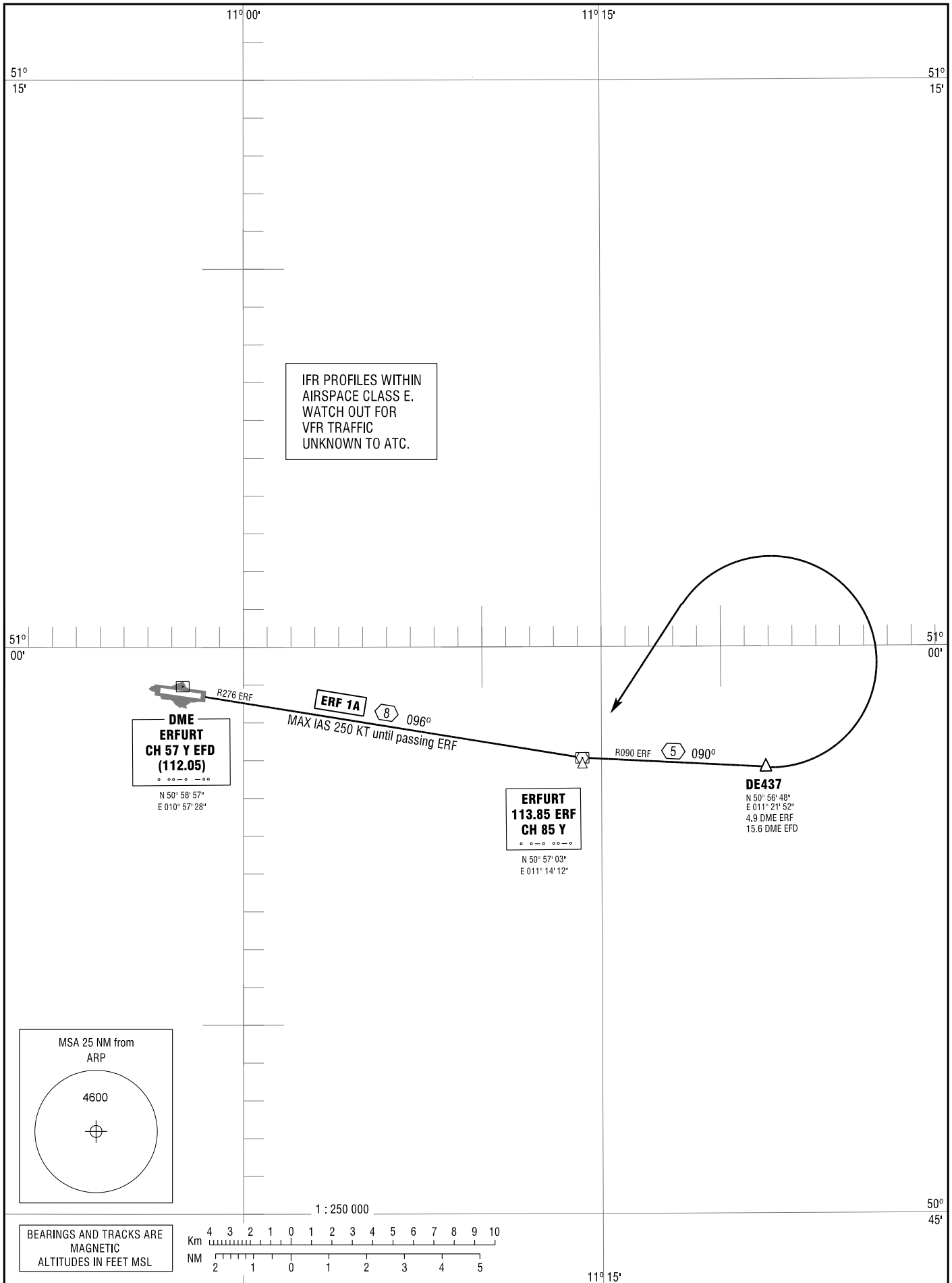


STANDARD DEPARTURE
CHART - INSTRUMENT
(SID)

TRANSITION
ALTITUDE 5000
VAR 3° E

ERFURT ATIS	133.455	ERFURT APRON	121.905
ERFURT GROUND	121.755	MUENCHEN RADAR	126.175
ERFURT TOWER	121.155		

ERFURT-WEIMAR
RWY 09
ERF 1A



IFR PROFILES WITHIN
AIRSPACE CLASS E.
WATCH OUT FOR
VFR TRAFFIC
UNKNOWN TO ATC.

**DME
ERFURT
CH 57 Y EFD
(112.05)**

N 50° 58' 57"
E 010° 57' 28"

ERF 1A

8 096°

MAX IAS 250 KT until passing ERF

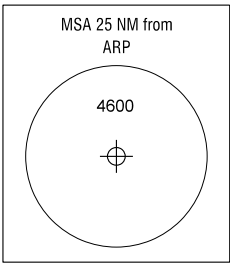
**ERFURT
113.85 ERF
CH 85 Y**

N 50° 57' 03"
E 011° 14' 12"

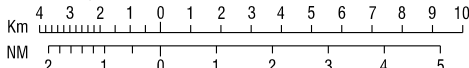
5 090°

DE437

N 50° 58' 48"
E 011° 21' 52"
4.9 DME ERF
15.6 DME EFD



BEARINGS AND TRACKS ARE
MAGNETIC
ALTITUDES IN FEET MSL



Correction: NDB ERT withdrawn.