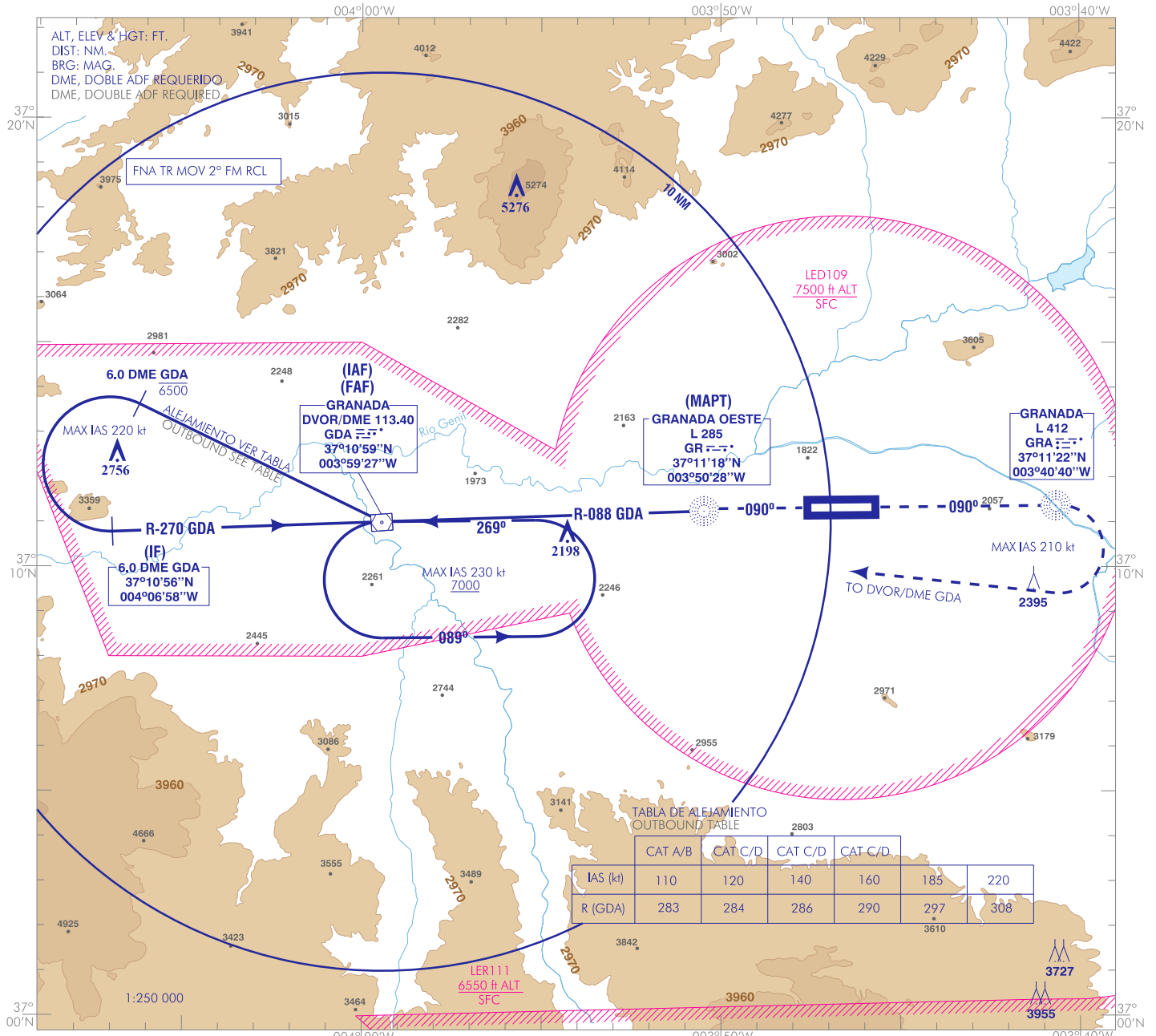


CARTA DE APROXIMACIÓN
POR INSTRUMENTOS-OACI

ELEV AD
1860
VAR 0° (2020)

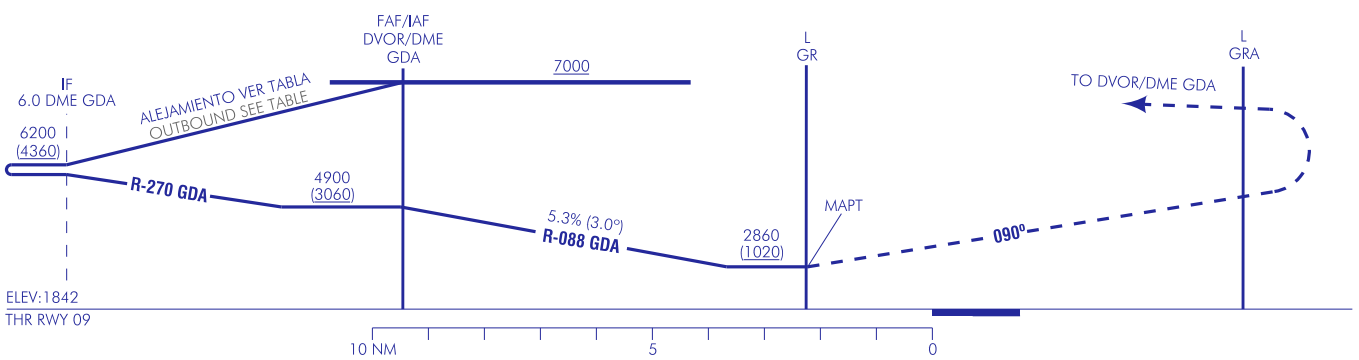
APP 118.855 C
TWR 118.855 C
GMC 121.930 C
ATIS 120.630 C

GRANADA/Federico García Lorca
Granada - Jaén
VOR
RWY 09



| | CAT A/B | CAT C/D | CAT C/D | CAT C/D | CAT C/D | CAT C/D |
|----------|---------|---------|---------|---------|---------|---------|
| IAS (kt) | 110 | 120 | 140 | 160 | 185 | 220 |
| R (GDA) | 283 | 284 | 286 | 290 | 297 | 308 |

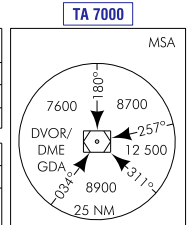
FRUSTRADA: SUBIR EN RUMBO 090° DIRECTO A L GRA, VIRAR A LA DERECHA (IAS MAX EN VIRAJE 210 kt) DIRECTO AL DVOR/DME GDA SUBIENDO A 7000 PARA INTEGRARSE A LA ESPERA.
MISSED APCH: CLIMB ON HEADING 090° DIRECT TO L GRA, TURN RIGHT (TURNING MAX IAS 210 kt) DIRECT TO DVOR/DME GDA CLIMBING TO 7000 TO JOIN THE HOLDING.



| HGT REF ELEV THR RWY 09 | OCA/H | A | B | C | D |
|--|-------------|-------------|-------------|---|---|
| STA | 2.5% | 2860 (1020) | | | |
| | | | | | |
| En circuito (H) sobre Circling (H) over 1860 | 2860 (1000) | 3020 (1160) | 4110 (2250) | | |

| GS | kt | 80 | 100 | 120 | 140 | 160 | 180 |
|------------|--------|--|-----|-----|-----|-----|-----|
| FAF-THR: | min:s | | | | | | |
| FAF-MAPT: | min:s | NO AUTORIZADO EL CRONOMETRAJE // TIMING NOT AUTHORIZED | | | | | |
| ROD: 5.3 % | ft/min | 431 | 539 | 646 | 754 | 862 | 970 |

| ALT/HGT DME (GDA) FNA | | | | | | | | | | | | |
|-----------------------|---|---|---|---|---|---|-------------|-------------|-------------|-------------|-------------|-------------|
| 6 | 5 | 4 | 3 | 2 | 1 | 0 | 1 | 2 | 3 | 4 | 5 | 6 |
| | | | | | | | 4630 (2790) | 4310 (2470) | 3990 (2140) | 3660 (1820) | 3340 (1500) | 3020 (1170) |



CAMBIOS: ELIMINACIÓN NOTA. CHANGES: REMOVE NOTE.

GRANADA/Federico García Lorca Granada-Jaén AD

REQUISITOS DE LA BASE DE DATOS AERONÁUTICA
 AERONAUTICAL DATABASE REQUIREMENTS

PROCEDIMIENTOS DE APROXIMACIÓN POR INSTRUMENTOS // INSTRUMENT APPROACH PROCEDURES

VOR RWY 09

| PUNTO POINT | LAT | LONG | AZIMUT VERDADERO TRUE BEARING | DISTANCIA DME DME DISTANCE (NM) |
|--|-----------|------------|----------------------------------|---------------------------------------|
| DVOR/DME GDA (IAF/FAF) | 371059.4N | 0035927.3W | - | - |
| IF | 371056.2N | 0040658.3W | 269.52° (GDA) | 6.00 DME GDA |
| L GR (MAPT) | 371117.7N | 0035027.6W | - | - |
| Aproximación final de no precisión - Pendiente (Ángulo de descenso) // Non-precision final approach - Slope (Descent angle) | | | | 5.32% (3.04°) |