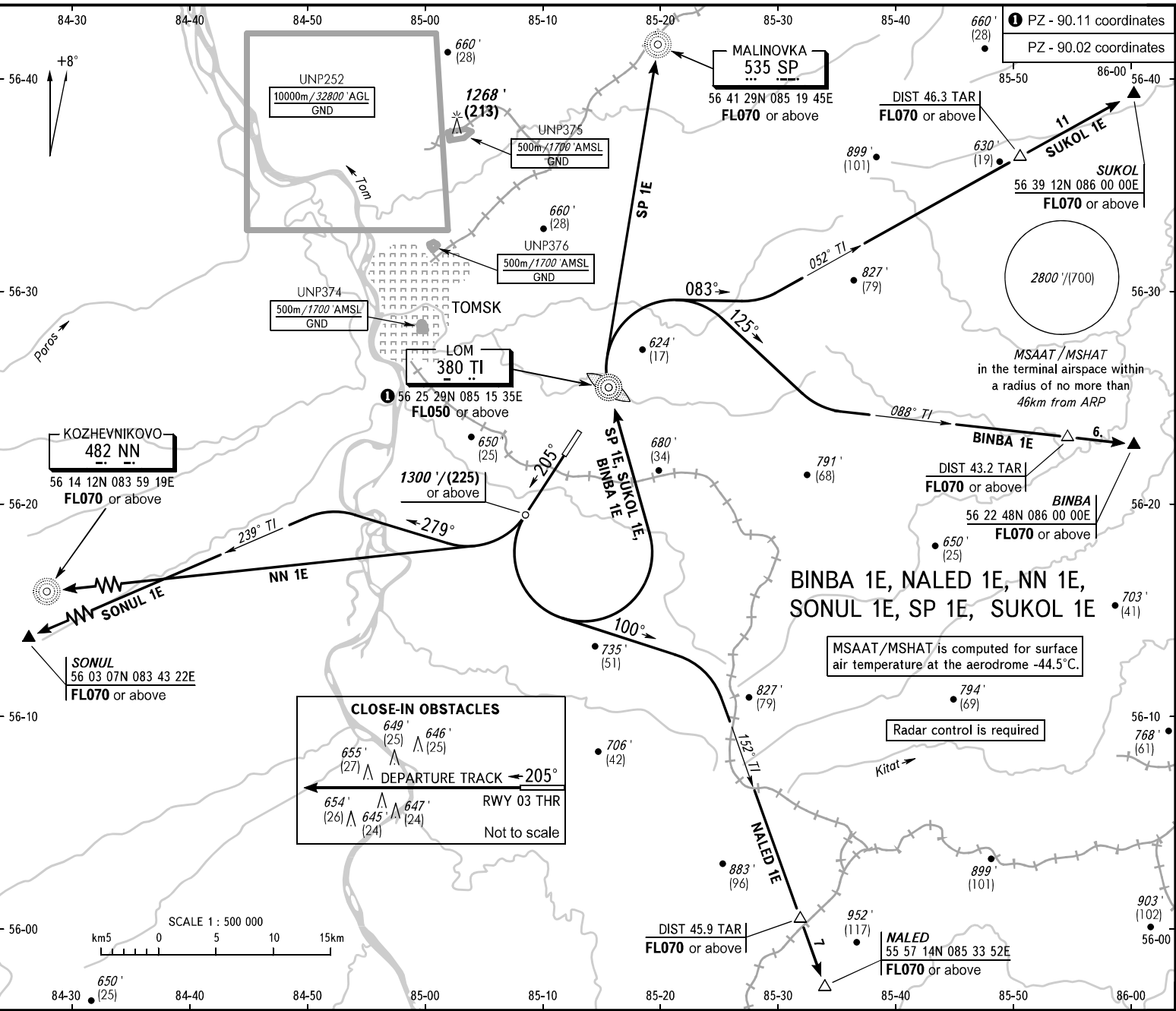


STANDARD DEPARTURE CHART
INSTRUMENT (SID) - ICAO

TRANSITION ALI: 4000'
TRANSITION HGT: (1000)

TOMSK, RUSSIA
BOGASHEVO
RWY 21



TOWER 127.300

WARNING:
 1. MINIMUM CLIMB GRADIENT (due to airspace structure):
NALED 1E 3.5% up to FL070.
 2. Turn before passing DER is PROHIBITED.

BEARINGS AND TRACKS ARE MAGNETIC
 ALTITUDES IN FEET
 HEIGHTS IN METRES
 ELEVATIONS IN FEET AND METRES
 DISTANCES IN KILOMETRES

Alt set: -QNH(QFE on red);
 -hPa(mm on red).

CHANGE: New chart