


LOC I-AGC <b>109.1</b>	APP CRS <b>281°</b>	Rwy ldg TDZE Apt Elev	<b>6501</b> <b>1251</b> <b>1252</b>
---------------------------	------------------------	-----------------------------	---

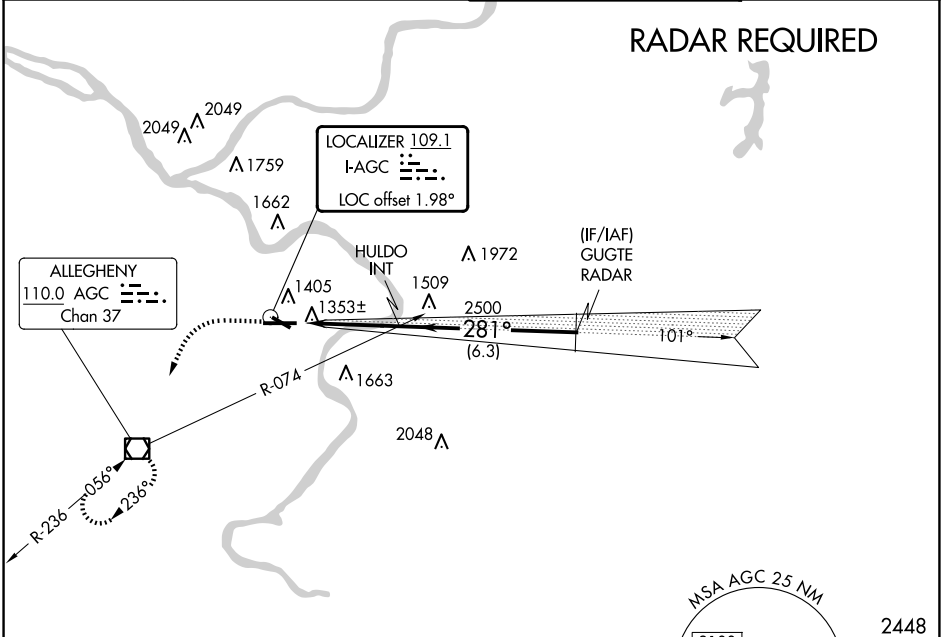
# ILS or LOC RWY 28

ALLEGHENY COUNTY (AGC)

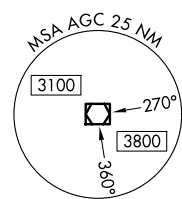
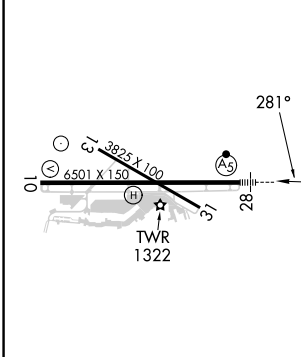
**⚠** For inoperative MALSR, increase S-LOC Cats C and D visibility to RVR 6000. Circling Rwy 13 NA at night.

**MALSR**  
 MISSED APPROACH: Climb to 2000 then climbing left turn to 3000 direct AGC VOR/DME and hold, continue climb-in-hold to 3000.

ATIS <b>120.55</b>	PITTSBURGH APP CON <b>119.35 285.575</b>	ALLEGHENY TOWER <b>121.1 239.0</b>	GND CON <b>121.7</b>
-----------------------	---	---------------------------------------	-------------------------



ELEV 1252	TDZE 1251
-----------	-----------



REIL Rwy 10, 13, and 31 HIRL Rwy 10-28 and 13-31	GUGTE RADAR			
FAF to MAP 3.8 NM	HULDO INT 2500			
Knots 60 90 120 150 180	281° 3000			
Min:Sec 3:48 2:32 1:54 1:31 1:16	2500			
<input checked="" type="checkbox"/> CIRCLING	1720-1	468 (500-1)	728 (800-2)	728 (800-2½)
	3.8 NM		6.3 NM	
	GS 3.00° TCH 51			
	CATEGORY	A	B	C
	S-ILS 28	1501/24 250 (300-½)		
	S-LOC 28	1660/24	409 (500-½)	1660/40 409 (500-¾)

NE-4, 20 MAR 2025 to 17 APR 2025

NE-4, 20 MAR 2025 to 17 APR 2025