

INSTRUMENT APPROACH  
CHART-ICAO

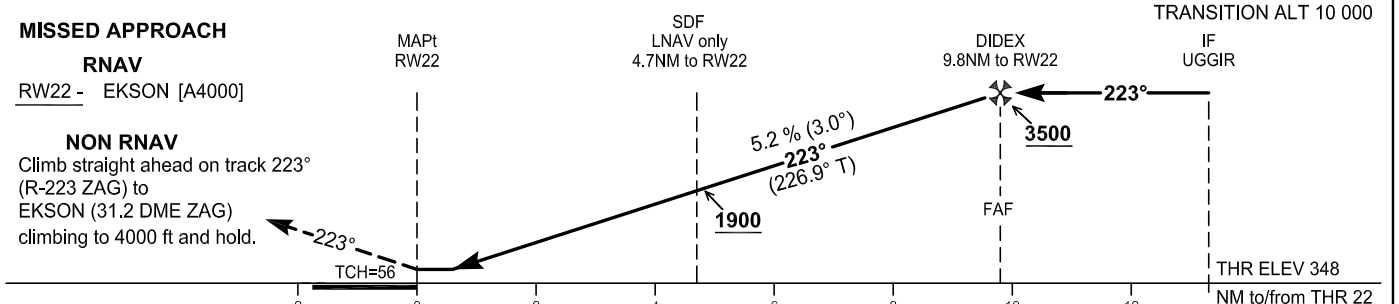
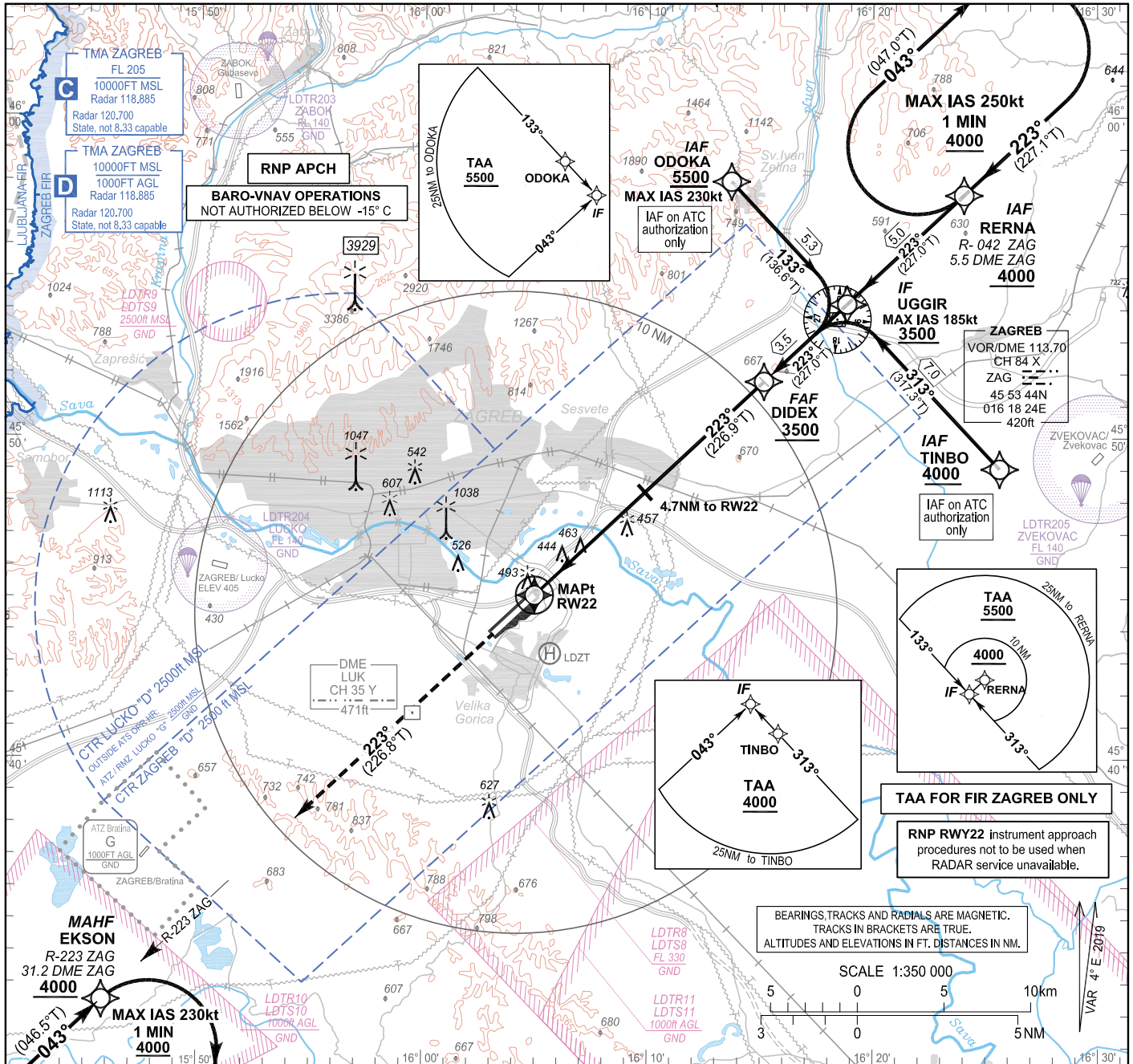
**AD ELEV 353**  
**HEIGHTS RELATED**  
**TO THR 22 ELEV 348**

SBAS  
CH: 90041  
E22A

ZAGREB ATIS 124.575  
ZAGREB RADAR 118.885  
ZAGREB RADAR 120.700 State, not 8.33 capable  
ZAGREB TOWER 118.300

**ZAGREB / Franjo Tuđman (LDZA)**

RNP RWY 22



OCA(H)		A	B	C	D	DIST THR / RW22	NM	9	8	7	6	5	4	3	2	1	
Straight-in approach	RNAV	740 (392)				Altitude	ft	3270	2950	2630	2310	1990	1680	1360	1040	720	
	LPV	630 (282)	640 (292)	650 (302)	660 (312)	Timing not authorized for defining the MAPt											
	LPV	630 (282)	640 (292)	650 (302)	660 (312)	GS	kt	80	100	120	140	160	180				
CIRCLING		860 (507)	890 (537)	990 (637)	1090 (737)	DIDEX -RW22 (9.8NM)	min:sec	7:21	5:53	4:54	4:12	3:41	3:16				
						Rate of descent (5.2%)	ft/min	425	531	637	743	849	955				

Note: Circling for ACFT CAT B, C and D NW of aerodrome not allowed

CHANGE: TMA classification vertical limits; Parachuting zones; Editorial.

## Coding elements for FAS Data Block

## Input data

Operation Type	0
SBAS Provider	1 (EGNOS)
Airport Identifier	LDZA
Runway	22
Runway Letter	0 (None)
Approach Performance Designator	0
Route Indicator	
Reference Path Data Selector	0
Reference Path Identifier	E22A
LTP/FTP Latitude	454506.8620N
LTP/FTP Longitude	0160456.7540E
LTP/FTP Ellipsoidal Height (metres)	151.3
FPAP Latitude	454353.6385N
Delta FPAP Latitude (seconds)	-73.2235
FPAP Longitude	0160305.4000E
Delta FPAP Longitude (seconds)	-111.3540
Threshold Crossing Height	56.0
TCH Units Selector	0 (feet)
Glidepath Angle (degrees)	3.00
Course Width (metres)	105.00
Length Offset (metres)	48
HAL (metres)	40.0
VAL (metres)	50.0

## Output data

Data Block	10 01 1A 04 0C 16 00 00 01 32 32 05 5C 74 A2 13 64 DE E6 06 E9 19 F1 C3 FD 0C 9A FC 30 02 2C 01 64 06 C8 FA 5C 95 B3 2D
Calculated CRC Value	5C95B32D

## Required Additional Data

ICAO Code	LD
LTP/FTP Orthometric Height (metres)	106.2

**LDZA RNP RWY22**

Proposed tabular description for navigation database coding - APPROACH TRANSITION

Serial Number	Fix	Path descriptor	Waypoint name	Flyover	Course	Magnetic Variation	Distance (NM)	Turn direction	Altitude (ft)	Speed (kt)	VPA/TCH (°/ft)	Remarks	NAV SPEC
					°M (°T)								
010	IAF	IF	ODOKA	-	-	4°E	-	-	+5500	-230	-	IAF on ATC authorization only	RNP APCH
020	IF	TF	UGGIR	-	133° (136.6°T)	4°E	5.3	-	+3500	-185	-	-	RNP APCH
010	IAF	IF	RERNA	-	-	4°E	-	-	+4000	-	-	-	RNP APCH
020	IF	TF	UGGIR	-	223° (227.0°T)	4°E	5.0	-	+3500	-185	-	-	RNP APCH
010	IAF	IF	TINBO	-	-	4°E	-	-	+4000	-	-	IAF on ATC authorization only	RNP APCH
020	IF	TF	UGGIR	-	313° (317.3°T)	4°E	5.0	-	+3500	-185	-	-	RNP APCH

Proposed tabular description for navigation database coding - FINAL TRANSITION

Serial Number	Fix	Path descriptor	Waypoint name	Flyover	Course	Magnetic Variation	Distance (NM)	Turn direction	Altitude (ft)	Speed (kt)	VPA/TCH (°/ft)	Remarks	NAV SPEC
					°M (°T)								
010	IF	IF	UGGIR	-	-	4°E	-	-	+3500	-185	-	-	RNP APCH
020	FAF	TF	DIDEX	-	223° (227.0°T)	4°E	3.5	-	+3500	-	-	-	RNP APCH
030	MAPt	TF	RW22	Y	223° (226.9°T)	4°E	9.8	-	-	-	3.0 / 56.0	-	RNP APCH
040	MAHF	TF	EKSON	-	223° (226.8°T)	4°E	18.5	-	4000	-	-	-	RNP APCH
050	MAHF	HM	EKSON	-	043° (046.5°T)	4°E	1 MIN	R	4000	-230	-	Holding above 4000R on ATC clearance only	RNAV 1

**RNAV HOLDING tabular description**

Waypoint name	Path Terminator	Inbound course °M (°T)	Leg time/distance NM	Turn direction	Minimum altitude FT	Maximum altitude FT	Speed limit MAX IAS (kt)	Magnetic variation	Remarks	NAV SPEC
EKSON	HM	043° (046.5°T)	1MIN / -	R	4000	-	230	4°E	-	RNAV 1
RERNA		223° (227.1°T)	1MIN / -	R	4000	-	250	4°E	-	

**Waypoint coordinates**

Waypoint name	WGS-84 Latitude	WGS-84 Longitude
ODOKA	455801.1N	0161340.1E
RERNA	455735.6N	0162402.7E
TINBO	454903.8N	0162538.1E
UGGIR	455412.2N	0161850.0E
DIDEX	455147.3N	0161508.0E
RW22	454506.86N	0160456.75E
EKSON	453227.7N	0154548.4E

CHANGE: TMA classification vertical limits; Parachuting zones; Editorial.

OVA STRANICA JE NAMJERNO OSTAVLJENA PRAZNA  
THIS PAGE INTENTIONALLY LEFT BLANK