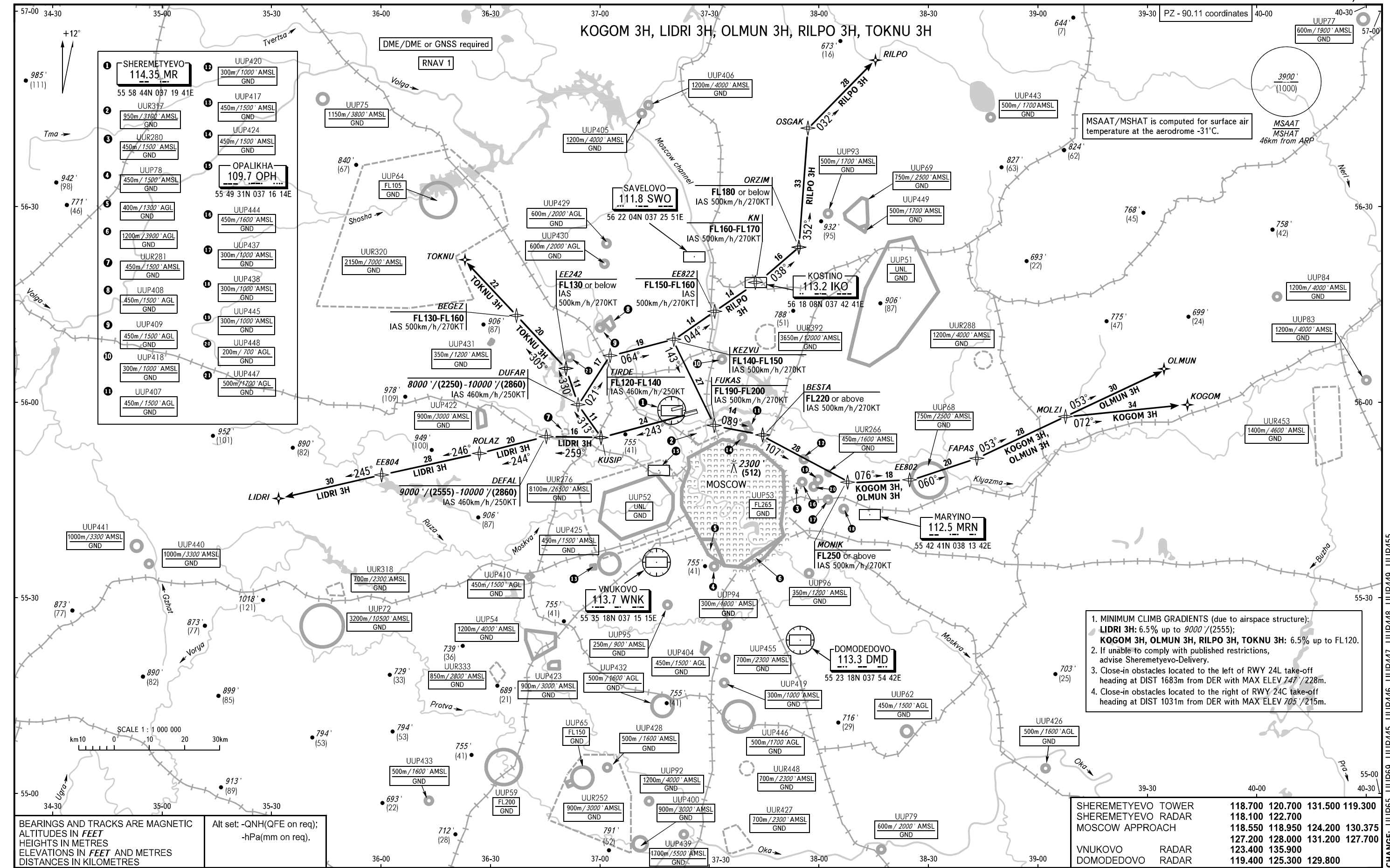


STANDARD DEPARTURE CHART
INSTRUMENT (SID) - ICAO

TRANSITION ALT: **10000'**
TRANSITION HGT: **(2860)**

MOSCOW, RUSSIA
SHEREMETYEVO
RNAV RWY 24C, 24L



1. MINIMUM CLIMB GRADIENTS (due to airspace structure):
 LIDRI 3H: 6.5% up to 9000'/(2555);
 KOGOM 3H, OLMUN 3H, RILPO 3H, TOKNU 3H: 6.5% up to FL120.
2. If unable to comply with published restrictions, advise Sheremetyevo-Delivery.
3. Close-in obstacles located to the left of RWY 24L take-off heading at DIST 1683m from DER with MAX ELEV 747' / 228m.
4. Close-in obstacles located to the right of RWY 24C take-off heading at DIST 1031m from DER with MAX ELEV 705' / 215m.

SHEREMETYEVO TOWER	118.700	120.700	131.500	119.300
SHEREMETYEVO RADAR	118.100	122.700		
MOSCOW APPROACH	118.550	118.950	124.200	130.375
VNUKOVO RADAR	127.200	128.000	131.200	127.700
DOMODEDOVO RADAR	123.400	135.900		
	119.400	125.300	129.800	

CHANGE: UUP65, UUP69, UUP445, UUP446, UUP447, UUP448, UUP449, UUP455