

EL CENTRO, CALIFORNIA

RNAV (GPS) RWY 8

WAAS CH 89932 W08A	APCH CRS 079°	Rwy ldg TDZE Arprt Elev	9503 -46 -42
---------------------------------	-------------------------	-------------------------------	---

- (USN)

EL CENTRO NAF (VRACIU FLD) (KNJK)

RNP APCH

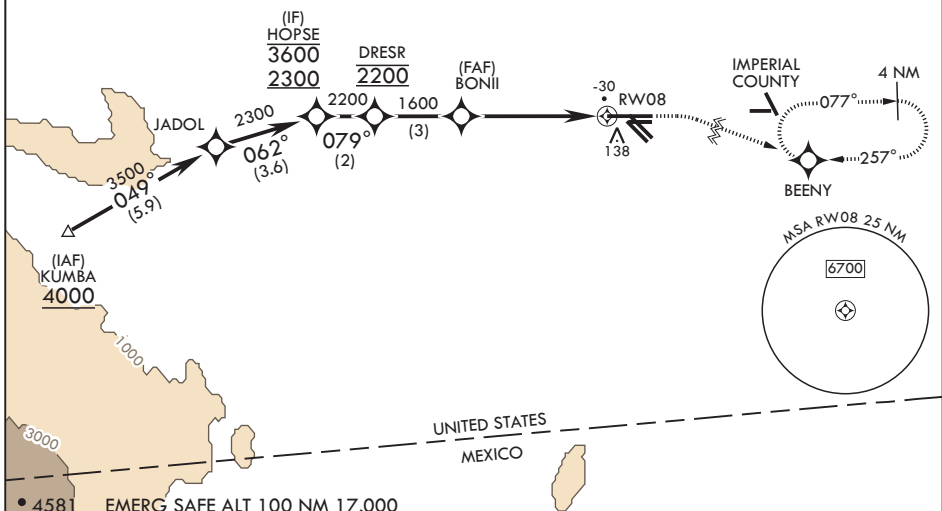
▼ Circling visibility reduction by helicopters NA.
When tower closed, increase visibility to 1 mile.

MISSED APPROACH: Climb to 800, then climbing right turn to 2400 direct BEENY and hold.

ATIS* 269.275	APP CON/DEP CON 128.55 292.2	TOWER* 119.1 360.2	GND CON 121.9 254.35	CLNC DEL 340.2
-------------------------	--	------------------------------	--------------------------------	--------------------------

Circling to Rwy 30 NA at night.

For uncompensated Baro-VNAV systems, LNAV/VNAV NA below -14°C (7°F) or above 54°C (129°F).



SW-3, 20 MAR 2025 to 17 APR 2025

SW-3, 20 MAR 2025 to 17 APR 2025

• 4581 EMERG SAFE ALT 100 NM 17,000

HOPSE 3600 2300	800	2400	BEENY	ELEV -42	TDZE -46
079°	crs 079°				
DRESR 2200					
BONII					
RWY 08					
GP 3.00° TCH 50					
CATEGORY	A	B	C	D	
LPV DA	204-¾	250	(300-¾)		
LNAV/VNAV DA	204-¾ 250 (300-¾)	235-⅞ 281 (300-⅞)	249-⅞ 295 (300-⅞)	268-⅞ 314 (400-⅞)	
LNAV MDA	460-1	506 (600-1)	460-1½	506 (600-1½)	
C CIRCLING	480-1	522 (600-1)	480-1½ 522 (600-1½)	520-2 562 (600-2)	

HIRL Rwy 8-26, 12-30

Detailed diagram of the RWY 08 approach. It shows the final approach path from the enroute profile, a 5 NM segment, and the missed approach procedure. The missed approach starts at 800 MSL, climbs to 2400 MSL, and then turns right to 077° heading. A 4 NM radius circle is shown around BEENY. The tower location is marked with a TWR symbol and a 138 MSL elevation. A 25 NM MSA circle is also shown around BEENY with a 6700 MSL ceiling. The diagram also shows the runway layout and the 079° heading.

EL CENTRO, CALIFORNIA

32°50'N - 115°40'W

EL CENTRO NAF (VRACIU FLD) (KNJK)

Orig 13JUL23

RNAV (GPS) RWY 8