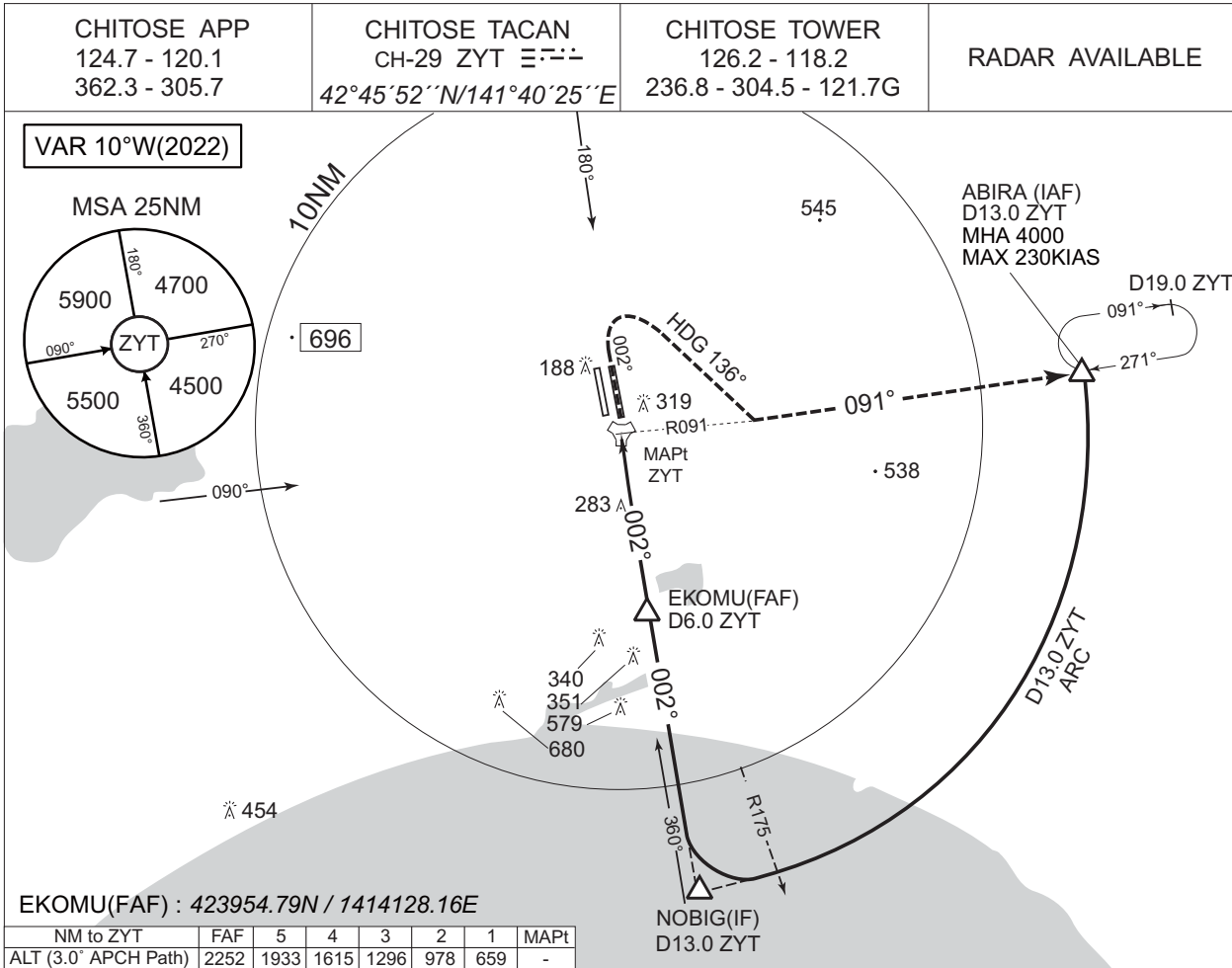


INSTRUMENT APPROACH CHART

RJCJ / CHITOSE

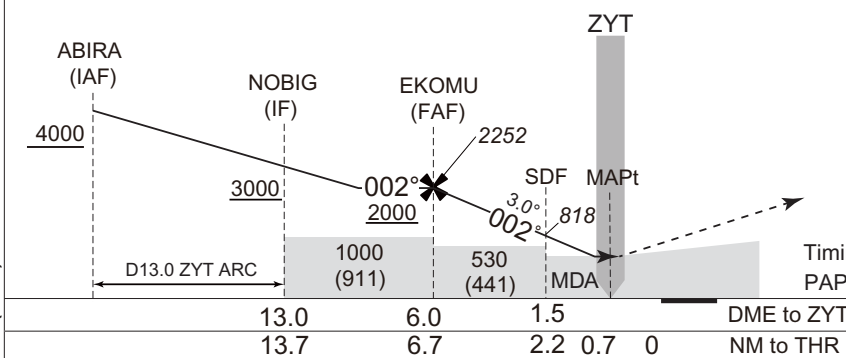
TACAN Y RWY 36R



MISSED APPROACH

Climb to 600FT via ZYT R002, turn right HDG 136° to intercept and proceed via ZYT R091 to ABIRA and hold at 4000FT. Contact CHITOSE APP.

Timing not authorized for defining the MAPt. PAPI and descent angles not coincident.



|        |          |              |             |          |
|--------|----------|--------------|-------------|----------|
| MINIMA |          | THR elev. 85 | AD elev. 89 |          |
| CAT    |          |              | CIRCLING    |          |
|        | MDA(H)   | RVR/CMV      | MDA(H)      | VIS      |
| A      | 450(361) | 900          | 620(531)    | 1600     |
| B      |          | 1000         |             | 660(571) |
| C      |          |              | 1400        |          |
| D      |          |              |             |          |

Circling to RWY18L ONLY.

CHANGE : SDF added. OBST added(283).